

**2021 - 2022 OKEECHOBEE COUNTY**

# **School**

## **Information Guide**

**School Starts: Tuesday, August 10, 2021**



**(863) 763-3937**

**606 North Parrott Avenue • [www.biglakeeyecare.com](http://www.biglakeeyecare.com)**

***Call now to schedule your eye appointment!***

## TABLE OF CONTENTS

◆ Superintendent of Schools Letter	4
◆ School Start & End Times	6
◆ Progress Report & Report Card Schedule	7
◆ School Supply Lists	8
◆ School Calendar - English	10
◆ School Calendar - Spanish	11
◆ Central Elementary Principal Letter	12
◆ Central Elementary Bus Schedule	13-14
◆ School Bus Safety Tips	14
◆ Everglades Elementary Principal Letter	15
◆ Everglades Elementary Bus Schedule	16-18
◆ North Elementary Principal Letter	19
◆ North Elementary Bus Schedule	20-21
◆ Seminole Elementary Principal Letter	22-23
◆ School Lunch Information	23
◆ Seminole Elementary Bus Schedule	24-25
◆ South Elementary Principal Letter	26
◆ South Elementary Bus Schedule	28-29
◆ Safety Smarts on the Bus	29
◆ Okeechobee High School Principal Letter	30-31
◆ Okeechobee Achievement Academy Principal Letter	32
◆ Okeechobee Freshman Campus Principal Letter	33
◆ Okeechobee High School/Achievement Academy/Freshman Campus Bus Schedule	34-43
◆ COVID-19 Safety Tips	41
◆ Osceola Middle School Principal Letter	44
◆ Osceola Middle School Bus Schedule	45-49
◆ Okeechobee Virtual School Principal Letter	50
◆ Yearling Middle School Principal Letter	51
◆ Yearling Middle School Bus Schedule	52-55




## 2021-2022 Open House schedule

**O**pen House for the start of the 2021-22 school year will be held on **Thursday, August 5**. In order to help parents who have children in more than one school within the district, times will be staggered.

- Elementary Schools will be open from 5-7 p.m.
- Middle Schools will be open from 6-8 p.m.
- Okeechobee Achievement Academy will be open from 6-8 p.m.
- Okeechobee Freshman Campus will be open Thursday from 7-9 p.m.
  - Sophomore Open House will be Wednesday, August 4 from 6-8 p.m.

The 2021-22 school year will begin on **Tuesday, August 10**.

Masks and COVID-19 vaccinations are voluntary for the 2021-22 school year. If you do not attend Open House, student schedules will be available on Skyward Family Access.



2021 - 2022 OKEECHOBEE COUNTY

# School

**INFORMATION GUIDE**

**To Reach Us**  
**Address:** Lake Okeechobee News/ Independent Newsmedia, Inc  
 313 NW 4<sup>th</sup> Ave  
 Okeechobee, FL 34972  
**Website:** southcentralfloridalife.com  
**Phone:** (863) 763-3134  
**Email:** okeenews@iniusa.org

**To Place a Display Ad**  
**Phone:** (863) 763-3134  
**Email:** okeeadsales@iniusa.org

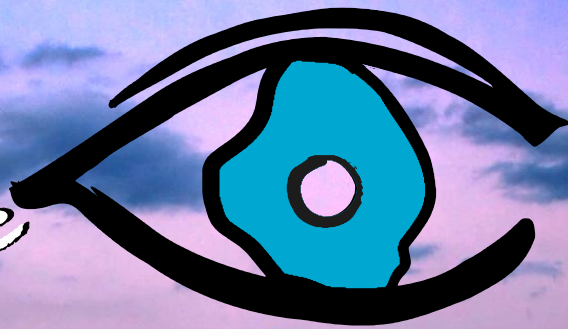
**Billing Department**  
**Email:** billteam@newszap.com

**Staff**  
**Editor-in-Chief:** Katrina Elsen  
**Advertising Manager:** Jaime Limoges  
**Circulation Manager:** Jerry Hayden  
**Design Manager:** Kris Schwartz  
**Advertising Staff:** Jennifer Klerk de Reus, Stephanie Larson, Kay Sheedy

**About Okeechobee County School Information Guide**  
 Okeechobee County School Information Guide publishes annually in August and provides parents and students with valuable information for the upcoming school year. The majority of the information is provided by the Okeechobee County School District



# Big Lake *Eye Care*



Board Certified Optometrist • Call Now For An Appointment • Walk-ins Welcome

**Dr. Charles W. Bartels**  
Board Certified Optometric Physician  
**(863) 763-3937**

PRESENT THIS BOOKLET AND RECEIVE  
**\$25** toward any  
purchase or exam

May be used by multiple family members at time of visit.  
Must be presented at time of visit. Use of one Gift Certificate per person.



- Comprehensive Eye Exams
- Contact Lens Fitting
- Variety of Colored Contacts
- State of the Art Optical Service
- Glaucoma Exams & Treatment
- Diabetic Eye Exams
- Cataract Evaluations
- Foreign Body Removal
- Tests & Treatments for Dry Eye

We Accept & Bill Most Major Insurance, Medicaid, Medicare & BCBS Healthy Kids

606 N. Parrott Ave - Okeechobee - 863-763-3937 - Visit: [www.biglakeeyecare.com](http://www.biglakeeyecare.com)





## During unprecedented times, all of us had to conquer something

**“F**orward ever be our watchword, conquer and prevail.” Many of you recognize these words as a part of Okeechobee High School’s Alma Mater. No truer words have represented our work, our resiliency, and our tenacity for the past two years. During unprecedented times, all of us have had to conquer something, and thank goodness we have prevailed. The heroic efforts of our students, parents, staff, and teachers in conquering hardships with COVID, Option 2 (thank goodness that expired), temperature checks, masks, mass feeding, social distancing, exclusions, and quarantines demonstrate that by working together we can accomplish almost anything.

Looking forward, we welcome a new school year that reflects the traditional start we have experienced in the past. New this year, the Florida Legislature mandates all students in grades ninth and eleventh learn first aid including CPR and use of an AED, requires all schools to participate in a moment of silence, demands an emergency 911-notification system accessible to all employees,

and thankfully, after six years, funded our quest to rebuild Okeechobee High School. We cannot thank our Legislators enough, especially our local delegation, Senator Ben Albritton and Representative Kaylee Tuck, for supporting this new venture. Like you, I can’t wait!

Thanks to Dr. Pat McCoy and her staff recruits, summer school attracted all time record student numbers. This is the first of many steps we are taking to address the loss of learning we experienced over the past two years. We are transitioning to the BEST standards, adopting new instructional materials, creating a new vision for effective instruction and focusing on teaching and addressing the missed standards due to interruptions.

We eagerly await open house and look forward to seeing all our students on the first day of school. Bus drivers are ready to run routes, food services staff are prepared to serve meals and support staff and administrators are delighted to welcome students. It is refreshing to start a new school year after custodians and maintenance crews have scoured each

campus, teachers have studied new curriculum and techniques to implement, and we have hired new talent from within and into our community. What a venture it will be.

If you have not done so already, be thinking about immunization records, bus schedules, and school registration if entering for the first time, changing schools or coming back from virtual. Avoid waiting until open house or even the first day of school to address these situations to create a smooth opening.

Partnerships between schools and families were reinforced during COVID. Let’s build on that work and admiration this school year and make it the best ever.

Sincerely,

**Ken Kenworthy**

Superintendent of Schools





**OKEECHOBEE**  
**VALUE SPECS**  
— South Parrott Eye Care Services —



**Later Hours 5 Days A Week!**  
**Monday - Friday**  
**9am - 6pm**

**Schedule An Appointment**  
**Online At**  
**[okeechobeevaluespecs.com](http://okeechobeevaluespecs.com)**

**2 Pairs Of Glasses**  
**for \$79**  
RESTRICTIONS APPLY

- Comprehensive Eye Exams -
- Contact Lens Fitting -
- Glaucoma Exams & Treatment -
- Diabetic Eye Exams -

**Most Insurances Accepted**

**1611 South Parrott Ave - Okeechobee, Florida - 863.357.2250**





# Okeechobee County Schools 2021-2022 Start & End Times

Regular school day - start and end times		
	Start Time	End Time
Okeechobee High School	7:05 a.m.	2:10 p.m.
Freshman Campus	7:18 a.m.	1:47 p.m.
Okeechobee Achievement Academy (middle/high)	7:20 a.m.	1:50 p.m.
Pre-K (located at OAA)	9:00 a.m.	2:30 p.m.
Middle Schools (Osceola & Yearling)	9:00 a.m.	3:40 p.m.
Seminole Elementary	8:00 a.m.	3:18 p.m.
Central, Everglades, North, South Elementary & OAA elementary	8:10 a.m.	2:50 p.m.
Pre-K ( located at South)	9:00 a.m.	2:50 p.m.

Early Release Dates for 2021-2022 school year	
Friday, September 10	Friday, February 4
Friday, November 19	Friday, April 22
Friday, December 17	Thursday, May 26

Early Release Day - start and end times		
	Start Time	End Time
Okeechobee High School	7:05 a.m.	10:50 a.m.
Freshman Campus	7:18 a.m.	10:30 a.m.
Okeechobee Achievement Academy (middle/high)	7:20 a.m.	10:30 a.m.
Pre-K (located at OAA)	9:00 a.m.	11:15 a.m.
Middle Schools (Osceola & Yearling)	9:00 a.m.	12:20 p.m.
Seminole Elementary	8:00 a.m.	11:58 a.m.
Central, Everglades, North, South Elementary & OAA elementary	8:10 a.m.	11:30 a.m.
Pre-K (located at SES)	9:00a.m.	11:30 a.m.





# 2021-2022 Progress Report & Report Card Schedule

## First Nine-Weeks

**Thursday, September 9**  
Send Progress Reports Home

**Thursday, October 7**  
Last day of Nine-Week  
Grading Period

**Monday, October 11**  
Direct Entry completed  
by 9:00 a.m.

**Tuesday, October 12**  
Print Report Cards at  
school site

**Thursday, October, 14**  
Report Card Day  
(All Schools)

## Second Nine-Weeks

**Tuesday, November 9**  
Send Progress Reports Home

**Friday, December 17**  
Last Day of Nine-Week  
Grading Period

**Tuesday, January 4**  
Direct Entry completed  
by 9:00 a.m.

**Wednesday, January 5**  
Print Report Cards at  
school site

**Thursday, January 6**  
Report Card Day  
(All Schools)

## Third Nine-Weeks

**Thursday, February 3**  
Send Progress Reports Home

**Friday, March 11**  
Last Day of Nine-Week  
Grading Period

**Tuesday, March 22**  
Direct Entry completed  
by 9:00 a.m.

**Wednesday, March 23**  
Print Report Cards at  
school site

**Thursday, March 24**  
Report Card Day  
(All Schools)

## Fourth Nine-Weeks

**Thursday, April 21**  
Send Progress Reports Home

**Thursday, May 26**  
Last Day of Nine-Week  
Grading Period

**Friday, May 27**  
Print Verifications by Noon  
Direct Entry completed by  
5:00 p.m.

**Tuesday, June 14**  
Report Cards Printed at  
school site

**Tuesday, June 21**  
Report Cards Mailed/  
Available for Pick-Up at  
School (Elementary)

**Friday, June 24**  
Report Cards (Middle  
Schools, OFC and OHS)

**YOUR SMILE  
SAYS IT ALL**

We've been creating  
beautiful smiles in  
Okeechobee for over  
35 years. Isn't it time  
to see what we can do  
for you?




**Family Orthodontics**

Making a difference one smile at a time

**2025 Hwy 441 North**  
**863.467.2332**



*Legacy*  
Real Estate of Florida

Wishing Our  
★ Students & Teachers a ★  
**SAFE & SUCCESSFUL  
SCHOOL YEAR**

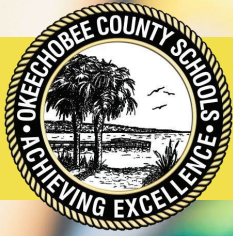


**Lasha Boree, Broker**

View our listings online at [legacyrealtyfl.com](http://legacyrealtyfl.com)

Office: 863-484-8588 • 101 SW 3rd Ave. • Okeechobee





# Okeechobee County 2021-22 School Supplies Lists

## Pre-Kindergarten Essentials

- ☐ Glue Sticks
- ☐ Watercolor Markers
- ☐ Vinyl Folders\* (3 prong w/pocket)
- ☐ Crayons
- ☐ Highlighters
- ☐ Lanyard
- ☐ Rest Mat
- ☐ Blanket or Towel for Rest Time
- ☐ Complete Change of Clothes
- ☐ Personal Water Bottle
- ☐ Face Mask **OPTIONAL**

## Kindergarten & First Grade Essentials

- ☐ Glue Sticks
- ☐ White Glue
- ☐ Vinyl Folders\* (3 prong w/pocket)
- ☐ Scissors
- ☐ Plastic Supply Box (Kindergarten)
- ☐ Crayons
- ☐ #2 Pencils
- ☐ Erasers
- ☐ Highlighters
- ☐ 1st Grade Writing Tablet (1st Grade)
- ☐ Zippered Pencil Pouch (1st Grade)
- ☐ Personal Water Bottle
- ☐ Face Mask **OPTIONAL**

## Optional

- ☐ Backpack\* – No Wheels
- ☐ Three Ring Binder
- ☐ Composition Book
- ☐ Earbuds/Headphones
- ☐ Dry Erase Markers

## Second & Third Grade Essentials

- ☐ Glue Sticks
- ☐ Vinyl Folders\* (3 prong w/pocket)
- ☐ Scissors
- ☐ Zippered Pencil Pouch
- ☐ Crayons
- ☐ Colored Pencils
- ☐ #2 Pencils
- ☐ Erasers
- ☐ Wide-ruled Notebook Paper
- ☐ Highlighters
- ☐ Personal Water Bottle
- ☐ Face Mask **OPTIONAL**

## Fourth & Fifth Grade Essentials

- ☐ Glue Sticks
- ☐ Vinyl Folders\* (3 prong w/pocket)
- ☐ Scissors
- ☐ Zippered Pencil Pouch
- ☐ Crayons
- ☐ Colored Pencils
- ☐ #2 Pencils
- ☐ Erasers
- ☐ Wide-ruled Notebook Paper
- ☐ Highlighters
- ☐ Ruler with Inches & Centimeters
- ☐ Personal Water Bottle
- ☐ Face Mask **OPTIONAL**

## Optional for All Classrooms

- ☐ Tissues
- ☐ Zip-top Bags (elementary schools)
- ☐ Hand Sanitizer\*\*
- ☐ Disinfectant Wipes\*\*

## Middle School Grades 6-8 Essentials

- ☐ Earbuds/Headphones
- ☐ Glue Sticks
- ☐ Scissors
- ☐ #2 Pencils
- ☐ Colored Pencils
- ☐ Erasers

- ☐ Loose Leaf Notebook Paper
- ☐ Single Subject Spiral Notebooks (4)
- ☐ 1-3 Subject Spiral Notebooks
- ☐ Sticky Notes (pack of 100)
- ☐ Highlighters
- ☐ Index Cards (3x5, lined, packed of 100)
- ☐ Dry Erase Markers
- ☐ Page Protectors
- ☐ Binder Clips (medium)
- ☐ Personal Water Bottle
- ☐ Face Mask **OPTIONAL**

## Middle School Subject Specific

- Algebra I & Geometry:
  - ☐ Calculator: TI-30 XA
  - ☐ 1-3 Subject Spiral Notebook
- Band:
  - ☐ Three Ring Binder (1 inch)

## High School Grades 9-12 Essentials

- ☐ Earbuds/Headphones
- ☐ Glue Sticks/Tape
- ☐ Scissors
- ☐ #2 Pencils
- ☐ Colored Pencils
- ☐ Zippered Pencil Pouch
- ☐ Loose Leaf Notebook Paper
- ☐ Blue and/or Black Pens
- ☐ Single Subject Spiral Notebooks (1 per subject, per grading period)
- Exceptions below ❖
- ☐ Highlighters
- ☐ Index Cards (3x5, lined, packed of 100)
- ☐ Personal Water Bottle
- ☐ Face Mask **OPTIONAL**

## High School Subject Specific

- Calculators:
  - ☐ Algebra I & Geometry: TI-30 XA
  - ☐ AP Chemistry, AP Environmental Science, AP Calculus: TI-84
- ❖ Five Subject Spiral Notebooks
  - ☐ All Science Courses
  - ☐ Pre AP English I
  - ☐ Geometry
  - ☐ Algebra 2
- Graph Paper:
  - ☐ Chemistry
  - ☐ AP Chemistry
  - ☐ Physics
- Composition Notebook:
  - ☐ Chemistry
  - ☐ Physics
- Art:
  - ☐ 9" x 12" Spiral Sketchbook

\* Please consider vinyl, plastic or poly folders and backpacks so they can be sanitized

\*\* Every classroom would appreciate additional COVID-19 supplies

**These are all generic lists. Your child's teacher may have a more personalized list.**



**CRS** Cooling Refrigeration  
SERVICES Heating & A/C Service  
863.467.4733

**17 Years**  
2004-2021

24 hour emergency service  
Residential [www.crsokee.com](http://www.crsokee.com) Commercial

**ELI'S WESTERN WEAR**  
ANNUAL BACK TO SCHOOL SALE!  
JULY 31ST - AUGUST 9TH 2021

**TAX FREE! DAILY DRAWINGS!**

**25% OFF** ALL SHIRTS (EXCLUDING WRANGLER WORK SHIRTS), JACKETS, BOOTS, SHOES, CAPS, PURSES, BACKPACKS, WALLET, BELTS, AND SOCKS!

**15%-25% OFF** ALL JEANS, SHORTS, AND WRANGLER WORKSHIRTS

**CLEARANCE RACKS UP TO 50% OFF!**

**SALE EXCLUDES : ALREADY MARKED DOWN ITEMS, SADDLES, TACK, ROPES, JEWELRY, FELT & STRAW HATS, YETI, AND ALL ACCESSORIES.**

**SHOP IN STORE OR ONLINE!**

**ARCADIA** 1011 E OAK ST.  
**OKEECHOBEE** 907 NW PARK ST  
**DUNDEE** 27995 HWY 27

[WWW.ELISWESTERNWEAR.COM](http://WWW.ELISWESTERNWEAR.COM)

**C21** Opening Doors is What We Do  
**Hazellief & Prevatt Realty**  
(863) 763-2104 • Se Habla Español

**Residential ♦ Agriculture ♦ Commercial**

With school back in session soon, be aware of and watch out for children near schools, bus stops, and sidewalks.  
**ALWAYS** stop for the school buses!

**David Hazellief**, Broker  
(863) 610-1553

**Sharon Prevatt**, Realtor  
(863) 634-7069

**Mark Goodbread**, Realtor  
(863) 634-6999

**Lucy Olivarez**  
Office Manager

**Carmen Guerrero**  
Customer Service

**1200 South Parrott Ave.**  
**century21okeechobee.com**  
**admin@c21okee.com**

**GLADES**  
*Electric Cooperative, Inc.*  
"Neighbors Working for Neighbors"

**Knowledge is POWER!**

**All the best to teachers and students this school year!**

**LIKE US ON facebook**

Learn with us year-round about programs, services, energy tips and more

[WWW.FACEBOOK.COM/GLADESELECTRICCOOPERATIVE](http://WWW.FACEBOOK.COM/GLADESELECTRICCOOPERATIVE)  
[www.GladesElectric.com](http://www.GladesElectric.com) 863.946.6200

# 2021-2022 Okeechobee County School Board Instructional Calendar



## September 2021

S	M	T	W	T	F	S	S	M	T	W	T	F	S
				1	2	3	1	2	3	4			
4	5	6	7	8	9	10	5	6	7	8	9	10	11
11	12	13	14	15	16	17	12	13	14	15	16	17	18
18	19	20	21	22	23	24	19	20	21	22	23	24	25
25	26	27	28	29	30	31	26	27	28	29	30		

Fri New Teachers Report

Tues Returning Teachers Report  
Open House

Tues **Students' First Day**

Mon Holiday—Labor Day

Fri Early Release Day for Students

Mon Teacher Prof. Dev. Day (No Students)

Mon End 1st Nine Weeks (41 Days)

Thu Teacher Plan Day (No Students)

Fri October 7

October 8

November 19

November 22

November 23

November 24

November 25

November 26

December 17

December 17

December 17

December 17

December 17

December 17

December 17

December 17

December 17

December 17

December 17

December 17

December 17

December 17

December 17

December 17

December 17

December 17

December 17

December 17

December 17

December 17

December 17

December 17

December 17

December 17

December 17

December 17

December 17

December 17

December 17

December 17

December 17

December 17

December 17

December 17

December 17

December 17

December 17

December 17

December 17

December 17

December 17

December 17

December 17

December 17

December 17

December 17

December 17

December 17

December 17

## August 2021

S	M	T	W	T	F	S	S	M	T	W	T	F	S
							1	2	3	4	5	6	7
8	9	10	11	12	13	14	8	9	10	11	12	13	14
15	16	17	18	19	20	21	15	16	17	18	19	20	21
22	23	24	25	26	27	28	22	23	24	25	26	27	28
29	30	31					29	30	31				

July 30

August 3

August 5

August 10

September 6

September 10

September 13

October 7

October 8

November 19

November 22

November 23

November 24

November 25

November 26

December 17

December 17

December 17

December 17

December 17

December 17

December 17

December 17

December 17

December 17

December 17

December 17

December 17

December 17

December 17

December 17

December 17

December 17

December 17

December 17

December 17

December 17

December 17

December 17

December 17

December 17

December 17

December 17

December 17

December 17

December 17

December 17

December 17

December 17

December 17

December 17

December 17

December 17

December 17

December 17

December 17

December 17

December 17

December 17

December 17

December 17

December 17

December 17

December 17

December 17

December 17

December 17

December 17

December 17

December 17

## July 2021

S	M	T	W	T	F	S	S	M	T	W	T	F	S
							1	2	3				
4	5	6	7	8	9	10	8	9	10	11	12	13	14
11	12	13	14	15	16	17	15	16	17	18	19	20	21
18	19	20	21	22	23	24	22	23	24	25	26	27	28
25	26	27	28	29	30	31	29	30	31				

July 30

August 3

August 5

August 10

September 6

September 10

September 13

October 7

October 8

November 19

November 22

November 23

November 24

November 25

November 26

December 17

December 17

December 17

December 17

December 17

December 17

December 17

December 17

December 17

December 17

December 17

December 17

December 17

December 17

December 17

December 17

December 17

December 17

December 17

December 17

December 17

December 17

December 17

December 17

December 17

December 17

December 17

December 17

December 17

December 17

December 17

December 17

December 17

December 17

December 17

December 17

December 17

December 17

December 17

December 17

December 17

December 17

December 17

December 17

December 17

December 17

December 17

December 17

December 17

December 17

December 17

December 17

December 17

December 17

December 17

## December 2021

S	M	T	W	T	F	S	S	M	T	W	T	F	S
							1	2	3	4			
5	6	7	8	9	10	11	5	6	7	8	9	10	11
12	13	14	15	16	17	18	12	13	14	15	16	17	18
19	20	21	22	23	24	25	19	20	21	22	23	24	25
26	27	28	29	30	31		26	27	28	29	30	31	

## November 2021








S	M	T	W	T	F	S	S	M	T	W	T	F	S
							1	2	3	4	5	6	
7	8	9	10	11	12	13	7	8	9	10	11	12	13
14	15	16	17	18	19	20	14	15	16	17	18	19	20
21	22	23	24	25	26	27	21	22	23	24	25	26	27
28	29	30					28	29	30				

## October 2021

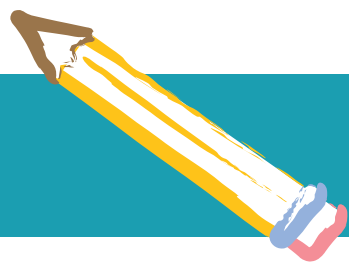
S	M	T	W	T	F	S	S	M	T	W	T	F	S
							1	2					
3	4	5	6	7	8	9	3	4	5	6	7	8	9
10	11	12	13	14	15	16	10	11	12	13	14	15	16
17	18	19	20	21	22	23	17	18	19	20	21	22	23
24/31	25	26	27	28	29	30	24/31	25	26	27	28	29	30



Escuelas estén cerradas por un huracán u otra emergencia este día

	Días de clases		Reportes de Progreso
	Día de Plan		Reportes de Calificaciones
			Estudiantes salen temprano
			Día de Huracán

Los maestros



# Central Elementary strives to put students first

**W**elcome to the 2021-2022 school year at Central Elementary School, Home of the Panthers! I hope you have enjoyed your summer. We look forward to kicking off a new school year of learning together. Thank you so much for choosing Central Elementary to educate your children.

We will strive to continue our pledge of putting students first and we continue to commit to raise a strong culture of successful life-long learners, through the building of strong relationships. We will focus on safety, student achievement through rigorous and data driven instruction, character education, social-emotional well-being, and building a culture of reading in a diversity rich learning environment. We believe that all students are empowered to achieve success when immersed in a powerful learning community that values a diverse student body and is centered on core values, as well as a shared commitment to achieving academic excellence. It is our belief that as we focus on our mission and vision for our students, our school will excel!

**FIRST DAY OF SCHOOL:** August 10th

**SCHOOL HOURS:** Classes officially begin at 8:10 a.m. with adult supervision and drop off beginning at 7:30 a.m. Any student dropped off after 8:10 a.m. must be accompanied, into the office, by an adult to be signed in. Students will be dismissed at 2:50 p.m. and adult

supervision ends at 3:15 p.m.

**ATTENDANCE/TARDIES/CHECK-OUTS:** To the extent possible, we ask that students arrive on time and attend school everyday, all day. Not only do we not want students to miss valuable instructional time, but it can also interrupt the instructional time of others. We ask that you try to schedule appointments for your child after school. In the event that you need to checkout your child prior to the end of the day, please do so no later than 2:30 p.m. Students will only be released to parents in the pick-up line. After 3:15 p.m. students may be picked up from the office front gate.

**MEALS:** Breakfast and lunch will be provided at no cost to all students.

**OPEN HOUSE:** Our first family event will be OPEN HOUSE on August 5th. Watch our Facebook account for more details at: [facebook.com/CentralElementaryOkee](https://facebook.com/CentralElementaryOkee). This will be a wonderful opportunity for you and your child to meet your child's teacher and take a tour of the school. This is a great time for children to become acquainted with their teacher and their school. School t-shirts will be available for purchase, as well as yearbooks. Parents of Kindergarten students may walk their child to the door only, the morning of August 10th.

**AGENDAS:** All students will be provided with a school agenda which contains our Student Handbook in the front. We ask that you and your child sign the Compact at the end

of the Student Handbook as we all agree together to value education and do our part.

**VISITORS/ACCESS:** We hope to slowly increase family events as the year progresses, such as Open House, Award Programs, and other Family Engagement Events. Campus access will continue to be limited, but we will gladly take your call in the office to set up a phone conference or Zoom Meeting with your teacher(s) should you need assistance.

**PARENT & FAMILY ENGAGEMENT:** During Open House, you will have the opportunity to learn more about AND join our School Advisory Council (SAC), Parent Teacher Organization (PTO), and Panther Partners. These organizations are opportunities for stakeholders to give input regarding our school budget, school improvement initiatives, fundraisers, school activities and student

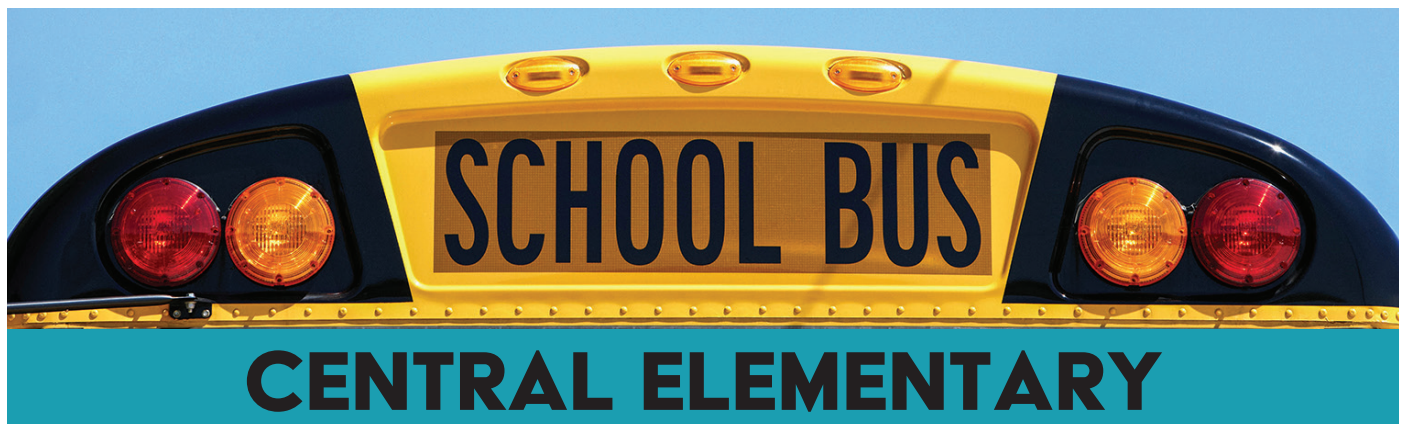
incentives. Throughout the year, workshops will be provided to help families support academics both at school and home.

I look forward to working with you as we help each child at Central Elementary meet their goals and have a successful school year! Enjoy the remainder of your summer and I will see you soon!

GO  
PANTHERS!  
**Cynthia  
Kubit**  
Principal,  
Central  
Elementary  
School







## BUS SCHEDULE

### 02 CES AM

TIME	LOCATION
7:14 am	NW 6th St & NW 3rd Ave
7:16 am	NW 5th Ave & Box 209
7:17 am	NW 10th Ave & NW 3rd St
7:18 am	NW 10th Ave & NW 5th St
7:19 am	NW 11th Ave & NW 7th St
7:20 am	NW 18th Ave & NW 5th St
7:21 am	NW 11th Ave & NW 3rd St

### 02 CES PM

TIME	LOCATION
2:58 pm	NW 11th Ave & NW 3rd St
2:59 pm	NW 18th Ave & NW 5th St
3:00 pm	NW 11th Ave & NW 7th St
3:01 pm	NW 10th Ave & NW 5th St
3:02 pm	NW 10th Ave & NW 3rd St
3:04 pm	NW 5th Ave & Box 209
3:05 pm	NW 6th St & NW 3rd Ave

### 05 CES AM

TIME	LOCATION
7:14 am	SE 4th Ave & SE 5th St
7:16 am	SE 2nd St & SE 5th Ave
7:22 am	SE 8th Dr & SE 3rd St
7:24 am	SE 8TH DR & SE 4TH ST
7:27 am	SE 8 Ave & SE 6th Ct
7:29 am	SE 8th Ave & SE 10th St
7:31 am	SE 8th Dr & SE 12 St
7:32 am	SE 8th Dr & SE 14th St
7:38 am	SE 9th Ave & SE 21 St
7:43 am	SE 10th St & SE 9th Ave
7:45 am	SE 9th Ave & SE 8th St

### 05 CES PM

TIME	LOCATION
2:57 pm	SE 4th Ave & SE 5th St
2:58 pm	SE 2nd St & SE 5th Ave
3:00 pm	SE 8th Dr & SE 3rd St
3:02 pm	SE 8TH DR & SE 4TH ST
3:03 pm	SE 8 Ave & SE 6th Ct
3:04 pm	SE 8th Ave & SE 10th St
3:05 pm	SE 8th Dr & SE 12 St
3:06 pm	SE 8th Dr & SE 14th St
3:08 pm	SE 9th Ave & SE 21 St
3:11 pm	SE 10th St & SE 9th Ave
3:14 pm	SE 9th Ave & SE 8th St

### 12 CES AM

TIME	LOCATION
7:40 am	NW 28th Ave & NW 3rd St
7:42 am	NW 28th Ave & NW 1st St
7:46 am	NW 32nd Ave & NW 1st St
7:48 am	NW 32nd Ave & NW 3rd St
7:49 am	NW 4th St & NW 34th Ter
7:50 am	NW 36th Ter & NW 6th St

### 12 CES PM

TIME	LOCATION
2:59 pm	NW 32nd Ave & NW 1st St
3:00 pm	NW 32nd Ave & NW 3rd St
3:00 pm	NW 4th St & NW 34th Ter
3:01 pm	NW 36th Ter & NW 6th St
3:04 pm	NW 28th Ave & NW 1st St
3:05 pm	NW 28th Ave & NW 3rd St

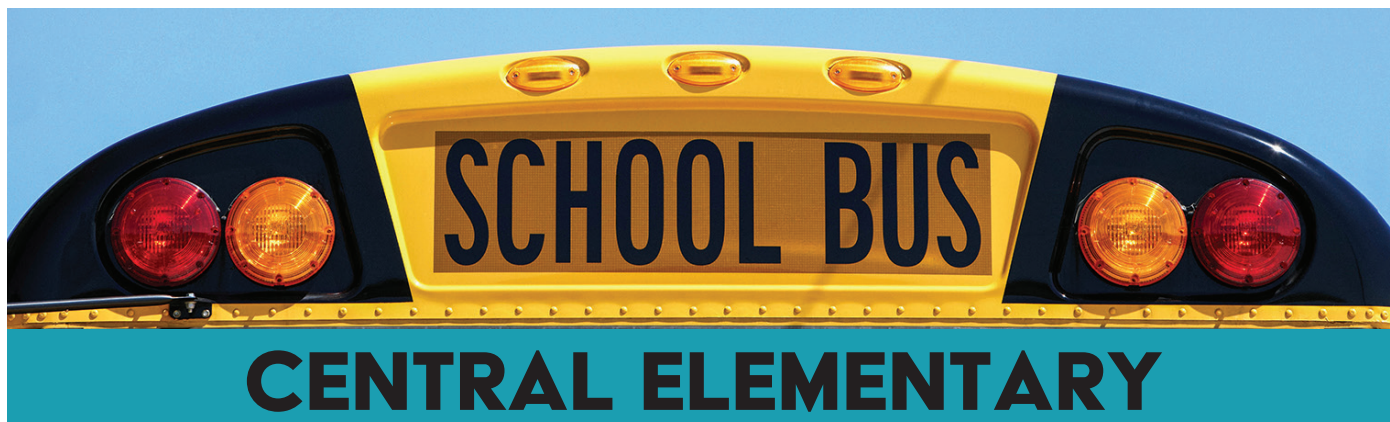
### 27 CES AM

TIME	LOCATION
7:18 am	70 W & Box 1659
7:22 am	NW 26th Ave & NW 8th St
7:23 am	NW 26th Ave & NW 5th St
7:25 am	NW 22nd Ave & NW 4th St
7:30 am	SW 8th St & SW 20th Ave
7:32 am	SW 8th St & SW 13th Ave
7:34 am	SW 11th Ave & SW 11th St
7:37 am	SW 9th St & SW 10th Ave

### 27 CES AM

TIME	LOCATION
2:57 pm	SW 9th St & SW 10th Ave
2:58 pm	SW 11th Ave & SW 11th St
2:59 pm	SW 8th St & SW 13th Ave
3:00 pm	SW 8th St & SW 20th Ave
3:03 pm	70 W & Box 1659
3:04 pm	NW 22nd Ave & NW 4th St
3:05 pm	NW 26th Ave & NW 5th St
3:06 pm	NW 26th Ave & NW 8th St





## BUS SCHEDULE

### 40 CES AM

TIME	LOCATION
7:32 am	SE 16th Ave & SE 6th Ln
7:34 am	SE 14th Ave & SE 8th St
7:35 am	SE 13th Ave & SE 4th St
7:43 am	NE 14th Ave & NE 10th St
7:46 am	70 E & River Run
7:48 am	NE 6th St & NE 4th Ave

### 40 CES PM

TIME	LOCATION
3:00 pm	SE 13th Ave & SE 4th St
3:01 pm	SE 14th Ave & SE 8th St
3:02 pm	SE 16th Ave & SE 6th Ln
3:06 pm	NE 14th Ave & NE 10th St
3:09 pm	70 E & River Run
3:11 pm	NE 6th St & NE 4th Ave

### 56 CES AM

TIME	LOCATION
7:02 am	SE 10th Ave & SE 5th St
7:03 am	SE 10th Ave & J&W
7:10 am	SW 3rd Ave & SW 13th St
7:11 am	SW 2nd Ave & SW 11th St
7:17 am	SW 10th Dr & SW 14th St
7:28 am	SW 11th Ave & SW 3rd St
7:31 am	SW 2nd St & SW 9th Ave

### 56 CES PM

TIME	LOCATION
2:52 pm	SW 2nd St & SW 9th Ave
2:54 pm	SW 11th Ave & SW 3rd St
2:57 pm	SW 10th Dr & SW 14th St
3:08 pm	SW 2nd Ave & SW 11th St
3:09 pm	SW 3rd Ave & SW 13th St
3:14 pm	SE 10th Ave & J&W
3:14 pm	SE 10th Ave & SE 5th St

## School Bus Safety Tips

- Stand on the sidewalk while waiting for the school bus, staying at least two giant steps away from the curb or road.
- Wait until the bus comes to a complete stop and the driver says it is okay to board before stepping on the bus. Remember to hold the handrail when getting on and off the school bus!



- Never push or shove while getting on the bus or waiting at the bus stop.
- Stay quietly in your seat while riding the bus, and never stick your hands, feet or any part of your body outside of the bus window.
- Never cross the street behind a school bus. Always cross at least 8 steps in front of the bus where the driver can see you.

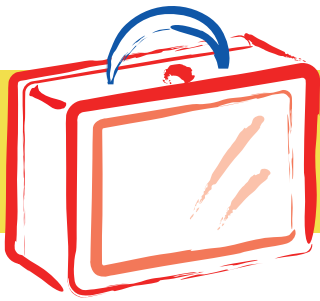


# FALL FOOTBALL **PREVIEW**

## REGIONAL HIGH SCHOOL FOOTBALL KICK-OFF

LOOK FOR IT IN THE 8/25 LAKE OKEECHOBEE NEWS OR ONLINE AT [SOUTHCENTRALFLORIDALIFE.COM/SPECIALSECTIONS](https://southcentralfloridalife.com/specialsections)





## Everglades Elementary School welcomes students

**W**elcome to Everglades Elementary School, where we are proud of our school, our students, our staff, and the outstanding community of parents who provide wonderful support to our school. It is my pleasure to extend a warm welcome to you as you begin the 2021 - 2022 school year with us.

Everglades Elementary School faculty and staff are devoted to helping children develop academically, socially, and emotionally. Our school strives to have a safe atmosphere where our children will take risks and experience success on a daily basis.

Creating a solid foundation for our future school success requires not only instruction in the basic skills, but also fostering a true love of learning in each child. Countless efforts will be made each day to inspire our children's naturally curious minds.

We are thrilled our students take an active role in their daily education, and we thank our parents and guardians for taking advantage of the web-based systems the district provides for us and supporting the educational process at home.

I'd like to welcome our new and returning faculty and staff members to Everglades Elementary School. They are extremely excited to welcome our children back to school.

We would like to extend an invitation for you to become an active member of our Parent Teacher Organization, School Advisory Council, and Parental Involvement Committee. We are happy to have you and your children with us at Everglades Elementary School.

The faculty and staff and I are all looking forward to getting to know and work with all of you to ensure that each and every student in the school

is successful this year. To that end, we ask that all students come to school on time each day with all of their required materials prepared to do their best. Success is a team effort and every player, the students, the staff, and the parents are all integral parts of that team. When every player does their best, everyone wins!

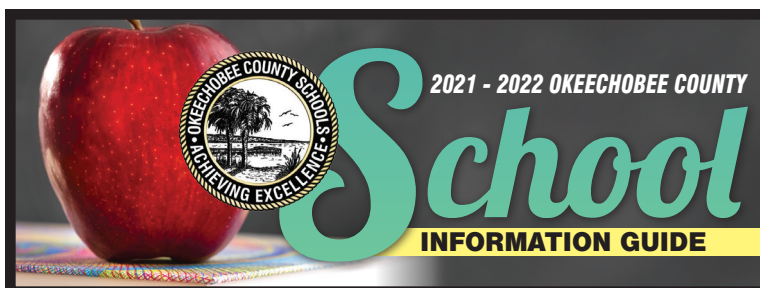
Please join us on Thursday, August 5th from 5:00 p.m. to 7:00 p.m. for Open House.

The students' first day back is Tuesday, August 10th. Let's make the 2021 - 2022 school year one of our best yet!

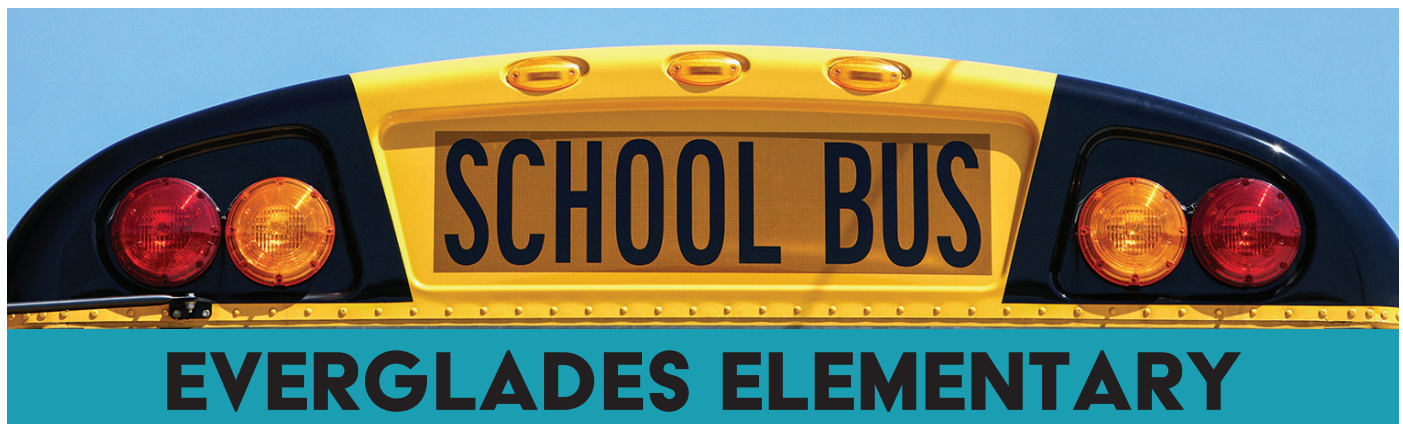
Go Gators!



Jenni Ellis  
Everglades Elementary  
School Principal



**You can also view this special section online**  
**[SouthCentralFloridaLife.com](https://SouthCentralFloridaLife.com/specialsections)**  
**/specialsections**



## BUS SCHEDULE

### 01 EES AM

<u>TIME</u>	<u>LOCATION</u>
7:10 am	SW 15th St & Box 911
7:24 am	NE 30th Ave & NE 7th Ln
7:25 am	NE 8th St & NE 31st Ter
7:26 am	NE 30th Ave & NE 11th Ln
7:27 am	NE 28th Ave & Box 1073

### 01 EES PM

<u>TIME</u>	<u>LOCATION</u>
2:59 pm	NE 30th Ave & NE 7th Ln
3:00 pm	NE 8th St & NE 31st Ter
3:01 pm	NE 30th Ave & NE 11th Ln
3:02 pm	NE 28th Ave & Box 1073
3:13 pm	SW 15th St & Box 911

### 07 EES AM

<u>TIME</u>	<u>LOCATION</u>
7:15 am	441 SE & 42ND PL
7:17 am	441 SE & Box 5350
7:19 am	441 SE & Box 6676
7:20 am	441 SE & Box 8741
7:22 am	SE 68th Way & Box 8769
7:25 am	SE 67th Dr & SE 88th Tr
7:27 am	SE 86th Blvd & SE 58th Dr
7:28 am	SE 57th Dr & SE 93rd Trl
7:29 am	SE 59th Dr & SE 91st Trl
7:31 am	SE 60th Dr & Box 9338
7:36 am	SE 57th Dr & SE 89th Ter
7:37 am	SE 57th Dr & SE 81st Cir
7:38 am	SE 57th Dr & SE 80th Trl
7:39 am	SE 59th Dr & SE 85th Ter

### 07 EES PM

<u>TIME</u>	<u>LOCATION</u>
3:05 pm	SE 57th Dr & SE 93rd Trl
3:06 pm	SE 59th Dr & SE 91st Trl
3:07 pm	SE 60th Dr & Box 9338
3:09 pm	SE 86th Blvd & SE 58th Dr
3:10 pm	SE 57th Dr & SE 89th Ter
3:12 pm	SE 57th Dr & SE 81st Cir
3:13 pm	SE 57th Dr & SE 80th Trl
3:15 pm	SE 59th Dr & SE 85th Ter
3:21 pm	SE 67th Dr & SE 88th Tr
3:22 pm	SE 68th Way & Box 8769
3:22 pm	441 SE & Box 8741
3:24 pm	441 SE & Box 6676
3:27 pm	441 SE & Box 5350
3:29 pm	441 SE & 42ND PL

### 16 EES AM

<u>TIME</u>	<u>LOCATION</u>
7:17 am	NE 8th St & NE 29th Ave
7:23 am	NE 16th Ave & NE 8th St
7:25 am	NE 16th Ave & NE 14th St

### 16 EES PM

<u>TIME</u>	<u>LOCATION</u>
3:05 pm	NE 8th St & NE 29th Ave
3:11 pm	NE 16th Ave & NE 8th St
3:12 pm	NE 16th Ave & NE 14th St

### 17 EES AM

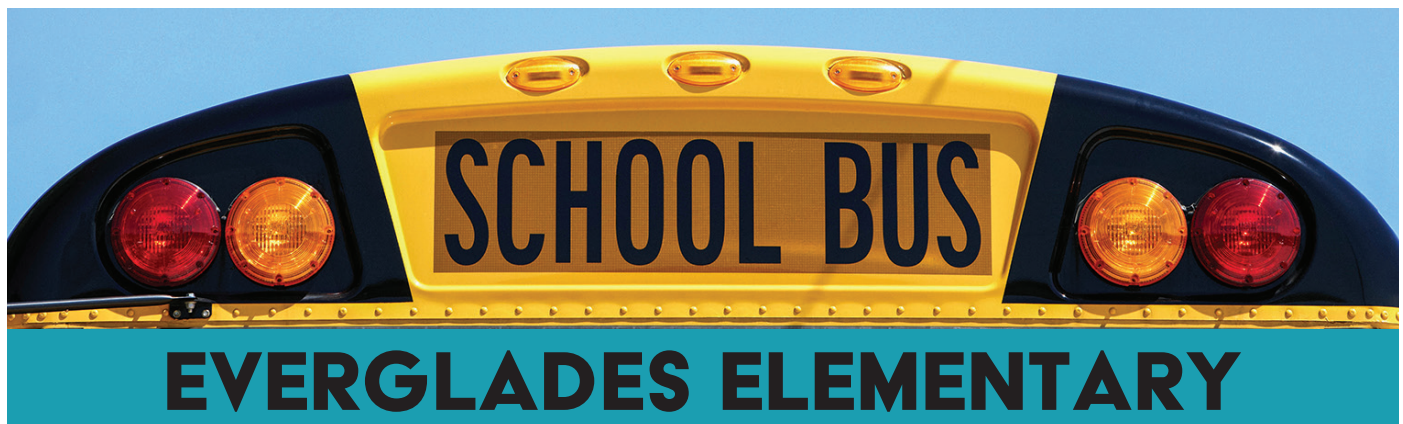
<u>TIME</u>	<u>LOCATION</u>
7:15 am	14151 441 SE
7:18 am	441 SE & Box 13151
7:24 am	441 SE & Box 12710
7:28 am	441 SE & se 118th Ter
7:31 am	441 SE & Box 11486
7:36 am	441 SE & SE 88th Blvd
7:37 am	8571 SE 86th Blvd
7:38 am	441 SE & Box 8190
7:39 am	441 SE & Box 7777
7:40 am	441 SE & Box 6500
7:43 am	441 SE & SE 50th Ave

### 17 EES PM

<u>TIME</u>	<u>LOCATION</u>
3:16 pm	441 SE & SE 50th Ave
3:20 pm	441 SE & Box 6500
3:21 pm	441 SE & Box 7777
3:21 pm	441 SE & Box 8190
3:22 pm	8571 SE 86th Blvd
3:23 pm	441 SE & SE 88th Blvd
3:26 pm	441 SE & Box 11486
3:27 pm	441 SE & se 118th Ter
3:28 pm	441 SE & Box 12710
3:29 pm	441 SE & Box 13151
3:31 pm	14151 441 SE







## BUS SCHEDULE

### 25 EES AM

<u>TIME</u>	<u>LOCATION</u>
7:18 am	441 SE & SE 33rd Ter
7:20 am	SE 38th Ave & Box 3321
7:21 am	SE 39TH AVE & Box 3031
7:22 am	SE 39th Ave & SE 29th Ct
7:24 am	SE 28th St & SE 47th Ter
7:25 am	SE 43rd Ave & SE 27th St
7:27 am	SE 26th St & Box 4046
7:31 am	SE 34th Dr & SE 20th Ct
7:32 am	SE 34th Dr & SE 23rd St
7:35 am	SE 40th Ave & SE 22nd Ct

### 25 EES PM

<u>TIME</u>	<u>LOCATION</u>
2:59 pm	SE 40th Ave & SE 22nd Ct
3:03 pm	SE 34th Dr & SE 20th Ct
3:04 pm	SE 34th Dr & SE 23rd St
3:06 pm	SE 26th St & Box 4046
3:07 pm	SE 43rd Ave & SE 27th St
3:08 pm	SE 28th St & SE 47th Ter
3:10 pm	SE 39th Ave & SE 29th Ct
3:11 pm	SE 39TH AVE & Box 3031
3:12 pm	SE 38th Ave & Box 3321
3:13 pm	441 SE & SE 33rd Ter

### 28 EES AM

<u>TIME</u>	<u>LOCATION</u>
7:10 am	NE 62nd Ave & NE 4th St
7:11 am	NE 62nd Ave & NE 7th St
7:13 am	NE 62nd Ave & Box 895
7:15 am	NE 64th Ave & NE 7th St
7:16 am	NE 64th Ave & NE 4th St
7:17 am	NE 64th Ave & NE 2nd St
7:21 am	SE 68th Ave & Box 181
7:24 am	NE 1st St & Box 6668
7:25 am	NE 1st St & NE 70th Ave
7:27 am	NE 70th Ave & NE 4th St
7:28 am	NE 70th Ave & NE 7th St

### 28 EES PM

<u>TIME</u>	<u>LOCATION</u>
3:10 pm	NE 62nd Ave & NE 4th St
3:11 pm	NE 62nd Ave & NE 7th St
3:12 pm	NE 62nd Ave & Box 895
3:13 pm	NE 64th Ave & NE 7th St
3:15 pm	NE 64th Ave & NE 4th St
3:15 pm	NE 64th Ave & NE 2nd St
3:19 pm	SE 68th Ave & Box 181
3:22 pm	NE 1st St & Box 6668
3:23 pm	NE 1st St & NE 70th Ave
3:25 pm	NE 70th Ave & NE 4th St
3:26 pm	NE 70th Ave & NE 7th St

### 31 EES AM

<u>TIME</u>	<u>LOCATION</u>
7:10 am	NE 96th Ave & Box 2396
7:13 am	NE 7th St & Box 9775
7:15 am	NE 101st Ave & Box 1155
7:23 am	NE 103rd Ave & NE 28th Ln
7:24 am	NE 103rd Ave & NE 23rd Ln
7:26 am	NE 103rd Ave & NE 19th St
7:28 am	NE 103rd Ave & NE 11th Ct
7:30 am	NE 104th Ct & Box 896
7:32 am	NE 103rd Ave & NE 106th Ct

### 31 EES PM

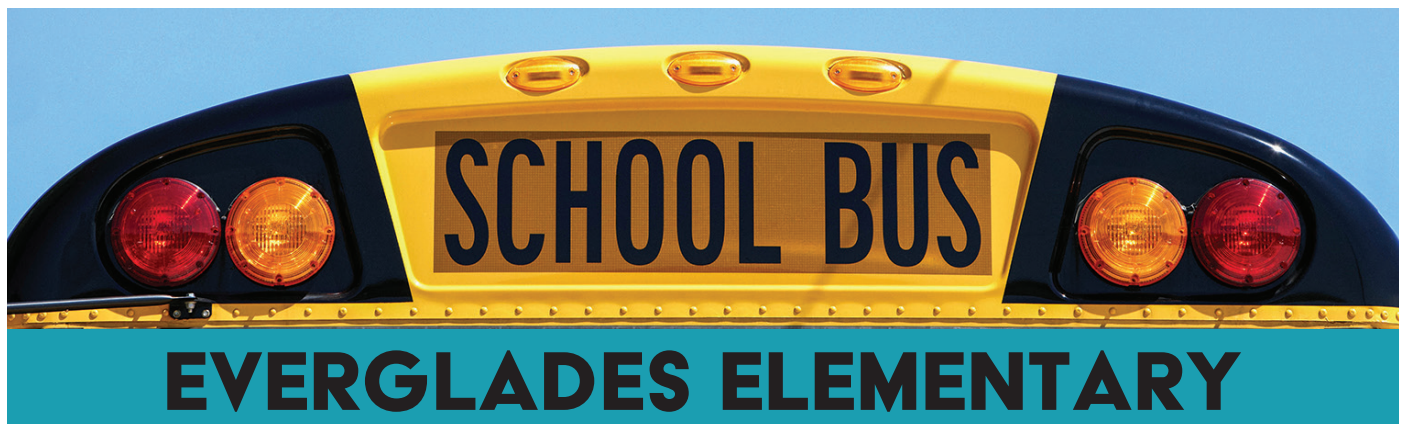
<u>TIME</u>	<u>LOCATION</u>
3:10 pm	NE 96th Ave & Box 2396
3:13 pm	NE 7th St & Box 9775
3:15 pm	NE 101st Ave & Box 1155
3:19 pm	NE 103rd Ave & NE 28th Ln
3:21 pm	NE 103rd Ave & NE 23rd Ln
3:22 pm	NE 103rd Ave & NE 19th St
3:25 pm	NE 103rd Ave & NE 11th Ct
3:27 pm	NE 104th Ct & Box 896
3:28 pm	NE 103rd Ave & NE 106th Ct

### 32 EES AM

<u>TIME</u>	<u>LOCATION</u>
7:17 am	NE 64th Ave & NE 11th St
7:20 am	NE 64th Ave & NE 9th Ln
7:21 am	NE 60th Ave & NE 8th St
7:22 am	NE 60th Ave & NE 3rd Ln
7:26 am	SE 8th St & Box 6631
7:28 am	SE 80th Ave & Box 7793
7:32 am	NE 80th Ave & NE 8th Dr
7:33 am	NE 82nd Ave & NE 12th Ln
7:34 am	NE 80th Ave & Box 1355
7:35 am	NE 80th Ave & NE 16th St

### 32 EES PM

<u>TIME</u>	<u>LOCATION</u>
3:10 pm	NE 64th Ave & NE 11th St
3:10 pm	NE 64th Ave & NE 9th Ln
3:12 pm	NE 60th Ave & NE 8th St
3:13 pm	NE 60th Ave & NE 3rd Ln
3:15 pm	SE 8th St & Box 6631
3:18 pm	SE 80th Ave & Box 7793
3:20 pm	NE 80th Ave & NE 8th Dr
3:21 pm	NE 82nd Ave & NE 12th Ln
3:22 pm	NE 80th Ave & Box 1355
3:23 pm	NE 80th Ave & NE 16th St



## BUS SCHEDULE

### 34 EES AM

<u>TIME</u>	<u>LOCATION</u>
6:45 am	NE 112th Ave & NE 32nd St
6:49 am	70 E & Gracewood Service Rd
6:59 am	NE 101st St & Box 11017
7:05 am	NE 128th Ave & NE 79th Dr
7:07 am	NE 128th Ave & Crossrounds
7:10 am	NE 128th Ave & 25th ST
7:10 am	NE 128th Ave & NE 20th Ct
7:11 am	NE 128TH AVE & Box 1111
7:13 am	SE 128th Ave & Box 800
7:16 am	SE 34th St & SE 132nd Ave
7:22 am	SE 46th St & Box 13660
7:27 am	SE 128th Ave & Box 5951
7:43 am	SE 30th Pkwy & Box 5873
7:44 am	SE 30th Pkwy & Box 6325

### 42 EES AM

<u>TIME</u>	<u>LOCATION</u>
7:07 am	70 E & NE 31st Ter
7:10 am	70 E & NE 56th Ave
7:13 am	NE 70th Ave & NE 11th St
7:19 am	NE 80th Ave & NE 37th St
7:25 am	70 E & NE 71st Ave
7:29 am	70 E & NE 64th Ave
7:31 am	70 E & NE 55th Trl
7:33 am	NE 42nd Ter & NE 9th Ln

### 51 EES AM

<u>TIME</u>	<u>LOCATION</u>
7:11 am	441 SE & Box 8485
7:18 am	441 SE & Treasure Island Motel
7:21 am	SE 28th St & SE 36th Ave
7:22 am	SE 28th St & SE 38th Ave
7:25 am	SE 26th Street & Box 3606
7:27 am	SE 34th Dr & SE 25th St
7:28 am	SE 25th St & Box 3752

### 34 EES PM

<u>TIME</u>	<u>LOCATION</u>
3:15 pm	NE 112th Ave & NE 32nd St
3:19 pm	70 E & Gracewood Service Rd
3:29 pm	NE 101st St & Box 11017
3:34 pm	NE 128th Ave & NE 79th Dr
3:37 pm	NE 128th Ave & Crossrounds
3:40 pm	NE 128th Ave & 25th ST
3:40 pm	NE 128th Ave & NE 20th Ct
3:41 pm	NE 128TH AVE & Box 1111
3:43 pm	SE 128th Ave & Box 800
3:46 pm	SE 34th St & SE 132nd Ave
3:51 pm	SE 46th St & Box 13660
3:57 pm	SE 128th Ave & Box 5951
4:08 pm	SE 30th Pkwy & Box 5873
4:09 pm	SE 30th Pkwy & Box 6325

### 42 EES PM

<u>TIME</u>	<u>LOCATION</u>
2:59 pm	70 E & NE 31st Ter
3:03 pm	70 E & NE 56th Ave
3:05 pm	NE 70th Ave & NE 11th St
3:09 pm	NE 80th Ave & NE 37th St
3:14 pm	70 E & NE 71st Ave
3:15 pm	70 E & NE 64th Ave
3:17 pm	70 E & NE 55th Trl
3:18 pm	NE 42nd Ter & NE 9th Ln

### 51 EES PM

<u>TIME</u>	<u>LOCATION</u>
3:00 pm	SE 25th St & Box 3752
3:01 pm	SE 34th Dr & SE 25th St
3:02 pm	SE 26th Street & Box 3606
3:05 pm	SE 28th St & SE 38th Ave
3:06 pm	SE 28th St & SE 36th Ave
3:09 pm	441 SE & Treasure Island Motel
3:16 pm	441 SE & Box 8485





## North Elementary is proud to be the home of the Tigers!

**W**e are excited to welcome everyone into the new school year! With the challenges of 2020 behind us, we have set our eyes on the new and promising opportunities for learning. First and foremost, we are committed to helping every child feel welcomed, connected, and part of North Elementary School - the home of the Tigers. Our efforts in maximizing positive outcomes for students have been recognized by the Florida PBIS (Positive Behaviors Interventions and Support) Project, and we were awarded the PBIS Resilience Model School Award for the 2020-2021 school year. Way to go team NES!

We take pride in being the home of the Tigers – a team of teachers and staff members committed to achieving excellence. We believe that the best educational outcomes can be achieved through a close collaboration with families as well as through community partnerships. While we are available to discuss the needs of our families at all times, we are an Academic Parent Teacher Teams (APTT) school, and we also utilize structured parent-teacher team meetings to address our students' individual needs throughout the year. This year, we will be introducing a Parent Information Binder in kindergarten and first grade in

order to provide easy access to valuable school resources to families.

North Elementary School is a home for an on-site gifted education program. We have several expert teachers who are gifted endorsed who guide our work in identification of gifted students who could potentially become part of the gifted program; specifically focusing on high risk as well as minority populations. Students in our gifted program have received various awards and have placed in honorable positions in events such as the Florida Elementary Schools Science Olympiad and Treasure Coast Stock Market Game.

Important information about our school can be found on our website at [nes.okee.k12.fl.us](http://nes.okee.k12.fl.us). We would like to ask that families would follow us on our North Elementary Facebook page to stay abreast of school updates (we can be found under NES Tigers). Our teachers will be utilizing electronic communication and messaging tools to stay in contact with families and share our students' successes each day. The primary guardians indicated in Skyward student information system will be also receiving a weekly newsletter from the principal via e-mail. We encourage our families to check the Skyward parent contact information prior to the school start to ensure that

it is correct as many important updates will be shared via all-calls, text messaging, as well as e-mail.

For the best educational outcome, it is important that students arrive at school on time. Staff members as well as student guides are positioned in our hallways in the mornings to help students find their way to their destination on campus. We offer free breakfast and lunch to all students. Our classes begin promptly at 8:10 AM, and we dismiss our students starting 2:50. All families will receive NES Rider Cards to be used at pickup.

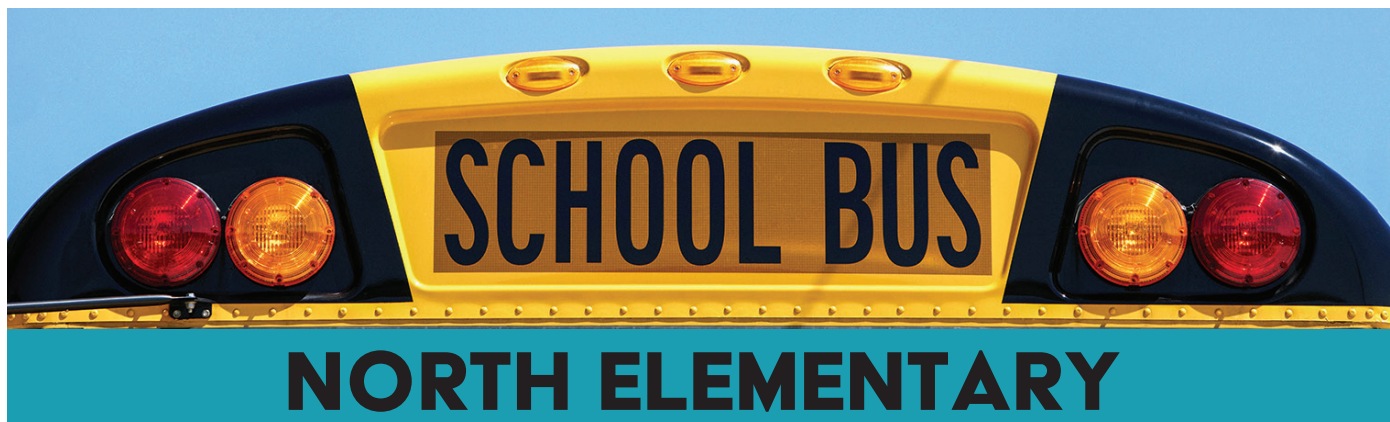
For safety, students will not be dismissed without the card or in the absence of the card, a photo ID of the person picking them up. For student safety,

visitors are not allowed on campus outside of scheduled school events, and there are no classroom or lunch room visitations. We would like to invite parents and community members to contact us should they be interested in serving on our Parent Teacher Organization (PTO) or School Advisory Committee (SAC).

Thank you for your continued support!

Sincerely,  
**Dr. Tuuli Robinson**  
Principal  
of North  
Elementary  
School





## BUS SCHEDULE

### 08 NES AM

<u>TIME</u>	<u>LOCATION</u>
6:47 am	441 N & Box 31100
6:49 am	NE 9th Ave & End of Road
6:54 am	NW 366th Trl & Box 476
6:59 am	NE 342nd Trl & NE 361st Ct
7:01 am	NE 342nd Trl & NE 356th Ct
7:03 am	NE 342nd Trl & NE 4th Dr
7:04 am	NW 352nd Ct & NW 4th Dr
7:05 am	NW 358th Blvd & NW 4th Dr
7:10 am	NW 392nd St & NW 24th Dr
7:17 am	NW 344th St & NW 29th Ave
7:18 am	NW 344th St & NW 21st Ave
7:25 am	NE 300th St & N Center Ave
7:34 am	441 N & MAC 2 (208)
7:37 am	441 N & MAC 4 (17000)
7:40 am	NE 168th St & Fire House

### 10 NES AM

<u>TIME</u>	<u>LOCATION</u>
7:07 am	NW 115th Dr & NW 2nd Ter
7:08 am	NE 115th Dr & NE 3rd Cir
7:10 am	NE 110th St & NE 1st Way
7:12 am	NW 110th St & NW 8th Ave
7:13 am	NW 8th Ave & NW 106th St
7:14 am	NW 106th St & NW 4th Ave
7:16 am	NW 102nd St & NW 8th Ave
7:18 am	NW 98th St & N Center Ave
7:19 am	NE 102nd St & NE 2nd Ter
7:29 am	NE 54TH TRL & Box 1849
7:30 am	NE 54th Trl & NE 50th Ct
7:32 am	NE 54th Trl & Box 2600
7:44 am	NE 54th Trl & NE 58th Dr

### 14 NES AM

<u>TIME</u>	<u>LOCATION</u>
7:10 am	441 N & NE 11th St
7:18 am	NW 36th St & NW 4th Ave
7:19 am	NW 36th St & NW 8th Ave
7:20 am	NW 36th St & Box 1319
7:21 am	NW 39th Cir & Box 1408
7:22 am	NW 39th Cir & Box 938

### 14 NES PM

<u>TIME</u>	<u>LOCATION</u>
3:03 pm	NW 36th St & NW 8th Ave
3:04 pm	NW 39th Cir & Box 938
3:05 pm	NW 39th Cir & Box 1408
3:06 pm	NW 36th St & Box 1319
3:08 pm	NW 36th St & NW 4th Ave
3:13 pm	441 N & NE 11th St

### 08 NES PM

<u>TIME</u>	<u>LOCATION</u>
3:09 pm	NE 168th St & Fire House
3:10 pm	441 N & MAC 4 (17000)
3:12 pm	441 N & MAC 2 (208)
3:22 pm	NE 300th St & N Center Ave
3:26 pm	441 N & Box 31100
3:30 pm	NE 9th Ave & End of Road
3:38 pm	NW 366th Trl & Box 476
3:43 pm	NE 342nd Trl & NE 361st Ct
3:44 pm	NE 342nd Trl & NE 356th Ct
3:47 pm	NE 342nd Trl & NE 4th Dr
3:48 pm	NW 352nd Ct & NW 4th Dr
3:50 pm	NW 358th Blvd & NW 4th Dr
3:54 pm	NW 392nd St & NW 24th Dr
4:05 pm	NW 344th St & NW 29th Ave
4:08 pm	NW 344th St & NW 21st Ave

### 10 NES PM

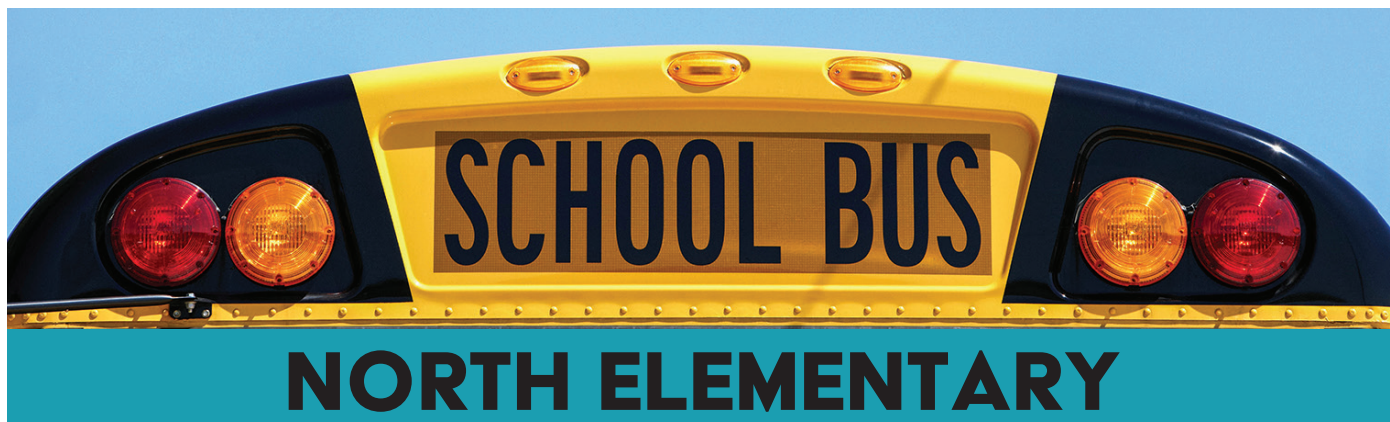
<u>TIME</u>	<u>LOCATION</u>
3:06 pm	NE 54th Trl & NE 58th Dr
3:08 pm	NE 54th Trl & Box 2600
3:10 pm	NE 54th Trl & NE 50th Ct
3:11 pm	NE 54TH TRL & Box 1849
3:24 pm	NW 115th Dr & NW 2nd Ter
3:26 pm	NE 115th Dr & NE 3rd Cir
3:28 pm	NE 110th St & NE 1st Way
3:30 pm	NW 110th St & NW 8th Ave
3:31 pm	NW 8th Ave & NW 106th St
3:32 pm	NW 106th St & NW 4th Ave
3:34 pm	NE 102nd St & NE 2nd Ter
3:37 pm	NW 102nd St & NW 8th Ave
3:40 pm	NW 98th St & N Center Ave

### 21 NES AM

<u>TIME</u>	<u>LOCATION</u>
7:06 am	NW 144th Dr & NW 9th Ave
7:12 am	NW 160th St & Box 3631
7:15 am	NW 160th St & Box 5065
7:16 am	NW 160th St & Box 4900
7:20 am	NW 38th Ave & NW 163rd Ct
7:22 am	NW 38th Ave & NW 167th Ct
7:27 am	NW 32nd Ave & NW 175th Ct
7:29 am	NW 32nd Ave & NW 172nd Ct
7:35 am	NE 160th St & NE 1st Way
7:39 am	441 N & NE 131st Ln
7:45 am	441 N & Villa Margaret







## BUS SCHEDULE

### 21 NES PM

<u>TIME</u>	<u>LOCATION</u>
2:59 pm	441 N & Villa Margaret
3:09 pm	NE 160th St & NE 1st Way
3:19 pm	NW 32nd Ave & NW 175th Ct
3:20 pm	NW 32nd Ave & NW 172nd Ct
3:24 pm	NW 160th St & Box 3631
3:24 pm	NW 38th Ave & NW 163rd Ct
3:26 pm	NW 38th Ave & NW 167th Ct
3:30 pm	NW 160th St & Box 5065
3:30 pm	NW 160th St & Box 4900
3:40 pm	NW 144th Dr & NW 9th Ave
3:44 pm	441 N & NE 131st Ln

### 24 NES AM

<u>TIME</u>	<u>LOCATION</u>
7:13 am	NW 21st Ln & NW 5th Ave
7:15 am	NW 17th St & NW 5th Ave
7:16 am	NW 15TH ST & BOX 509
7:17 am	NW 7th Ave & Box 1712
7:21 am	NW 12TH ST & BOX 202
7:22 am	NW 10th St & NW 3rd Ave
7:23 am	NW 9TH ST & BOX 420
7:26 am	NW 9th Ave & NW 11th St

### 24 NES PM

<u>TIME</u>	<u>LOCATION</u>
2:58 pm	NW 21st Ln & NW 5th Ave
2:59 pm	NW 17th St & NW 5th Ave
2:59 pm	NW 15TH ST & BOX 509
3:00 pm	NW 7th Ave & Box 1712
3:02 pm	NW 12TH ST & BOX 202
3:03 pm	NW 10th St & NW 3rd Ave
3:04 pm	NW 9TH ST & BOX 420
3:05 pm	NW 9th Ave & NW 11th St

### 39 NES AM

<u>TIME</u>	<u>LOCATION</u>
7:08 am	441 N & Box 9084
7:11 am	441 N & NE 120th St
7:13 am	441 N & Box 12600
7:15 am	NE 144th St & Box 2050
7:25 am	NE 120TH ST & Box 10200
7:37 am	NE 26th Ave & NE 131st Ln
7:39 am	NE 131st Ln & NE 22nd Ave
7:40 am	NE 131st Ln & NE 18th Ave
7:50 am	NW 36th St & NW 10th Ave
7:52 am	NW 12th Ave & NW 35th Ln

### 39 NES PM

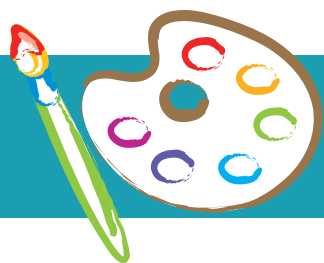
<u>TIME</u>	<u>LOCATION</u>
2:57 pm	NW 12th Ave & NW 35th Ln
2:58 pm	NW 36th St & NW 10th Ave
3:03 pm	441 N & Box 9084
3:06 pm	441 N & NE 120th St
3:06 pm	441 N & Box 12600
3:09 pm	NE 131st Ln & NE 18th Ave
3:10 pm	NE 131st Ln & NE 22nd Ave
3:11 pm	NE 26th Ave & NE 131st Ln
3:15 pm	NE 144th St & Box 2050
3:29 pm	NE 120TH ST & Box 10200

### 57 NES AM

<u>TIME</u>	<u>LOCATION</u>
6:35 am	441 N & MAC 3 (207)
6:39 am	NE 224th St & LARSON 3
6:42 am	NE 48th Ave & Box 22800
6:44 am	NE 48th Ave & NE 272nd St
6:47 am	NE 304th St & NE 55th Ave
6:48 am	NE 304th St & NE 65th Ter
6:51 am	NE 304th St & End of Pavement
6:56 am	NE 301st Blvd & Box 3255
6:58 am	NE 304th St & NE 23rd Way
7:08 am	441 N & Mac 1

### 57 NES PM

<u>TIME</u>	<u>LOCATION</u>
3:25 pm	441 N & Mac 1
3:27 pm	441 N & MAC 3 (207)
3:33 pm	NE 224th St & LARSON 3
3:39 pm	NE 48th Ave & Box 22800
3:45 pm	NE 48th Ave & NE 272nd St
3:50 pm	NE 304th St & NE 55th Ave
3:53 pm	NE 304th St & NE 65th Ter
3:57 pm	NE 304th St & End of Pavement
4:08 pm	NE 301st Blvd & Box 3255
4:12 pm	NE 304th St & NE 23rd Way



## Seminole Elementary faculty & staff dedicated to excellence

**G**reetings Seminole Elementary Families & Friends, it is with great excitement that I welcome you back to the 2021-2022 school year as the newly appointed Principal of Seminole Elementary. I come to you with over 20 years of experience in education. I have enjoyed seven of those years in public school leadership as an Assistant Director of Exceptional Student Services, a District Specialist/Consultant, and an Assistant Principal. Most recently, I served two of those years as the Assistant Principal at Seminole Elementary. I am honored to have this opportunity to lead this wonderful school community.

Seminole Elementary faculty and staff are dedicated to excellence in your child's academic, social, physical and emotional development. We recognize that part of children's success at school relies heavily on the support offered both at school and at home. We are happy to work in partnership with you at Seminole Elementary. Important reminders:

Students will return to school on **TUESDAY, August 10, 2021.**

**SCHOOL HOURS:** School hours are **8:00 a.m. – 3:15 p.m.** The faculty, staff, and I are all looking forward to getting to know and working with all of you to ensure

that each student in the school is successful this year academically and socially. To that end, we ask that ***all students come to school on time each day*** with all their required materials prepared to do their best. Success is a team effort, and every player, the students, the teachers, and the parents are integral parts of that team. Frequent late arrivals and/or early dismissals place students at risk for learning deficits and academic failure. **Please be sure to provide your child/children with breakfast if they arrive after 8:30 a.m.**

**ARRIVAL/PARENT DROP-OFF TRAFFIC PATTERN:** Students may be dropped-off at 7:30 a.m. Parents, please use the roundabout towards the back of the school when dropping off or picking up your student. This helps us avoid congestion and issues with traffic back up. Do not use the driveway before the roundabout to turn around. This creates a very dangerous situation for cars that are driving to the roundabout or turning into the school. Pull down to the end of the sidewalk to the sign marked "Drop-off Here."

**ARRIVAL/PARENT DISMISSAL/PARENT PICK-UP:** Students will be dismissed at **3:20 p.m.** Designated areas will be marked for students to form lines in the gated area near

the flagpole. Pull down to the end of the sidewalk to the sign marked "Drop-off Here". The gate will be opened at 3:00 p.m.; however, be advised that a line of cars usually forms prior to this time.

**SCHOOL BREAKFAST & LUNCH:** School breakfast and lunches will be served starting the first day of school. Breakfast and lunch are free of charge to all students regardless of eligibility.

**ATTENDANCE/TARDIES/CHECKOUTS:** To the extent possible, we ask that students arrive on time and attend school everyday, all day. In the event you need to checkout your child prior to the end of the school day, we ask that you do so no later than **2:30 p.m.**

**OPEN HOUSE:** Please join us on Thursday, August 5th from 5:00pm to 7:00pm for Open House. Attending Open House is an important first step in making sure your child/children have a successful school year.

**INSTRUCTIONAL PROGRAMS:** The district and school's priority is to prepare students for college, careers and productive citizenship. All instructional programs are rigorous, well-rounded and aligned to the Florida Standards. Teachers and paraprofessionals are credentialed and participate in ongoing professional



development. Most importantly, high expectations are maintained by ALL staff for ALL students.

**STUDENT AGENDAS & COMMUNICATION FOLDERS:**

ALL students will be provided agendas in grades 3 - 5 and communication folders in grades K - 5.

**SCHOOL SUPPLIES:** School supply lists can be on Page 8 of this School information Guide.

**PARENT INVOLVEMENT:** We welcome your participation! During Open House, you will have the opportunity to learn more about AND to join our School Advisory Council (SAC), Parent Teacher Organization (PTO) and Parent University. These organizations are opportunities for stakeholders to give input regarding our school budget, school improvement initiatives,

fundraisers, school activities and student incentives. Parent University will provide workshops to help parents understand their children and to support academics in the home.

**TEACHER/CLASSROOM**

**REQUESTS:** Administration has given great consideration in properly placing students in the most conducive classroom settings. Once a child has been placed, teacher/classroom requests will not be honored unless there are extenuating circumstances.

**TRANSPORTATION/BUSES:** Be sure your child and his/her teacher know whether your child will be parent pick-up or bus rider. On the first day of school, send a note (and later write in the communication folder) parent pick-up OR your child's bus number AND your home address and contact information.

This year is going to be amazing as we continue to provide rigorous and relevant academic experiences for our students and help them make real-world connections. My door is always open, and I welcome your input and feedback. Please feel free to call or email me to discuss any concerns you might have throughout the school year at 863-462-5116. You can also stay up-to-date by visiting our school website at: [seminoleelementaryschool.sites.thedigitalbell.com/](http://seminoleelementaryschool.sites.thedigitalbell.com/) and our Facebook page at: [facebook.com/SeminoleElementaryofOkee](https://www.facebook.com/SeminoleElementaryofOkee)

Seminole Elementary is focused on Excellence! Welcome back everyone!!

**Dr. Robyn Ziolkowski**  
Principal, Seminole  
Elementary

## School Lunch Info

The Child Nutrition Department of Okeechobee County Schools is pleased to inform the public that we will be continuing with the USDA federal program for Breakfast and Lunch called Community Eligibility Provision (CEP) for this coming school year 2020-21.

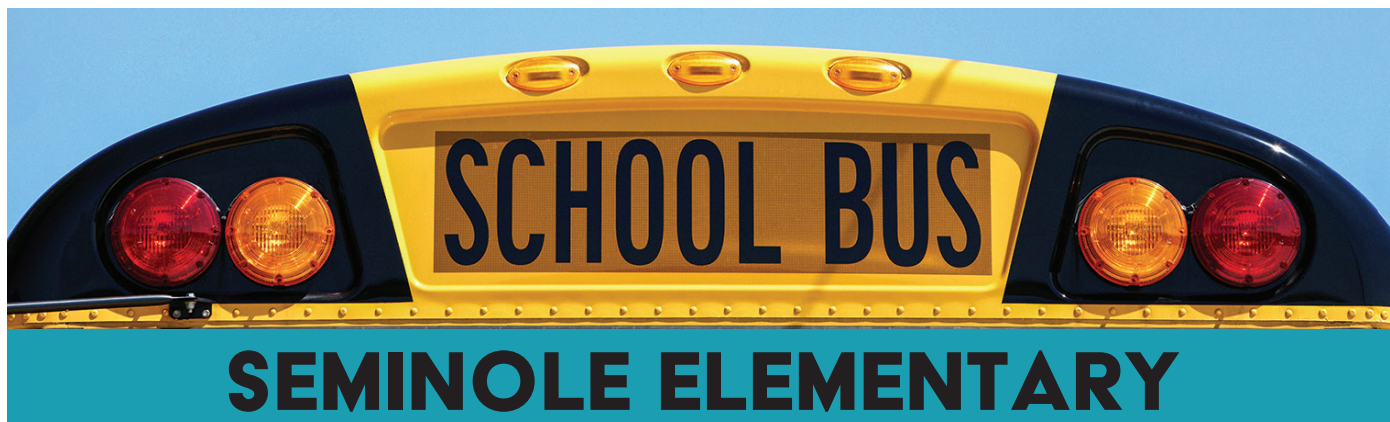
All of our schools will be participating and will provide healthy breakfast and lunch meals each day at no charge to all students.

Current Student debt will not be erased; however, students will not incur future debt for their breakfast and lunch meals.

Students and adults will still be allowed to carry accounts with their cafeteria for a la carte and snack purchases. Adult breakfast price is \$2.50 and adult lunch will be \$4.00.

*If you have any questions, please contact Lisa R. Bell, Food Service Supervisor at 863-462-5148 x 1214*





## BUS SCHEDULE

### 06 SEM AM

<u>TIME</u>	<u>LOCATION</u>
7:40 am	NW 46th Ave & Villas

### 06 SEM PM

<u>TIME</u>	<u>LOCATION</u>
3:19 pm	NW 46th Ave & Villas

### 12 SEM AM

<u>TIME</u>	<u>LOCATION</u>
6:26 am	Brinkerhoff Ln & Kelton Ter
6:27 am	Broadland Ln & Jordan Ter
6:31 am	SW Rucks Dairy Rd & Box 2527
6:45 am	NW 128th Ave & NW 20th St
6:47 am	NW 128TH AVE & Box 3038
6:59 am	NW 56th St & NW 154th Ave
7:09 am	SW 128th Ave & 1st turf farm entrance
7:23 am	NW 18th St & NW 36th Ter
7:25 am	NW 18th St & 50' before NW 46th Ave

### 12 SEM AM

<u>TIME</u>	<u>LOCATION</u>
3:37 pm	NW 18th St & 50' before NW 46th Ave
3:39 pm	NW 18th St & NW 36th Ter
3:52 pm	SW 128th Ave & 1st turf farm entrance
3:56 pm	NW 128th Ave & NW 20th St
3:59 pm	NW 128TH AVE & Box 3038
4:07 pm	NW 56th St & NW 154th Ave
4:19 pm	Broadland Ln & Jordan Ter
4:20 pm	Brinkerhoff Ln & Kelton Ter
4:26 pm	SW Rucks Dairy Rd & Box 2527

### 14 SEM AM

<u>TIME</u>	<u>LOCATION</u>
7:44 am	NW 24th Ln & NW 34th Ave
7:45 am	NW 35th Dr & NW 37th Ave
7:46 am	NW 36th St & NW 38th Ave

### 14 SEM PM

<u>TIME</u>	<u>LOCATION</u>
3:28 pm	NW 36th St & NW 38th Ave
3:30 pm	NW 35th Dr & NW 37th Ave
3:31 pm	NW 24th Ln & NW 34th Ave

### 15 SEM AM

<u>TIME</u>	<u>LOCATION</u>
7:16 am	NW 24th St & NW 53rd Ter
7:18 am	NW 24th St & NW 63rd Ter
7:20 am	NW 50th Ave & NW 27th St
7:22 am	NW 30th St & Box 5277
7:23 am	NW 30th St & NW 59th Ter
7:26 am	NW 30th St & NW 74th Ter
7:30 am	NW 30th St & Box 6640
7:33 am	NW 30th St & NW 47th Ave

### 15 SEM PM

<u>TIME</u>	<u>LOCATION</u>
3:20 pm	NW 30th St & NW 47th Ave
3:22 pm	NW 30th St & NW 59th Ter
3:24 pm	NW 30th St & NW 74th Ter
3:26 pm	NW 30th St & Box 6640
3:28 pm	NW 30th St & Box 5277
3:29 pm	NW 50th Ave & NW 27th St
3:30 pm	NW 24th St & NW 53rd Ter
3:32 pm	NW 24th St & NW 63rd Ter

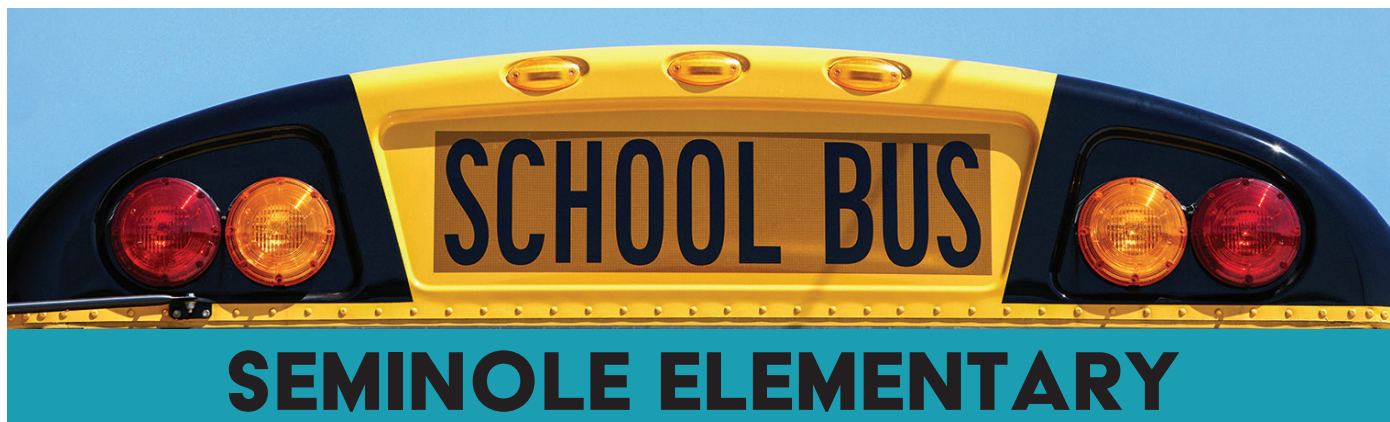
### 22 SEM AM

<u>TIME</u>	<u>LOCATION</u>
6:50 am	NW 144th Ave & NW 288th St
6:52 am	NW 144th Ave & NW 272nd St
6:53 am	NW 144th Ave & NW 256th St
6:55 am	NW 144th Ave & NW 248th St
7:10 am	NW 160th Dr & NW 214th Cir
7:15 am	98 N & 19655
7:24 am	NW 160th ST & Box 12409
7:35 am	98 N & NW 67th Ln
7:37 am	98 N & Milking R

### 22 SEM PM

<u>TIME</u>	<u>LOCATION</u>
3:21 pm	98 N & Milking R
3:22 pm	98 N & NW 67th Ln
3:34 pm	NW 160th ST & Box 12409
3:41 pm	98 N & 19655
3:48 pm	NW 160th Dr & NW 214th Cir
3:51 pm	NW 144th Ave & NW 248th St
3:52 pm	NW 144th Ave & NW 256th St
3:55 pm	NW 144th Ave & NW 272nd St
3:58 pm	NW 144th Ave & NW 288th St





## BUS SCHEDULE

### 24 SEM AM

<u>TIME</u>	<u>LOCATION</u>
7:40 am	NW 36th St & NW 23rd Ave
7:45 am	Hwy 98 N & Box 2319
7:47 am	NW 18th St & NW 42nd Ave

### 24 SEM PM

<u>TIME</u>	<u>LOCATION</u>
3:33 pm	Hwy 98 N & Box 2319
3:37 pm	NW 18th St & NW 42nd Ave
3:44 pm	NW 36th St & NW 23rd Ave

### 40 SEM AM

<u>TIME</u>	<u>LOCATION</u>
7:17 am	NW 36th St & NW 18th Ave
7:20 am	NW 36th St & NW 28th Ave
7:22 am	NW 36th St & NW 33rd Ave
7:25 am	NW 36th St & NW 40th Dr

### 40 SEM PM

<u>TIME</u>	<u>LOCATION</u>
3:34 pm	NW 36th St & NW 40th Dr
3:35 pm	NW 36th St & NW 33rd Ave
3:36 pm	NW 36th St & NW 28th Ave
3:38 pm	NW 36th St & NW 18th Ave

### 41 SEM AM

<u>TIME</u>	<u>LOCATION</u>
7:26 am	NW 80th Ave & NW 82nd Ct
7:27 am	NW 80th Ave & NW 86th Ct
7:29 am	NW 80th Ave & NW 92nd Ct
7:30 am	NW 80th Ave & NW 96th Ct

### 41 SEM PM

<u>TIME</u>	<u>LOCATION</u>
3:24 pm	NW 80th Ave & NW 82nd Ct
3:25 pm	NW 80th Ave & NW 86th Ct
3:27 pm	NW 80th Ave & NW 92nd Ct
3:28 pm	NW 80th Ave & NW 96th Ct

### 53 SEM AM

<u>TIME</u>	<u>LOCATION</u>
7:28 am	NW 10th Ave & NW 10th St (Dean's Ct)
7:41 am	NW 18th St & NW 38th Ave

### 53 SEM PM

<u>TIME</u>	<u>LOCATION</u>
3:02 pm	NW 18th St & NW 38th Ave
3:19 pm	NW 10th Ave & NW 10th St (Dean's Ct)

### 55 SEM AM

<u>TIME</u>	<u>LOCATION</u>
6:45 am	NW 192nd Ave & NW 320th St
6:47 am	NW 192nd Ave & NW 302nd St
6:49 am	NW 192nd Ave & NW 288th St
6:51 am	NW 192nd Ave & NW 256th St
6:57 am	NW 176th Ave & NW 203rd St
6:59 am	NW 176th Ave & NW 190th Rd
7:16 am	NW 189th Ave & NW 83rd Trl
7:18 am	NW 144th Trl & Box 9036
7:21 am	NW 144th Trl & NW 96th St
7:24 am	NW 144th Trl & Box 12900
7:31 am	98 N & NW 120th St

### 55 SEM PM

<u>TIME</u>	<u>LOCATION</u>
3:25 pm	98 N & NW 120th St
3:32 pm	NW 144th Trl & Box 12900
3:37 pm	NW 144th Trl & NW 96th St
3:40 pm	NW 144th Trl & Box 9036
3:42 pm	NW 189th Ave & NW 83rd Trl
3:58 pm	NW 176th Ave & NW 190th Rd
4:00 pm	NW 176th Ave & NW 203rd St
4:09 pm	NW 192nd Ave & NW 256th St
4:16 pm	NW 192nd Ave & NW 288th St
4:19 pm	NW 192nd Ave & NW 302nd St
4:23 pm	NW 192nd Ave & NW 320th St



## Eagles S.O.A.R. at South Elementary School

**W**elcome back to our students and families! We are excited to start another great year together! We are prepared to deliver high quality instruction to our students. Please find us on Facebook and "like us" so you can receive updates regularly. We also will be inviting you to download the Class Dojo app so we can stay in constant communication with you.

School safety for all children and staff is our priority at South Elementary. We adhere to district policies and implement safety protocols to ensure a safe learning environment for all students. Parents are allowed to walk their child(ren) to class the first week of school. All car riders and walkers must be dropped off in the drop off line and will walk to our gate. We will have staff supervision throughout the campus to ensure all children receive breakfast and are taken to their correct classrooms.

Parents can begin dropping off children at 7:45 am. For drop off in the morning, one line is formed. We have staff and student Safety Patrol members lined up on the sidewalk to help open car

doors. Children proceed to our gate and then to get breakfast and go to their classrooms. For parent pick up in the afternoons, two lines are formed. A staff member will call students' names and staff members will help load the children into their vehicles.

We believe that all children can succeed and are dedicated to ensure children learn in a safe, engaging, and nurturing environment. We are promoting literacy school-wide and want our students to love to read! Please help us by reading with your child at home. Did you know you can access thousands of books for free online if you have a library card? We will help you locate this amazing service! We also will regularly educate students regarding health and how we can keep one another safe.

Our school will continue to focus on social-emotional learning this school year. All students will receive daily instruction in different categories of social-emotional learning. It is our responsibility to empower our students to communicate, cooperate, embrace diversity, and resolve conflict. We will be building healthy relationships and

helping develop our children's compassion.

We love family involvement! We will host events throughout the year for our families. We hope you will join us at these! We appreciate your involvement in your child's education! Please ensure your contact information is up to date. I also post a Weekly Memo for families to keep you updated on school happenings. This is available on Facebook and also sent to your email address and phone number listed in Skyward.

We are so thrilled for this upcoming school year and cannot wait to see the successes among our students! We look forward to seeing you at Open House. Please do not hesitate to reach out to me if I can answer any questions you may have! We love your children and cannot wait to watch them SOAR this year!

Warmly,  
**Emily  
Streelman**  
Principal  
South  
Elementary  
School







## Dr. Kindell Wishes You a Great Start to a New School Year!

Everglades Pediatric Dentistry serves infants, children, teens, and patients with special needs in Okeechobee, Highlands County, and the surrounding areas

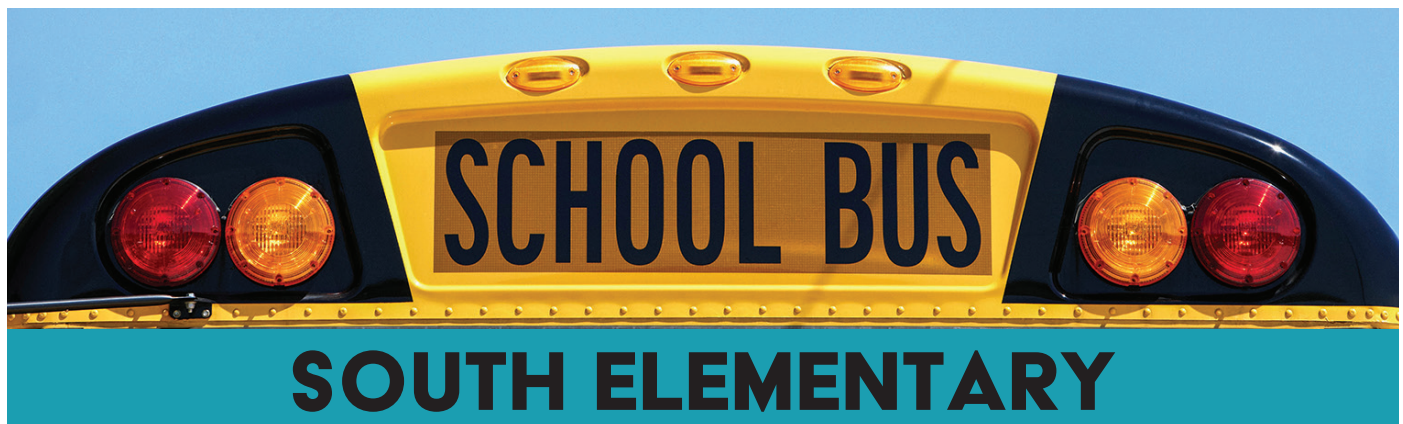
**MELISSA KINDELL, DMD**  
**CALL US TODAY! 863-357-7338**  
**NEW PATIENTS WELCOME!**

**Okeechobee location:**  
2029 HWY 441 N  
Okeechobee, FL 34972

**Sebring location:**  
5606 US 27 N  
Sebring, FL 33870

**MOST INSURANCES ACCEPTED**  
**EMERGENCIES ARE WELCOME**





## BUS SCHEDULE

### 18 SES AM

<u>TIME</u>	<u>LOCATION</u>
7:15 am	SW 21st Pkwy & SW 69th Ter
7:20 am	SW 9th St & Box 7845
7:21 am	SW 85th Way & SW 10th Ln
7:23 am	SW 86th Ave & SW 14th Ln
7:24 am	SW 14th Ln & SW 83rd Ave
7:28 am	SW 87th Ter & SW 5th Ln
7:31 am	SW 85th Ave & Box 300
7:34 am	SW 77th Ter & Box 569
7:42 am	SW 18th Ave & SW 2nd Way
7:46 am	SW 15th St & Box 909

### 19 SES AM

<u>TIME</u>	<u>LOCATION</u>
7:15 am	SW 53rd St & Box 1952
7:20 am	78 W & Box 7655
7:24 am	BHR Community Center
7:33 am	SW 39th Ln & SW 13th Terr
7:35 am	SW 16TH AVE & Box 3806
7:38 am	SW 24th Ave & SW 32nd St
7:41 am	SW 28th St & Oak Lake Apts

### 20 SES AM

<u>TIME</u>	<u>LOCATION</u>
7:13 am	SW 24th Ave & SW 3rd Ct
7:18 am	NW 38th Ter & NW 4th St
7:19 am	NW 38th Ter & NW 1st St
7:21 am	NW 1st St & Box 3465
7:26 am	SW 16th St & SW 40th Dr
7:28 am	SW 34th Ter & Box 1602
7:29 am	SW 34th Ter & SW 19th St
7:30 am	SW 34th Ter & SW 22nd St
7:31 am	SW 37th Ave & SW 20th St
7:34 am	SW 24th Ave & SW 19th Ln
7:35 am	2654 SW 24th Ave

### 18 SES PM

<u>TIME</u>	<u>LOCATION</u>
2:58 pm	SW 15th St & Box 909
3:03 pm	SW 18th Ave & SW 2nd Way
3:13 pm	SW 21st Pkwy & SW 69th Ter
3:20 pm	SW 9th St & Box 7845
3:22 pm	SW 85th Way & SW 10th Ln
3:23 pm	SW 86th Ave & SW 14th Ln
3:23 pm	SW 14th Ln & SW 83rd Ave
3:27 pm	SW 87th Ter & SW 5th Ln
3:28 pm	SW 85th Ave & Box 300
3:32 pm	SW 77th Ter & Box 569

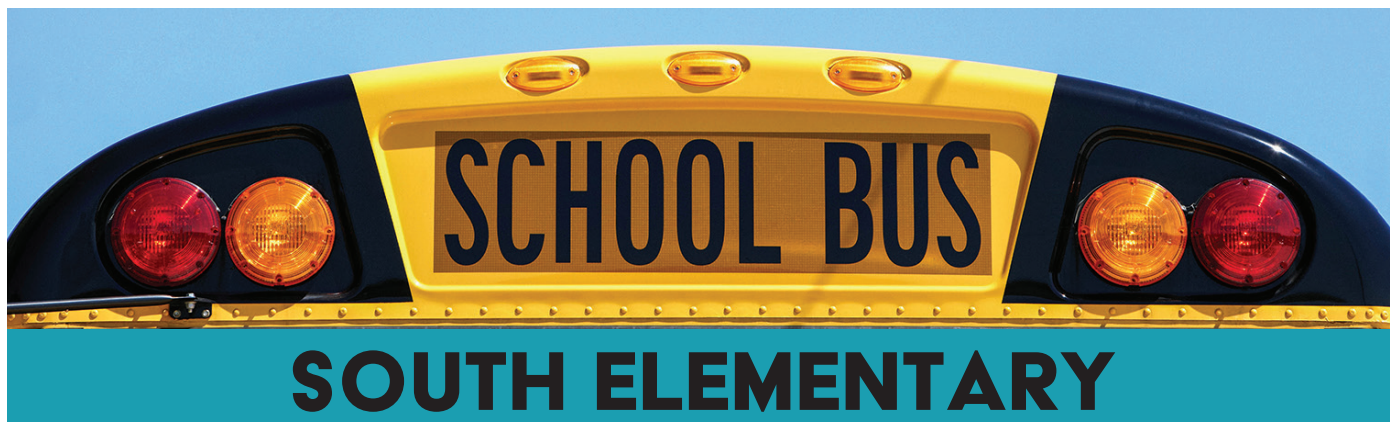
### 19 SES PM

<u>TIME</u>	<u>LOCATION</u>
2:59 pm	SW 28th St & Oak Lake Apts
3:01 pm	SW 24th Ave & SW 32nd St
3:04 pm	SW 16TH AVE & Box 3806
3:05 pm	SW 39th Ln & SW 13th Terr
3:09 pm	SW 53rd St & Box 1952
3:12 pm	78 W & Box 7655
3:21 pm	BHR Community Center

### 20 SES PM

<u>TIME</u>	<u>LOCATION</u>
3:00 pm	2654 SW 24th Ave
3:02 pm	SW 24th Ave & SW 19th Ln
3:05 pm	SW 24th Ave & SW 3rd Ct
3:07 pm	NW 1st St & Box 3465
3:07 pm	NW 38th Ter & NW 1st St
3:08 pm	NW 38th Ter & NW 4th St
3:15 pm	SW 16th St & SW 40th Dr
3:16 pm	SW 34th Ter & Box 1602
3:17 pm	SW 34th Ter & SW 19th St
3:18 pm	SW 37th Ave & SW 20th St
3:19 pm	SW 34th Ter & SW 22nd St





## BUS SCHEDULE

### 35 SES AM

<u>TIME</u>	<u>LOCATION</u>
7:17 am	441 S & Box 4425
7:18 am	441 SE & Box 246
7:19 am	441 SE & Box 480
7:20 am	441 SE & SE 14th Ter
7:22 am	441 SE & SE 27th Ct
7:23 am	441 SE & Shady Oaks
7:24 am	SE 18th Ter & Box 3802
7:25 am	SE 18th Ter & SE 34th Ln
7:26 am	SE 18th Ter & SE 31st St
7:26 am	SE 18th Ter & SE 29th St
7:27 am	SE 18th Terr & 50' after SE 24th Blvd
7:29 am	SE 25th Dr & SE 25th Ter
7:30 am	SE 24th Blvd & Box 2510
7:38 am	441 S & Town Center Apt
7:40 am	SW 2nd Ave & Box 2404

### 35 SES PM

<u>TIME</u>	<u>LOCATION</u>
2:59 pm	441 S & Town Center Apt
3:01 pm	SW 2nd Ave & Box 2404
3:03 pm	441 S & Box 4425
3:04 pm	441 SE & Box 246
3:05 pm	441 SE & Box 480
3:06 pm	441 SE & SE 14th Ter
3:08 pm	441 SE & SE 27th Ct
3:09 pm	441 SE & Shady Oaks
3:10 pm	SE 18th Ter & Box 3802
3:11 pm	SE 18th Ter & SE 34th Ln
3:12 pm	SE 18th Ter & SE 31st St
3:12 pm	SE 18th Ter & SE 29th St
3:13 pm	SE 18th Terr & 50' after SE 24th Blvd
3:15 pm	SE 25th Dr & SE 25th Ter
3:16 pm	SE 24th Blvd & Box 2510

### 36 SES AM

<u>TIME</u>	<u>LOCATION</u>
7:40 am	NW 36th Ter & NW 7th St
7:40 am	NW 36th Ter & NW 5th St

### 36 SES PM

<u>TIME</u>	<u>LOCATION</u>
3:05 pm	NW 36th Ter & NW 5th St
3:05 pm	NW 36th Ter & NW 7th St

### 50 SES AM

<u>TIME</u>	<u>LOCATION</u>
7:11 am	NE 14th Ave & NE 6th St
7:19 am	NE 3rd St & Box 1761

### 50 SES PM

<u>TIME</u>	<u>LOCATION</u>
3:00 pm	NE 3rd St & Box 1761
3:02 pm	NE 14th Ave & NE 6th St

### 52 SES AM

<u>TIME</u>	<u>LOCATION</u>
7:42 am	441 SE & Box 833 (Shannon's)

### 52 SES PM

<u>TIME</u>	<u>LOCATION</u>
2:57 pm	441 SE & Box 833 (Shannon's)

## Safety Smarts



### on the bus

**Follow these simple tips to get to and from school safely.**

- Board the bus one at a time, and hold the handrail when entering and exiting the bus.
- Go directly to your seat, and remain seated and facing forward the entire bus ride.
- Talk quietly, so as not to distract the bus driver, and always listen to the bus driver's directions.
- Keep the bus aisles clear, and never put your head, arms or hands out of the bus windows.



## Okeechobee High School: Take part in telling the OHS story

**W**elcome back to the 2021-2022 school year! The community, students, staff, and faculty all take part in telling the story of Okeechobee High School.

Follow us on Facebook: @OkeechobeeHS; on Instagram: @ohsbrahmans or follow the hashtags: #GoBrahmans and #TheBrahmanWay

The Brahman Way refers to the tradition of "Excellence through P.R.I.D.E." while also addressing our school's mission to create a community of lifelong learners who care and support one another as individuals. Our traditions are the very foundation upon which we build our school culture.

Perseverance, Respect, Integrity, Determination, and Ethics will ring loud and true as we are able to get back to what makes this school so special.

The Class of 2022 has been passed the torch to carry the responsibility of school leaders and the Brahman Pride that is found throughout this supportive community.

How are we preparing every student to be successful beyond high school? Becoming College and Career Ready gives every graduate the chance to start building a resume' or transcript that communicates their interests and work ethic. Every student has the opportunity to take courses that will lead them toward post-secondary success. Rigorous courses on our campus ensures that students are prepared for the next level, no matter where they begin. Our Advanced Placement

(AP) offerings have continued to grow year after year. We are proud to offer AP Literature, Language, Art, Chemistry, Environmental Science, Human Geography, World History, US History, Macroeconomics, Government and Politics, Psychology, Computer Science Principles, Spanish, and Calculus. We saw our AP exam school pass rate shoot back up to our historical rate, despite numerous quarantines and virtual school settings. This past school year we had our first group of 8 graduates earn an AP Capstone diploma, a national honorary diploma distinction showing the successful completion of 4 or more AP courses and AP exams, and passing the task and AP test of the two Capstone courses, AP Seminar (Junior year) and AP Research (Senior year). Both the AP Seminar and AP Research courses had a 100% pass rate this year! Through our partnership with Indian River State College, students are able to be dual enrolled as a high school and college student.

Last year Okeechobee High School graduated 15 high school seniors who had successfully completed an Associates of Arts degree from IRSC. This year's graduating class has the potential to double that statistic! Students are offered a wide array of courses in multiple disciplines. English, Math, Science, History, Education (teaching), and Student Success courses are offered during the school day on campus. We are also fortunate to provide a shuttle that runs

between the high school and the Dixon Hendry campus for our students to have access to Math courses. Students have the potential to earn both college and high school credit for free if they are able to complete the course with a "C" or better. Our CTE programs continue to impress with the number of industry certificates earned during the school year. With last year's total topping out at 386 industry certifications, even despite a pandemic, our CTE programs are stronger than ever. Notify your guidance counselor if you are interested in Health Science, Building Construction Technologies, Auto Maintenance and Light Repair, Animal Science and Services, Technical Ag Operations, Aquaculture, Digital Design, and Digital Information Technologies. Many of our CTE programs have a professional relationship with community businesses and trade schools. Taking these courses allow students to gather information, earn nationally recognized professional certificates, and expand their career network while still in high school.

We are looking forward to hosting Open House and getting to meet our students face to face for the first time this school year. Our Sophomore Open House is an event that is exclusive to our incoming 10th graders and their parents. The Sophomore Open House will be held on Wednesday, August 4 at OHS main campus from 6:00 PM to 8:00 PM. This event is more structured to allow for



both students and parents to ask questions.

Parents will meet with the principal in the gym while students will gather in the OHS Lecture Hall. After a brief orientation for both groups, they will reunite with their new schedule and map in hand to roam the campus and meet their teachers. The traditional Open House for all other students will be held Thursday, August 5 from 7:00 PM – 9:00 PM.

Parking stickers will be sold for those students who intend to drive to school at the OHS main campus. Parking is not guaranteed and will be issued on a first come, first serve basis. As in previous years, Seniors will be given the opportunity to purchase their parking passes first on Thursday, August 5 from 1:00 PM – 4:00 PM. Juniors will later be able to purchase parking stickers from 2:30 PM – 4:00 PM. Sophomores

may purchase parking passes during the first week of school. No parking will be sold on Friday or Monday, August 6-9. To expedite the process for parking stickers, students must bring their Driver's License, Proof of Insurance, Vehicle Registration, and signed Drug Testing Permission slip. All students purchasing parking stickers on Thursday, August 5 must have a 2.0 GPA, and must pay for any unpaid fines or fees. Juniors and Seniors that have a 3.5 or higher GPA will receive free parking. For all other students who have at least a 2.0 GPA, parking fees are \$40 per year. Students under a 2.0 GPA will be charged \$50 per semester. Students under a 1.5 GPA are not eligible to park on campus.

Communication is vital to your student's success. In order to receive a weekly email containing the highlights and events of the week, please make

sure that you have added your email account to your student's Skyward. We welcome and encourage parent input and involvement. If you would like to be a part of our school advisory committee, please email me for more information. I can be reached at [myersl@okee.k12.fl.us](mailto:myersl@okee.k12.fl.us)

Daily decisions route your path to graduation. Are you choosing to move forward? Class of 2022, this is your year! Every Senior in your seat at Graduation on May 28 at 9:00 AM.

Looking forward to a productive and meaningful 2021-2022 school year!

**Lauren Myers**  
Principal





***For Success, Choose the Best!***

**Vicki S. Anderson, Licensed Real Estate Broker**  
Vice President, Okeechobee Board of Realtors

**Eric Anderson**  
Licensed Real Estate Broker

**(863) 634-4106 | [Vic\\_Anderson@earthlink.net](mailto:Vic_Anderson@earthlink.net)**

**(863) 634-4107**



**Your Top Realty Company in Okeechobee**  
**Your Family Can Trust to be There for You!**

*Anderson Realty Co. is seasoned at aiding new and experienced buyers and sellers in all areas of real estate. Contact us if your needs include a real estate pro experienced at the business side of real estate!*

**30046 E SR 78 — Buckhead Ridge**  
**Okeechobee, FL 34974**

**For All Of Our Listings, Please Visit Our Website:**  
**[www.AndersonRealtyCo.com](http://www.AndersonRealtyCo.com)**

**Shelly Doyle**  
Personal Assistant  
**(863) 801-8463**  
[shellydoyle@ymail.com](mailto:shellydoyle@ymail.com)



## OAA encourages and supports students to excel

I would like to welcome back all of our students, parents, teachers, and staff to the 2021-2022 school year. Our new and returning faculty are excited for their students to return. Our teachers will be focused on engaging and motivating students, knowing individual student needs, and fostering academic and social success. OAA has a strong foundation in Positive Behavioral Interventions and Support (PBIS), earning a silver rating last school year. Through PBIS as well as partnerships with community and mental health organizations, we will continue to encourage and support our students to excel in the classroom and to succeed in the community.

We are excited to continue our acceleration programs: REACH, GAP, and Night School. In its first year, our REACH program helped many middle and high school

students avoid retention and catch up with their cohort. The GAP program built on its success from last school year, increasing the number of early graduates from 37 to 64 while also achieving a 96% graduation rate. We expanded our partnership with OHS and opened the Night School in March, and we look forward to inviting more students who need to graduate but have circumstances hindering their attendance during the normal school day.

The faculty and staff at OAA will work diligently to know and grow your students. Your support, parents and guardians, is crucial to the academic process. Please encourage your student to come to school every day ready to be productive and successful. Daily, on-time attendance and open communication between teachers and parents are

essential to building a relationship that results in student achievement. With your cooperation, we will make strides this year.

Please join us for Open House on Thursday, August 5th from 6:00-8:00 PM. Our teachers and staff look forward to meeting you and welcoming you to our school. The first day of school is Tuesday, August 10th. Thank you for giving us the opportunity to work with your students and help them achieve their academic and personal goals.

Sincerely,  
**Bryan Van Camp**, Principal  
Okeechobee  
Achievement Academy



# FALL FOOTBALL **PREVIEW**

## REGIONAL HIGH SCHOOL FOOTBALL KICK-OFF

LOOK FOR IT IN THE 8/25 LAKE OKEECHOBEE NEWS OR ONLINE  
AT [SOUTHCENTRALFLORIDALIFE.COM/SPECIALSECTIONS](https://southcentralfloridalife.com/specialsections)





## Okeechobee Freshman Campus welcomes Class of 2025!

**P**arents, Students, and Community Stakeholders, Okeechobee High School Freshman Campus is excited to welcome the Okeechobee High School Class of 2025! The transition from middle school to high school is a pivotal year for students as they adjust to a new school, a new set of peers, and new teachers all at once. Add on the expectations of being a “high school” student and it becomes easy to see how for many students freshman year can be their toughest year of high school. However, be assured the faculty and staff at Okeechobee High School Freshman Campus are working to ensure that our students are successful by setting an academic foundation that is solid and will carry our students on to Okeechobee High School and beyond.

Much has been said and written recently about providing equity and access for all students. At OHS Freshman Campus, all students will take Pre-AP English 1.

The Pre-AP designation for a course signals high standards in courses that help build, strengthen, and reinforce students’ content knowledge

and critical thinking skills. Pre-AP is a program designed to achieve results for all students by providing access and equity to all students. Students will benefit from instruction that focuses on building important foundational skills and confidence. Students will learn to apply evidence and think critically. Within these courses students will learn to observe closely before starting to explain or analyze. Students will be asked to respond to questions that challenge them to think critically.

They will share their learning through discussions with peers and write using evidence from text and other sources. Our English 1 teachers are prepared to deliver lessons based on the principles of close observation and analysis, evidence-based writing, higher-order questioning, and academic conversation.

The focus on these shared principles will allow our students to see connections across the disciplines as they move throughout the day, benefiting students in all classes. These common instructional practices will become the basis of a change in how our students learn, reflect, and share with others. As students

leave Okeechobee High School Freshman Campus, they will be prepared for the full range of academic options, including Honors, Advanced Placement, and Dual Enrollment, available to them at Okeechobee High School.

While we cannot control all elements in a school environment, please know that we will have systems and procedures in place to prioritize the safety of our students and staff. We are excited to return to our new normal and to see students’ smiles on August 10th. It is time to teach our freshman class The Brahman Way. It is time to Move Forward and Be Great!

Sincerely,  
**Vicki Goggans**  
Principal  
OFC





## BUS SCHEDULE

### 01 OHS AM

<u>TIME</u>	<u>LOCATION</u>
6:07 am	SE 126th Blvd & Box 9357
6:13 am	441 SE & Douglas Turnaround
6:13 am	441 SE & Box 13895
6:16 am	441 SE & SE 118th Terr
6:18 am	441 SE & Box 11486
6:19 am	10366 US Hwy 441 SE
6:21 am	441 SE & SE 88th Blvd
6:22 am	441 SE & Box 5940
6:25 am	441 SE & Box 5320
6:28 am	441 SE & SE 50th Ave
6:29 am	441 SE & SE 42nd Pl
6:30 am	441 SE & Btwn SE 35th & 36th Ave
6:31 am	441 SE & SE 33rd Ter (HWY 441 SE)

### 01 OHS PM

<u>TIME</u>	<u>LOCATION</u>
2:18 pm	441 SE & SE 33rd Ter (HWY 441 SE)
2:19 pm	441 SE & Btwn SE 35th & 36th Ave
2:20 pm	441 SE & SE 42nd Pl
2:21 pm	441 SE & SE 50th Ave
2:22 pm	441 SE & Box 5320
2:23 pm	441 SE & Box 5940
2:27 pm	441 SE & SE 88th Blvd
2:30 pm	10366 US Hwy 441 SE
2:31 pm	441 SE & Box 11486
2:32 pm	441 SE & SE 118th Terr
2:36 pm	441 SE & Douglas Turnaround
2:37 pm	441 SE & Box 13895
2:43 pm	SE 126th Blvd & Box 9357

### 02 OHS AM

<u>TIME</u>	<u>LOCATION</u>
6:14 am	NW 56th St & NW 149th Ter
6:15 am	NW 56th St & NW 154th Ave
6:28 am	NW 36th Ter & NW 4th St
6:30 am	NW 3rd St & btwn 32nd Ave & 34th Ter

### 02 OHS PM

<u>TIME</u>	<u>LOCATION</u>
2:19 pm	NW 3rd St & Btwn 32nd Ave & 34th Ter
2:20 pm	NW 36th Ter & NW 4th St
2:48 pm	NW 56th St & NW 149th Ter
2:49 pm	NW 56th St & NW 154th Ave

### 05 OHS AM

<u>TIME</u>	<u>LOCATION</u>
6:27 am	SE 18th Ter & SE 38th Trl
6:28 am	SE 18th Ter & SE 34th Ln
6:29 am	SE 18th Ter & SE 30th St
6:31 am	SE 24th Blvd & SE 19th Terr
6:33 am	SE 27th Ave & SE 25th Dr
6:35 am	SE 27th Ave & SE 27th St
6:39 am	Charles Harvey Blvd & Palm Creek Ent

### 05 OHS PM

<u>TIME</u>	<u>LOCATION</u>
2:24 pm	SE 18th Ter & SE 38th Trl
2:25 pm	SE 18th Ter & SE 34th Ln
2:26 pm	SE 18th Ter & SE 30th St
2:27 pm	SE 24th Blvd & SE 19th Terr
2:30 pm	SE 27th Ave & SE 25th Dr
2:30 pm	SE 27th Ave & SE 27th St
2:35 pm	Charles Harvey Blvd & Palm Creek Ent

### 06 OHS AM

<u>TIME</u>	<u>LOCATION</u>
5:38 am	NW 160th Dr & NW 214th Cir
5:40 am	NW 160th Dr & NW 203rd Ave
6:04 am	NW 144th Trl & NW 96th St
6:07 am	NW 189th Ave & NW 83rd Trl
6:08 am	NW 144th Trl & Box 9036
6:17 am	NW 160th St & NW 144th Ave
6:24 am	Bishop Dairy & 98 N
6:36 am	NW 36th St & NW 33rd Ave

### 06 OHS PM

<u>TIME</u>	<u>LOCATION</u>
2:16 pm	NW 36th St & NW 33rd Ave
2:28 pm	Bishop Dairy & 98 N
2:31 pm	NW 160th St & NW 144th Ave
3:00 pm	NW 144th Trl & Box 9036
3:01 pm	NW 189th Ave & NW 83rd Trl
3:06 pm	NW 144th Trl & NW 96th St
3:18 pm	NW 160th Dr & NW 203rd Ave
3:22 pm	NW 160th Dr & NW 214th Cir





## BUS SCHEDULE

### 07 OHS AM

<u>TIME</u>	<u>LOCATION</u>
6:00 am	70 E & Gracewood Service Rd
6:08 am	NE 128th Ave & NE 79th Dr
6:10 am	NE 128th Ave & NE 101st St
6:11 am	NE 120th St & NE 124th Ave
6:12 am	NE 120th St & Box 11800
6:16 am	NE 120th St & Box 7480
6:19 am	NE 120th St & Box 6790
6:22 am	NE 120th St & Box 6175
6:29 am	NE 144th St & Box 2050
6:32 am	NE 131st Ln & NE 26th Ave
6:33 am	NE 131st Ln & NE 22nd Ave
6:34 am	NE 131st Ln & NE 18th Ave

### 10 OHS AM

<u>TIME</u>	<u>LOCATION</u>
6:05 am	NW 115th Dr & NW 2nd Ter
6:06 am	NW 115th Dr & NW 3rd Cir
6:08 am	NE 110th St & NE 1st Way
6:10 am	NW 110th St & NW 8th Ave
6:12 am	NW 8th Ave & 50' before NW 106th St
6:13 am	NW 8th Ave & 50' before NW 102nd St
6:14 am	NW 8th Ave & NW 98th St
6:15 am	Center Ave & 50' before NE 98th St
6:16 am	NW 102nd St & Center Ave
6:26 am	NE 59th Ct & NE 60th Ct
6:28 am	NE 54th Way & NE 59th Ct
6:30 am	NE 54th Trl & NE 67th Pkwy
6:31 am	NE 54th Trl & NE 56th Pkwy
6:32 am	NE 54th Trl & NE 52nd Dr
6:33 am	NE 54th Trl & Box 2660

### 14 OHS AM

<u>TIME</u>	<u>LOCATION</u>
6:12 am	NW 46th Ave & Box 2113
6:13 am	NW 46th Ave & Villas
6:15 am	NW 30th St & Box 4878
6:19 am	NW 30th St & NW 74th Ter
6:21 am	NW 30th St & Box 6552
6:22 am	NW 30th St & Box 6000
6:24 am	NW 24th St & Box 5700
6:25 am	NW 24th St & NW 63rd Ter
6:29 am	NW 30th St & NW 42nd Ave

### 07 OHS PM

<u>TIME</u>	<u>LOCATION</u>
2:20 pm	NE 131st Ln & NE 18th Ave
2:21 pm	NE 131st Ln & NE 22nd Ave
2:22 pm	NE 131st Ln & NE 26th Ave
2:26 pm	NE 144th St & Box 2050
2:35 pm	NE 120th St & Box 6175
2:37 pm	NE 120th St & Box 6790
2:37 pm	NE 120th St & Box 7480
2:42 pm	NE 120th St & Box 11800
2:43 pm	NE 120th St & NE 124th Ave
2:46 pm	NE 128th Ave & NE 101st St
2:48 pm	NE 128th Ave & NE 79th Dr
2:52 pm	70 E & Gracewood Service Rd

### 10 OHS PM

<u>TIME</u>	<u>LOCATION</u>
2:18 pm	NE 54th Trl & Box 2660
2:19 pm	NE 54th Trl & NE 52nd Dr
2:20 pm	NE 54th Trl & NE 56th Pkwy
2:21 pm	NE 54th Trl & NE 67th Pkwy
2:23 pm	NE 54th Way & NE 59th Ct
2:24 pm	NE 59th Ct & NE 60th Ct
2:38 pm	NW 115th Dr & NW 2nd Ter
2:40 pm	NW 115th Dr & NW 3rd Cir
2:42 pm	NE 110th St & NE 1st Way
2:44 pm	NW 110th St & NW 8th Ave
2:45 pm	NW 8th Ave & 50' before NW 106th St
2:46 pm	NW 8th Ave & 50' before NW 102nd St
2:47 pm	NW 8th Ave & NW 98th St
2:49 pm	Center Ave & 50' before NE 98th St
2:50 pm	NW 102nd St & Center Ave

### 14 OHS PM

<u>TIME</u>	<u>LOCATION</u>
2:21 pm	NW 46th Ave & Box 2113
2:22 pm	NW 46th Ave & Villas
2:24 pm	NW 30th St & Box 4878
2:28 pm	NW 30th St & NW 74th Ter
2:29 pm	NW 30th St & Box 6552
2:30 pm	NW 30th St & Box 6000
2:34 pm	NW 24th St & Box 5700
2:35 pm	NW 24th St & NW 63rd Ter
2:40 pm	NW 30th St & NW 42nd Ave



## BUS SCHEDULE

### 15 OHS AM

<u>TIME</u>	<u>LOCATION</u>
6:31 am	NW 6th St & NW 2nd Ave
6:34 am	NW 18th Ave & NW 6th St
6:35 am	NW 11th Ave & NW 5th St
6:36 am	NW 10th Ave & NW 3rd St

### 15 OHS PM

<u>TIME</u>	<u>LOCATION</u>
2:14 pm	NW 6th St & NW 2nd Ave
2:17 pm	NW 18th Ave & NW 6th St
2:18 pm	NW 11th Ave & NW 5th St
2:19 pm	NW 10th Ave & NW 3rd St

### 16 OHS AM

<u>TIME</u>	<u>LOCATION</u>
5:55 am	NE 128th Ave & NE 27th Dr
5:56 am	NE 128th Ave & NE 25th St
5:57 am	NE 128th Ave & NE 20th Ct
5:59 am	NE 128th Ave & Box 1111
6:01 am	SE 128th Ave & Box 800
6:03 am	SE 132nd Ave & SE 34th St
6:07 am	SE 138th Ave & SE 46th St
6:09 am	SE 46th St & Box 12913
6:12 am	SE 128th Ave & Box 4951
6:13 am	SE 128th Ave & Box 7315
6:24 am	SE 37th Ter & SE 6th St
6:26 am	SE 8th St & SE 38th Ter
6:27 am	SE 10th St & SE 40th Ave

### 16 OHS PM

<u>TIME</u>	<u>LOCATION</u>
2:23 pm	SE 37th Ter & SE 6th St
2:24 pm	SE 8th St & SE 38th Ter
2:25 pm	SE 10th St & SE 40th Ave
2:37 pm	NE 128th Ave & NE 27th Dr
2:38 pm	NE 128th Ave & NE 25th St
2:39 pm	NE 128th Ave & NE 20th Ct
2:40 pm	NE 128th Ave & Box 1111
2:42 pm	SE 128th Ave & Box 800
2:44 pm	SE 132nd Ave & SE 34th St
2:48 pm	SE 138th Ave & SE 46th St
2:50 pm	SE 46th St & Box 12913
2:52 pm	SE 128th Ave & Box 4951
2:54 pm	SE 128th Ave & Box 7315

### 17 OHS AM

<u>TIME</u>	<u>LOCATION</u>
5:57 am	441 SE & SE 87th Blvd
5:59 am	SE 87th Blvd & SE 66th Dr
6:00 am	SE 87th Trl & SE 68th Dr
6:02 am	SE 57th Dr & SE 89th Ter
6:04 am	SE 57th Dr & SE 81st Cir
6:06 am	SE 60th Dr & SE 80th Trl
6:14 am	710 E & SE 28th St
6:17 am	SE 30th Pkwy & Box 5506
6:19 am	SE 30th Pkwy & Box 6432

### 17 OHS PM

<u>TIME</u>	<u>LOCATION</u>
2:33 pm	441 SE & SE 87th Blvd
2:34 pm	SE 87th Blvd & SE 66th Dr
2:35 pm	SE 87th Trl & SE 68th Dr
2:38 pm	SE 57th Dr & SE 89th Ter
2:41 pm	SE 57th Dr & SE 81st Cir
2:42 pm	SE 60th Dr & SE 80th Trl
2:48 pm	710 E & SE 28th St
2:53 pm	SE 30th Pkwy & Box 6432
2:54 pm	SE 30th Pkwy & Box 5506

### 18 OHS AM

<u>TIME</u>	<u>LOCATION</u>
6:15 am	SW 28th St & Oak Lake Villas
6:16 am	SW 24th Ave & SW 33rd Cir
6:18 am	SW 24th Ave & SW 24th Ln
6:19 am	SW 24th Ave & SW 21st St
6:21 am	SW 24th Ave & SW 9th Ln
6:25 am	70 W & Box 3333
6:26 am	NW 1st St & Box 3725
6:31 am	SW 11th Ave & SW 5th St

### 18 OHS PM

<u>TIME</u>	<u>LOCATION</u>
2:18 pm	70 W & Box 3333
2:19 pm	NW 1st St & Box 3725
2:23 pm	SW 11th Ave & SW 5th St
2:26 pm	SW 24th Ave & SW 9th Ln
2:28 pm	SW 24th Ave & SW 21st St
2:29 pm	SW 24th Ave & SW 24th Ln
2:31 pm	SW 24th Ave & SW 33rd Cir
2:32 pm	SW 28th St & Oak Lake Villas





## BUS SCHEDULE

### 19 OHS AM

<u>TIME</u>	<u>LOCATION</u>
6:15 am	BHR Community Center
6:17 am	78 W & Box 9340
6:18 am	78 W & Box 8825
6:22 am	78 W & Box 7650
6:27 am	SW 39th Ln & SW 13th Way
6:31 am	SW 25th St & SW 3rd Ave
6:35 am	SW 10 Dr & SW 14th St
6:36 am	SW 11th Ave & SW 9th St

### 20 OHS AM

<u>TIME</u>	<u>LOCATION</u>
6:00 am	SW 21st Pkwy & SW 69th Ter
6:01 am	SW 21st Pkwy & Box 7611
6:05 am	SW 13th St & Box 7664
6:13 am	6725 SW 9th St
6:15 am	SW 9th St & SW 85th Way
6:17 am	SW 87th Ter & SW 5th Ln
6:18 am	SW 2nd St & Box 8552
6:20 am	70 W & SW 72nd Ter
6:25 am	SW 16th St & SW 40th Dr
6:26 am	SW 34th Ter & SW 18th St
6:27 am	SW 34th Ter & SW 22nd St
6:28 am	SW 16th St & SW 28th Ave
6:30 am	SW 16th St & SW 22nd Ter
6:31 am	SW 16th St & SW 19th Ter

### 21 OHS AM

<u>TIME</u>	<u>LOCATION</u>
6:15 am	NE 14th Ave & NE 10th St
6:17 am	NE 16th Ave & NE 15th St
6:19 am	NE 16th Ave & NE 8th St
6:21 am	NE 17th Ave & NE 3rd St
6:25 am	SR 70 & River Run

### 21 OHS AM

<u>TIME</u>	<u>LOCATION</u>
2:17 pm	NE 16th Ave & NE 15th St
2:19 pm	NE 14th Ave & NE 10th St
2:20 pm	NE 16th Ave & NE 8th St
2:22 pm	NE 17th Ave & NE 3rd St
2:25 pm	SR 70 & River Run

### 19 OHS PM

<u>TIME</u>	<u>LOCATION</u>
2:21 pm	SW 11th Ave & SW 9th St
2:23 pm	SW 10 Dr & SW 14th St
2:27 pm	SW 25th St & SW 3rd Ave
2:33 pm	SW 39th Ln & SW 13th Way
2:40 pm	78 W & Box 7650
2:42 pm	78 W & Box 8825
2:43 pm	78 W & Box 9340
2:49 pm	BHR Community Center

### 20 OHS PM

<u>TIME</u>	<u>LOCATION</u>
2:21 pm	SW 16th St & SW 19th Ter
2:21 pm	SW 16th St & SW 22nd Ter
2:22 pm	SW 16th St & SW 28th Ave
2:24 pm	SW 34th Ter & SW 18th St
2:25 pm	SW 34th Ter & SW 22nd St
2:28 pm	SW 16th St & SW 40th Dr
2:34 pm	SW 13th St & Box 7664
2:39 pm	SW 21st Pkwy & SW 69th Ter
2:41 pm	SW 21st Pkwy & Box 7611
2:45 pm	6725 SW 9th St
2:48 pm	SW 9th St & SW 85th Way
2:50 pm	SW 87th Ter & SW 5th Ln
2:51 pm	SW 2nd St & Box 8552
2:53 pm	70 W & SW 72nd Ter

### 24 OHS AM

<u>TIME</u>	<u>LOCATION</u>
6:12 am	NW 32nd Ave & NW 175th Ct
6:13 am	NW 32nd Ave & NW 168th Ct
6:18 am	NW 160th St & Box 3453
6:20 am	NW 38th Ave & NW 167th Ct
6:25 am	NW 144th Dr & NW 9th Ave
6:30 am	441 N & NE 131st Ln

### 24 OHS PM

<u>TIME</u>	<u>LOCATION</u>
2:30 pm	NW 32nd Ave & NW 175th Ct
2:32 pm	NW 32nd Ave & NW 168th Ct
2:35 pm	NW 160th St & Box 3453
2:36 pm	NW 38th Ave & NW 167th Ct
2:45 pm	NW 144th Dr & NW 9th Ave
2:49 pm	441 N & NE 131st Ln



## BUS SCHEDULE

### 25 OHS AM

<u>TIME</u>	<u>LOCATION</u>
6:16 am	NE 8th St & NE 31st Ter
6:19 am	NE 8th St & NE 28th Ter
6:26 am	SE 16th Ave & SE 4th St
6:28 am	SE 16th Ave & SE 6th Ln
6:30 am	SE 13th Ave & SE 8th St

### 25 OHS PM

<u>TIME</u>	<u>LOCATION</u>
2:18 pm	SE 13th Ave & SE 8th St
2:20 pm	SE 16th Ave & SE 6th Ln
2:20 pm	SE 16th Ave & SE 4th St
2:25 pm	NE 8th St & NE 31st Ter
2:26 pm	NE 8th St & NE 28th Ter

### 26 OHS AM

<u>TIME</u>	<u>LOCATION</u>
5:57 am	NW 144th Ave & NW 304th St
6:02 am	NW 144th Ave & NW 280th St
6:03 am	NW 144th Ave & NW 272nd St
6:04 am	NW 144th Ave & NW 264th St
6:06 am	NW 144th Ave & NW 256th St
6:07 am	NW 144th Ave & NW 248th St
6:08 am	NW 144th Ave & 100' before NW 240th St
6:10 am	NW 240th St & Box 12600
6:14 am	NW 240th St & NW 72nd Ave
6:16 am	NW 240th St & Box 5252
6:27 am	441 N & MAC 3 (207)
6:32 am	441 N & MAC 1 (18000)
6:37 am	441 N & NE 120th St

### 26 OHS PM

<u>TIME</u>	<u>LOCATION</u>
2:17 pm	441 N & NE 120th St
2:22 pm	441 N & MAC 1 (18000)
2:24 pm	441 N & MAC 3 (207)
2:36 pm	NW 240th St & Box 5252
2:40 pm	NW 240th St & NW 72nd Ave
2:49 pm	NW 240th St & Box 12600
2:52 pm	NW 144th Ave & 100' before NW 240th St
2:53 pm	NW 144th Ave & NW 248th St
2:55 pm	NW 144th Ave & NW 256th St
2:57 pm	NW 144th Ave & NW 264th St
2:59 pm	NW 144th Ave & NW 272nd St
3:01 pm	NW 144th Ave & NW 280th St
3:06 pm	NW 144th Ave & NW 304th St

### 27 OHS AM

<u>TIME</u>	<u>LOCATION</u>
6:09 am	441 S & Box 4425
6:16 am	441 SE & SE 14th Ter
6:20 am	441 SE & Box 833
6:27 am	441 S & Town Center Apt
6:31 am	SE 4th Ave & SE 4th St

### 27 OHS AM

<u>TIME</u>	<u>LOCATION</u>
2:21 pm	441 S & Box 4425
2:23 pm	441 SE & SE 14th Ter
2:25 pm	441 SE & Box 833
2:28 pm	441 S & Town Center Apt
2:31 pm	SE 4th Ave & SE 4th St

### 28 OHS AM

<u>TIME</u>	<u>LOCATION</u>
6:05 am	70 E & NE 31st Ter
6:08 am	70 E & NE 56th Ave
6:12 am	NE 80th Ave & NE 16th St
6:13 am	NE 80th Ave & Box 1355
6:15 am	NE 80th Ave & NE 8th Dr
6:18 am	SE 80th Ave & Box 256
6:21 am	SE 8th St & SE 68th Ave
6:24 am	SE 60th Ave & Box 252
6:25 am	NE 60th Ave & NE 2nd St
6:27 am	NE 60th Ave & NE 4th Ln
6:28 am	NE 60th Ave & NE 8th Way

### 28 OHS PM

<u>TIME</u>	<u>LOCATION</u>
2:22 pm	70 E & NE 31st Ter
2:29 pm	70 E & NE 56th Ave
2:32 pm	NE 80th Ave & NE 16th St
2:32 pm	NE 80th Ave & Box 1355
2:35 pm	NE 80th Ave & NE 8th Dr
2:37 pm	SE 80th Ave & Box 256
2:40 pm	SE 8th St & SE 68th Ave
2:43 pm	SE 60th Ave & Box 252
2:44 pm	NE 60th Ave & NE 2nd St
2:45 pm	NE 60th Ave & NE 4th Ln
2:46 pm	NE 60th Ave & NE 8th Way



## BUS SCHEDULE

### 29 OHS AM

<u>TIME</u>	<u>LOCATION</u>
5:55 am	NW 192nd Ave & NW 320th St
5:56 am	NW 192nd Ave & NW 304th St
5:58 am	NW 192nd Ave & NW 288th St
5:59 am	NW 192nd Ave & NW 280th St
6:00 am	NW 192nd Ave & NW 272nd St
6:02 am	NW 192nd Ave & NW 256th St
6:04 am	NW 192nd Ave & 50' before NW 240th St
6:10 am	NW 176th Ave & NW 208th St
6:12 am	NW 176th Ave & NW 203rd St
6:15 am	NW 176th Ave & NW 190th Rd
6:17 am	NW 176th Ave & Box 16980
6:34 am	NW 36th St & NW 38th Ave

### 31 OHS AM

<u>TIME</u>	<u>LOCATION</u>
5:57 am	NE 96th Ave & Box 1424
6:02 am	NE 16th St & Box 10009
6:05 am	70 E & Box 11600
6:10 am	70 E & NE Goodbread Ranch
6:11 am	NE 122nd Dr & NE 51st Ct
6:25 am	NE 103rd Ave & NE 28th Ln
6:26 am	NE 103rd Ave & NE 23rd Ln
6:28 am	NE 103rd Ave & NE 17th Ln
6:30 am	NE 103rd Ave & NE 11th Ct
6:31 am	NE 103rd Ave & NE 106th Ct
6:41 am	70 E & NE 71st Ave
6:42 am	70 E & NE 64th Dr

### 32 OHS AM

<u>TIME</u>	<u>LOCATION</u>
6:12 am	NE 80th Ave & NE 37th St
6:17 am	NE 64th Ave & NE 1st St
6:19 am	NE 1st St & NE 70th Ave
6:22 am	NE 70th Ave & NE 5th St
6:24 am	NE 70th Ave & NE 11th St
6:28 am	70 E & NE 24th Ave

### 29 OHS PM

<u>TIME</u>	<u>LOCATION</u>
2:17 pm	NW 36th St & NW 38th Ave
2:34 pm	NW 176th Ave & Box 16980
2:38 pm	NW 176th Ave & NW 190th Rd
2:40 pm	NW 176th Ave & NW 203rd St
2:41 pm	NW 176th Ave & NW 208th St
2:49 pm	NW 192nd Ave & 50' before NW 240th St
2:53 pm	NW 192nd Ave & NW 256th St
2:56 pm	NW 192nd Ave & NW 272nd St
3:00 pm	NW 192nd Ave & NW 280th St
3:01 pm	NW 192nd Ave & NW 288th St
3:05 pm	NW 192nd Ave & NW 304th St
3:09 pm	NW 192nd Ave & NW 320th St

### 31 OHS PM

<u>TIME</u>	<u>LOCATION</u>
2:34 pm	NE 96th Ave & Box 1424
2:35 pm	NE 16th St & Box 10009
2:41 pm	70 E & Box 11600
2:43 pm	70 E & NE Goodbread Ranch
2:45 pm	NE 122nd Dr & NE 51st Ct
2:50 pm	NE 103rd Ave & NE 28th Ln
2:51 pm	NE 103rd Ave & NE 23rd Ln
2:53 pm	NE 103rd Ave & NE 17th Ln
2:54 pm	NE 103rd Ave & NE 11th Ct
2:55 pm	NE 103rd Ave & NE 106th Ct
3:06 pm	70 E & NE 71st Ave
3:07 pm	70 E & NE 64th Dr

### 32 OHS PM

<u>TIME</u>	<u>LOCATION</u>
2:24 pm	NE 64th Ave & NE 1st St
2:25 pm	NE 1st St & NE 70th Ave
2:26 pm	NE 70th Ave & NE 5th St
2:28 pm	NE 70th Ave & NE 11th St
2:33 pm	NE 80th Ave & NE 37th St
2:41 pm	70 E & NE 24th Ave





## BUS SCHEDULE

### 33 OHS AM

<u>TIME</u>	<u>LOCATION</u>
5:50 am	441 N & NE 290th Trl
5:52 am	441 N & NE 308th St
5:53 am	441 N & Box 31100
5:57 am	NE 342nd Trl & NE 4th Dr
5:58 am	NE 342nd Trl & NE 356th Ct
6:06 am	NW 392nd St & NW 24th Dr
6:12 am	NW 344th St & NW 25th Ave
6:15 am	NW 344th St & NW 21st Ave
6:20 am	441 N & NE 325th Trl
6:30 am	NE 168th St & Fire Station

### 35 OHS AM

<u>TIME</u>	<u>LOCATION</u>
6:26 am	SE 8th Ave & SE 3rd St
6:28 am	SE 8th Dr & SE 10th St
6:31 am	SE 9th Ave & SE 15th Ct
6:33 am	SE 21st St & SE 9th Ave
6:37 am	SE 10th Ave & SE 6th St
6:38 am	SE 10th Ave & JW Mobile Home
6:43 am	NE 4th St & NE 4th Ave

### 36 OHS AM

<u>TIME</u>	<u>LOCATION</u>
6:28 am	70 W & Box 1659
6:30 am	98 N & NW 3rd Ln
6:33 am	NW 22nd Ave & NW 4th St
6:34 am	NW 26th Ave & NW 6th St
6:35 am	NW 28th Ave & NW 1st St

### 33 OHS PM

<u>TIME</u>	<u>LOCATION</u>
2:21 pm	NE 168th St & Fire Station
2:29 pm	441 N & NE 290th Trl
2:31 pm	441 N & NE 308th St
2:31 pm	441 N & Box 31100
2:33 pm	441 N & NE 325th Trl
2:36 pm	NE 342nd Trl & NE 4th Dr
2:38 pm	NE 342nd Trl & NE 356th Ct
2:47 pm	NW 392nd St & NW 24th Dr
2:57 pm	NW 344th St & NW 25th Ave
2:58 pm	NW 344th St & NW 21st Ave

### 35 OHS PM

<u>TIME</u>	<u>LOCATION</u>
2:17 pm	SE 8th Ave & SE 3rd St
2:19 pm	SE 8th Dr & SE 10th St
2:22 pm	SE 21st St & SE 9th Ave
2:23 pm	SE 9th Ave & SE 15th Ct
2:26 pm	SE 10th Ave & SE 6th St
2:27 pm	SE 10th Ave & JW Mobile Home
2:29 pm	NE 4th St & NE 4th Ave

### 36 OHS PM

<u>TIME</u>	<u>LOCATION</u>
2:17 pm	70 W & Box 1659
2:19 pm	98 N & NW 3rd Ln
2:19 pm	NW 22nd Ave & NW 4th St
2:21 pm	NW 26th Ave & NW 6th St
2:23 pm	NW 28th Ave & NW 1st St



## BUS SCHEDULE

### 39 OHS AM

<u>TIME</u>	<u>LOCATION</u>
6:19 am	NW 36th St & NW 28th Ave
6:20 am	NW 36th St & NW 23rd Ave

### 39 OHS PM

<u>TIME</u>	<u>LOCATION</u>
2:15 pm	NW 36th St & NW 23rd Ave
2:16 pm	NW 36th St & NW 28th Ave

### 41 OHS AM

<u>TIME</u>	<u>LOCATION</u>
6:23 am	98 N & Box 2319
6:25 am	NW 18th St & NW 38th Ave
6:26 am	NW 18th St & NW 42nd Ave
6:27 am	NW 18th St & NW 45th Ter
6:36 am	NW 36th St & NW 18th Ave

### 41 OHS PM

<u>TIME</u>	<u>LOCATION</u>
2:14 pm	NW 36th St & NW 18th Ave
2:19 pm	98 N & Box 2319
2:22 pm	NW 18th St & NW 38th Ave
2:23 pm	NW 18th St & NW 42nd Ave
2:24 pm	NW 18th St & NW 45th Ter

### 42 OHS PM

<u>TIME</u>	<u>LOCATION</u>
2:26 pm	SE 34th Ave & Box 3337
2:28 pm	SE 28th St & SE 35th Ave
2:29 pm	SE 28th St & SE 37th Ave
2:29 pm	SE 28th St & SE 39th Ave
2:30 pm	SE 28th St & SE 44th Ave
2:31 pm	SE 43 Ave & SE 27th St
2:32 pm	SE 26th St & Box 4003
2:33 pm	SE 26th St & SE 34th Dr
2:38 pm	SE 38th Ave & Box 3500

### 42 OHS AM

<u>TIME</u>	<u>LOCATION</u>
6:08 am	SE 34th Ave & Box 3337
6:09 am	SE 28th St & SE 35th Ave
6:10 am	SE 28th St & SE 37th Ave
6:11 am	SE 28th St & SE 39th Ave
6:12 am	SE 28th St & SE 44th Ave
6:15 am	SE 26th St & Box 4003
6:16 am	SE 26th St & SE 34th Dr
6:18 am	SE 43 Ave & SE 27th St
6:21 am	SE 38th Ave & Box 3500

### Parents, review these safety tips with your kids to help prevent the spread of COVID-19 at school:

- Wear a mask over your mouth and nose.
- Hold off on hugging classmates, getting too close or sharing food.
- Hum or sing the entire "Happy Birthday" song when washing your hands to make sure you're getting them clean.
- Carry hand sanitizer for when you can't wash your hands, and use sanitizing wipes on surfaces you touch a lot, like your desk.

### Also, Parents...

Make sure children are up to date on routine immunizations, and keep kids at home if they are feeling sick, coughing or running a fever.

Check in with children often and encourage them to express their feelings about going back to school and the COVID-19 pandemic. If you have concerns or questions about your child's mental, behavioral or physical health, don't hesitate to contact your pediatrician.



## BUS SCHEDULE

### 50 OHS AM

<u>TIME</u>	<u>LOCATION</u>
5:45 am	NE 224th St & LARSON 3 (68 East)
5:46 am	NE 224th St & Box 4800
5:49 am	NE 224th St & Box 5620
5:55 am	NE 48th Ave & Box 22810
5:57 am	NE 48TH Ave & Box 27000
5:59 am	NE 48th Ave & Box 28630
6:01 am	NE 304th St & NE 55th Ave
6:03 am	NE 304th St & NE 69th Ter
6:05 am	NE 304th St & End of Pavement
6:10 am	NE 301st Blvd & Box 3255
6:25 am	441 N & MAC 4 (17000)

### 51 OHS AM

<u>TIME</u>	<u>LOCATION</u>
6:09 am	SE 40th Ave & SE 22nd Ct

### 52 OHS AM

<u>TIME</u>	<u>LOCATION</u>
6:13 am	NE 64th Ave & NE 8th Way
6:15 am	NE 64th Ave & NE 10th Ln
6:17 am	NE 62nd Ave & NE 9th Way
6:18 am	NE 62nd Ave & NE 5th St
6:22 am	70 E & NE 55th Trl

### 50 OHS PM

<u>TIME</u>	<u>LOCATION</u>
2:28 pm	441 N & MAC 4 (17000)
2:35 pm	NE 224th St & LARSON 3 (68 East)
2:36 pm	NE 224th St & Box 4800
2:37 pm	NE 224th St & Box 5620
2:45 pm	NE 48th Ave & Box 22810
2:47 pm	NE 48TH Ave & Box 27000
2:49 pm	NE 48th Ave & Box 28630
2:50 pm	NE 304th St & NE 55th Ave
2:54 pm	NE 304th St & NE 69th Ter
2:58 pm	NE 304th St & End of Pavement
3:12 pm	NE 301st Blvd & Box 3255

### 51 OHS PM

<u>TIME</u>	<u>LOCATION</u>
2:30 pm	SE 40th Ave & SE 22nd Ct

### 52 OHS PM

<u>TIME</u>	<u>LOCATION</u>
2:42 pm	NE 62nd Ave & NE 5th St
2:43 pm	NE 62nd Ave & NE 9th Way
2:44 pm	NE 64th Ave & NE 10th Ln
2:45 pm	NE 64th Ave & NE 8th Way
2:49 pm	70 E & NE 55th Trl





## BUS SCHEDULE

### 53 OHS AM

<u>TIME</u>	<u>LOCATION</u>
6:18 am	NW 80th Ave & NW 82nd Ct
6:19 am	NW 80th Ave & NW 86th Ct
6:21 am	NW 80th Ave & NW 90th Ct
6:23 am	NW 80th Ave & NW 96th Ct
6:28 am	98 N & Milking R
6:31 am	98 N & Lanier Ranch

### 54 OHS AM

<u>TIME</u>	<u>LOCATION</u>
5:58 am	Broadland Ln & Julius Ter (Kiss. River)
6:03 am	Rucks Dairy Rd & Box 2080

### 56 OHS AM

<u>TIME</u>	<u>LOCATION</u>
6:01 am	SE 57th Dr & SE 93rd Trl
6:09 am	441 SE & Box 8485
6:11 am	441 SE & Box 7777
6:14 am	441 SE & Box 6275

### 53 OHS PM

<u>TIME</u>	<u>LOCATION</u>
2:19 pm	98 N & Lanier Ranch
2:21 pm	98 N & Milking R
2:24 pm	NW 80th Ave & NW 82nd Ct
2:25 pm	NW 80th Ave & NW 86th Ct
2:27 pm	NW 80th Ave & NW 90th Ct
2:28 pm	NW 80th Ave & NW 96th Ct

### 54 OHS PM

<u>TIME</u>	<u>LOCATION</u>
2:45 pm	Broadland Ln & Julius Ter (Kiss. River)
2:55 pm	Rucks Dairy Rd & Box 2080

### 56 OHS PM

<u>TIME</u>	<u>LOCATION</u>
2:33 pm	441 SE & Box 6275
2:35 pm	441 SE & Box 7777
2:36 pm	441 SE & Box 8485
2:41 pm	SE 57th Dr & SE 93rd Trl



## Exceeding Expectations at Osceola Middle School

**T**his is Sean Downing and I am looking forward to the start of my twelfth year here at OMS as your principal. We have had a great summer and our staff has worked extra-hard to make sure that we are ready for students to return. I am proud of how our school responded to the first year back after the pandemic, and I am excited to see how we continue to heal and close learning gaps we found over that time and since. We are more committed than ever to make sure that we are here to listen to your concerns and to provide students with the absolute best education and services to ensure that ALL students can enjoy all of the benefits and realize their maximum potential. At OMS, success is ensuring we help provide a supportive and academically challenging setting that takes students in from the elementary schools and delivers them to Okeechobee Freshman Campus prepared and ready to flourish.

The faculty and staff at Osceola Middle say family a lot when interacting with our students and one another. Our top goal for the upcoming

school year is to create that school family where we all look out for one another. To that end, we want to offer more opportunities to get to know your school family, through online content, our face-to-face open house, sixth grade orientation, the OMS Town Hall School Improvement BBQ, and some of the Frequently Asked Questions for upcoming middle school parents and students, including your dress code questions. If you are interested in additional information, please email me!

I am committed to keeping you informed of what we do on our campus. If you would like to be included in my Warrior Weekly Update email, please update your email in Skyward or personally email me at [downings@okee.k12.fl.us](mailto:downings@okee.k12.fl.us) so I may include you. If you like watching from afar and would enjoy seeing pictures of the students during the multitude of activities on the campus, please "like" us on Facebook (@Osceola.Middle.Okeechobee)! We try to get something new on the Facebook page at least once a week (sometimes more often than that). Additionally, we have school information on our

website so check us out online at <http://osceolamiddleschool.sites.thedigitalbell.com/>.

As the summer winds down, let me remind you that students entering seventh grade are required to show proof of vaccinations prior to issuing a schedule/admitting a student to class. If you have a question, please call the main office at (863) 462-5070.

Additionally, fall sports tryouts happen right away when we return. Student athletes are not permitted to try out for a middle school sport until we have a completed physical form/athletic packet on file with Mr. Perman, Athletic Director.

Finally, here are some dates for you to put on your calendar:

**Thursday, August 5:** Open House (from 6:00 to 8:00 PM).

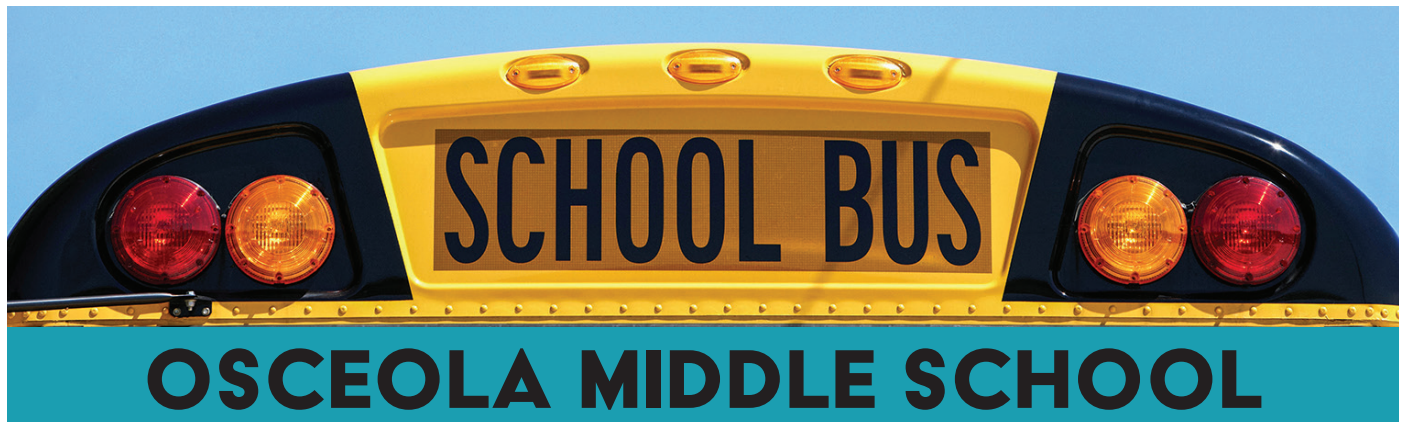
**Monday, August 10:** The first day of school for students.

**Wednesday, September 9:** Quarter 1 Progress Report Day.

**Friday, September 11:** Early Release Day.

Thank you for your continued support and trust in Osceola Middle School.





## BUS SCHEDULE

### 01 OMS AM

<u>TIME</u>	<u>LOCATION</u>
8:15 am	441 SE & Box 14141
8:16 am	SE 138th Blvd & 441 SE
8:18 am	441 SE & SE 118th Trl
8:19 am	441 SE & Box 11486
8:22 am	441 SE & SE 88th Blvd
8:23 am	441 SE & Box 8485
8:24 am	441 SE & Box 7777
8:26 am	441 SE & Box 6500
8:27 am	441 SE & Box 6070
8:28 am	441 SE & Box 5390
8:29 am	441 SE & SE 50th Ave
8:30 am	441 SE & Cypruss Hut
8:31 am	441 SE & SE 42nd Pl
8:33 am	441 SE & Box 3525

### 05 OMS AM

<u>TIME</u>	<u>LOCATION</u>
8:21 am	70 W & NW 30th Ter
8:23 am	NW 36th Ter & NW 4th St
8:25 am	NW 36th Ter & NW 7th St
8:31 am	SW 24th Ave & SW 8th St

### 07 OMS AM

<u>TIME</u>	<u>LOCATION</u>
8:18 am	SE 16th Ave & SE 2nd St
8:21 am	SE 10th Ave & SE 6th St
8:22 am	SE 10th Ave & J&W MHP
8:28 am	SE 4th Ave & SE 4th St
8:31 am	SW 7th Ave & SW 9th St
8:33 am	SW 3rd Ave & SW 10th St
8:34 am	SW 3rd Ave & SW 13th St
8:37 am	SW 19th St & SW 5th Dr

### 01 OMS PM

<u>TIME</u>	<u>LOCATION</u>
3:55 pm	441 SE & Box 3525
3:57 pm	441 SE & SE 42nd Pl
3:58 pm	441 SE & Cypruss Hut
3:58 pm	441 SE & SE 50th Ave
3:59 pm	441 SE & Box 5390
4:00 pm	441 SE & Box 6070
4:02 pm	441 SE & Box 6500
4:03 pm	441 SE & Box 7777
4:04 pm	441 SE & Box 8485
4:05 pm	441 SE & SE 88th Blvd
4:09 pm	441 SE & Box 11486
4:09 pm	441 SE & SE 118th Trl
4:13 pm	SE 138th Blvd & 441 SE
4:13 pm	441 SE & Box 14141

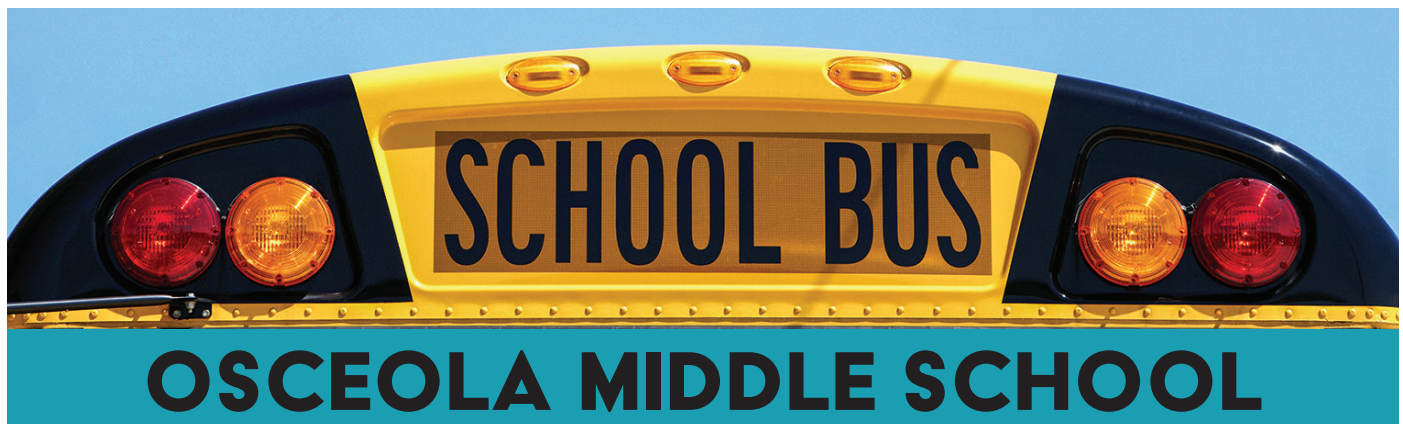
### 05 OMS PM

<u>TIME</u>	<u>LOCATION</u>
3:49 pm	70 W & NW 30th Ter
3:51 pm	NW 36th Ter & NW 4th St
3:54 pm	NW 36th Ter & NW 7th St
4:00 pm	SW 24th Ave & SW 8th St

### 07 OMS PM

<u>TIME</u>	<u>LOCATION</u>
3:44 pm	SW 19th St & SW 5th Dr
3:46 pm	SW 3rd Ave & SW 13th St
3:47 pm	SW 3rd Ave & SW 10th St
3:48 pm	SW 7th Ave & SW 9th St
3:51 pm	SE 4th Ave & SE 4th St
3:54 pm	SE 10th Ave & J&W MHP
3:55 pm	SE 10th Ave & SE 6th St
3:57 pm	SE 16th Ave & SE 2nd St





## BUS SCHEDULE

### 16 OMS AM

<u>TIME</u>	<u>LOCATION</u>
7:40 am	70 E & NE 56th Ave
7:45 am	NE 96th Ave & Box 1044
7:48 am	2358 NE 96th Ave
7:50 am	NE 103rd Ave & NE 28th Ln
7:51 am	NE 103rd Ave & NE 23rd Ln
7:53 am	NE 103rd Ave & NE 11th Ct
7:55 am	NE 106th Ct & Yellow Dead End Sign
8:01 am	NE 112th Ave & NE 32nd St
8:10 am	NE 128th Ave & NE 25th St
8:12 am	NE 128th Ave & Box 920
8:14 am	SE 128th Ave & Box 800
8:19 am	SE 34th St & SE 132nd Ave
8:22 am	SE 138th Ave & SE 46th St
8:36 am	SE 6th St & SE 37th Terr
8:38 am	SE 8th St & SE 38th Ave

### 17 OMS AM

<u>TIME</u>	<u>LOCATION</u>
8:20 am	SE 18th Ter & SE 34th Ln
8:21 am	SE 18th Ter & SE 30th St
8:23 am	SE 29th St & Box 2302
8:24 am	SE 27th St & Box 2309
8:26 am	SE 24th Blvd & SE 25th Dr
8:28 am	SE 27th Ave & SE 25th Dr
8:33 am	441 SE & SE 14th Ter
8:35 am	441 SE & SHANNON'S OAKS (833)
8:40 am	SW 2nd Ave & SW 18th St

### 18 OMS AM

<u>TIME</u>	<u>LOCATION</u>
8:14 am	SW 131st Ave & SW 16th Dr
8:26 am	SW 21st Pkwy & SW 69th Ter
8:31 am	SW 9th St & SW 85th Way
8:33 am	SW 87th Ter & SW 5th Ln
8:35 am	SW 2nd St & Box 8552
8:36 am	70 W & SW 77th Ter
8:37 am	70 W & SW 72nd Ter
8:44 am	SW 18th Ave & SW 2nd Way
8:48 am	SW 10th Ave & SW 9th St

### 16 OMS PM

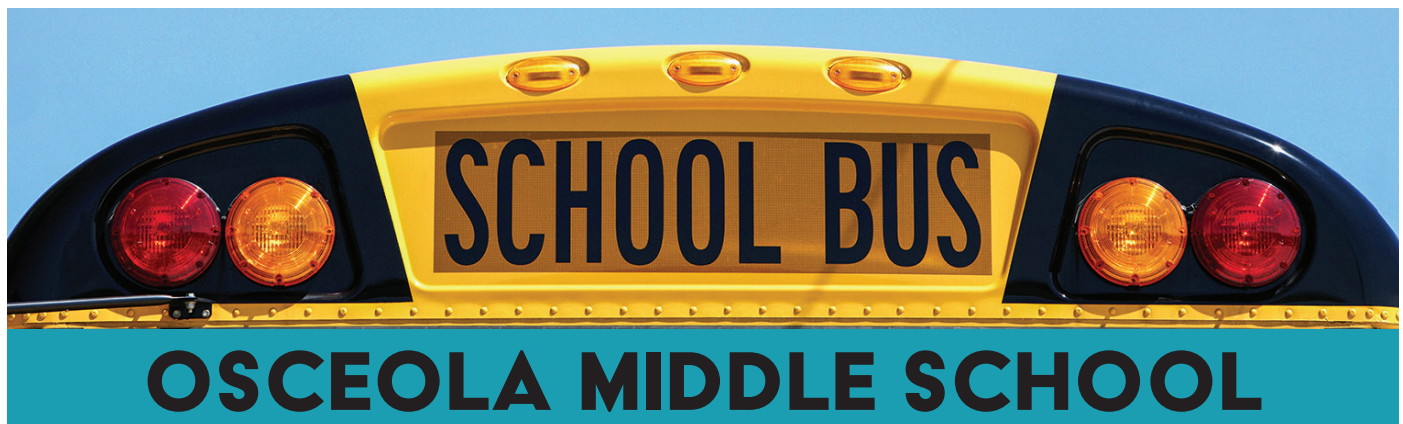
<u>TIME</u>	<u>LOCATION</u>
3:55 pm	SE 6th St & SE 37th Terr
3:56 pm	SE 8th St & SE 38th Ave
4:01 pm	70 E & NE 56th Ave
4:06 pm	2358 NE 96th Ave
4:10 pm	NE 96th Ave & Box 1044
4:17 pm	NE 103rd Ave & NE 28th Ln
4:19 pm	NE 103rd Ave & NE 23rd Ln
4:21 pm	NE 103rd Ave & NE 11th Ct
4:22 pm	NE 106th Ct & Yellow Dead End Sign
4:31 pm	NE 112th Ave & NE 32nd St
4:36 pm	NE 128th Ave & NE 25th St
4:38 pm	NE 128th Ave & Box 920
4:39 pm	SE 128th Ave & Box 800
4:43 pm	SE 34th St & SE 132nd Ave
4:48 pm	SE 138th Ave & SE 46th St

### 17 OMS PM

<u>TIME</u>	<u>LOCATION</u>
3:50 pm	SW 2nd Ave & SW 18th St
3:56 pm	SE 18th Ter & SE 30th St
3:57 pm	SE 29th St & Box 2302
3:59 pm	SE 27th Ave & SE 25th Dr
4:01 pm	SE 24th Blvd & SE 25th Dr
4:03 pm	SE 27th St & Box 2309
4:05 pm	SE 18th Ter & SE 34th Ln
4:07 pm	441 SE & SE 14th Ter
4:08 pm	441 SE & SHANNON'S OAKS (833)

### 18 OMS PM

<u>TIME</u>	<u>LOCATION</u>
3:46 pm	SW 10th Ave & SW 9th St
3:49 pm	SW 18th Ave & SW 2nd Way
3:59 pm	SW 21st Pkwy & SW 69th Ter
4:07 pm	SW 9th St & SW 85th Way
4:10 pm	SW 87th Ter & SW 5th Ln
4:11 pm	SW 2nd St & Box 8552
4:22 pm	SW 131st Ave & SW 16th Dr
4:33 pm	70 W & SW 77th Ter
4:33 pm	70 W & SW 72nd Ter



## BUS SCHEDULE

### 19 OMS AM

<u>TIME</u>	<u>LOCATION</u>
8:20 am	78 W & Box 7655
8:25 am	BHR Community Center
8:32 am	SW 53rd St & Box 1952
8:35 am	SW 39th Ln & SW 13th Ter

### 20 OMS AM

<u>TIME</u>	<u>LOCATION</u>
8:19 am	SW 15th St & SW 10th Ave
8:21 am	SW 16th St & SW 19th Ter
8:22 am	SW 16th St & SW 22nd Ter
8:24 am	SW 16th St & SW 28th Ave
8:26 am	SW 34th Ter & SW 17th St
8:27 am	SW 34th Ter & SW 22nd St
8:31 am	SW 24th Ave & Box 2654
8:33 am	SW 24th Ave & SW 33rd Cir
8:36 am	SW 28th St & Oak Lake Villas

### 25 OMS AM

<u>TIME</u>	<u>LOCATION</u>
8:27 am	SE 26th St & Box 4033
8:28 am	SE 34th Dr & SE 25th St
8:31 am	SE 43rd Ave & SE 27th St
8:31 am	SE 28th St & SE 44th Ave
8:32 am	SE 28th St & SE 39 Ave
8:33 am	SE 28th St & SE 35th Ave
8:35 am	SE 34th Ave & Box 3411
8:36 am	441 SE & SE 33rd Ter

### 19 OMS PM

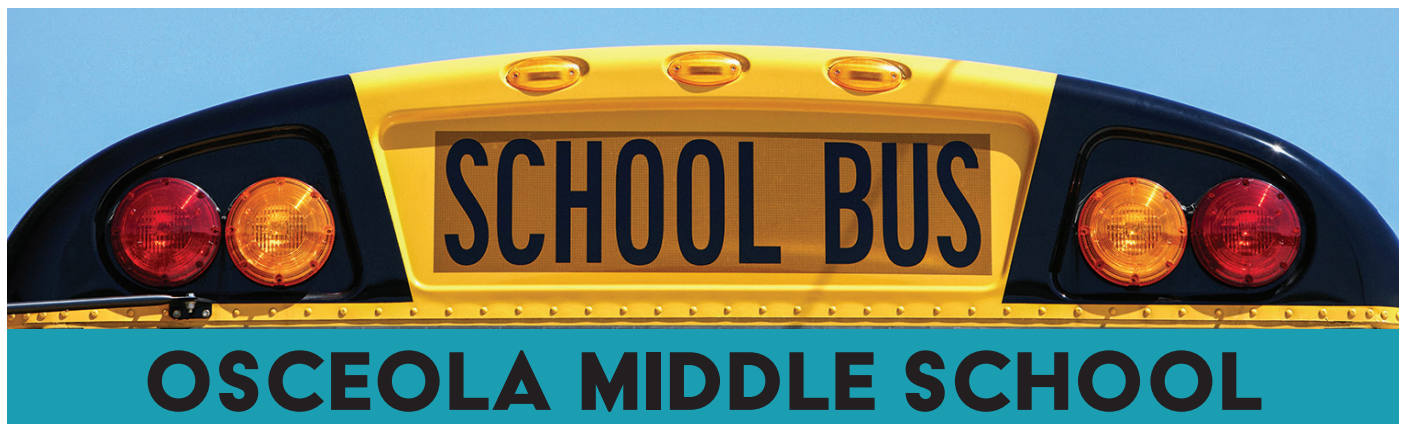
<u>TIME</u>	<u>LOCATION</u>
3:48 pm	SW 39th Ln & SW 13th Ter
3:52 pm	SW 53rd St & Box 1952
3:56 pm	78 W & Box 7655
4:05 pm	BHR Community Center

### 20 OMS PM

<u>TIME</u>	<u>LOCATION</u>
3:44 pm	SW 28th St & Oak Lake Villas
3:46 pm	SW 24th Ave & SW 33rd Cir
3:47 pm	SW 24th Ave & Box 2654
3:50 pm	SW 34th Ter & SW 22nd St
3:52 pm	SW 34th Ter & SW 17th St
3:53 pm	SW 16th St & SW 28th Ave
3:54 pm	SW 16th St & SW 22nd Ter
3:55 pm	SW 16th St & SW 19th Ter
3:56 pm	SW 15th St & SW 10th Ave

### 25 OMS PM

<u>TIME</u>	<u>LOCATION</u>
3:50 pm	441 SE & SE 33rd Ter
3:51 pm	SE 34th Ave & Box 3411
3:52 pm	SE 28th St & SE 35th Ave
3:54 pm	SE 28 St & SE 39 Ave
3:55 pm	SE 28th St & SE 44th Ave
3:55 pm	SE 43rd Ave & SE 27th St
3:58 pm	SE 34th Dr & SE 25th St
4:00 pm	SE 26th St & Box 4033



## BUS SCHEDULE

### 27 OMS AM

<u>TIME</u>	<u>LOCATION</u>
8:00 am	SE 87th Trl & SE 68th Dr
8:01 am	SE 67th Dr & SE 88th Trl
8:04 am	SE 57th Dr & SE 89th Ter
8:05 am	SE 57th Dr & SE 80th Trl
8:06 am	SE 60th Dr & SE 80th Trl
8:08 am	SE 60th Dr & SE 85th Ter
8:11 am	SE 57th Dr & SE 93rd Trl
8:12 am	SE 59th Dr & SE 91st Trl
8:18 am	SE 59th Blvd & Box 2985
8:19 am	SE 30th Pkwy & Box 5873
8:25 am	SE 40th Ave & Box 1183
8:28 am	SE 40th Ave & SE 22nd Ct

### 28 OMS AM

<u>TIME</u>	<u>LOCATION</u>
8:15 am	SE 16th Ave & SE 6th Ln
8:17 am	SE 14th Ave & SE 8th St
8:18 am	SE 13th Ave & SE 4th St
8:21 am	SE 9th Ave & Se 12th St
8:22 am	SE 15th Ct & SE 9th Ave
8:26 am	SE 21st St & SE 9th Ave
8:30 am	SE 10th St & SE 8th Ave
8:31 am	SE 8th Ave & SE 8th St
8:32 am	SE 8th Ave & SE 3rd St

### 31 OMS AM

<u>TIME</u>	<u>LOCATION</u>
8:12 am	NE 80th Ave & NE 16th St
8:14 am	NE 82nd Ave & NE 12th Ln
8:15 am	NE 80th Ave & NE 8th Dr
8:18 am	SE 80th Ave & Box 555
8:20 am	SE 68th Ave & SE 8th St
8:22 am	SE 60th Ave & Box 258
8:23 am	NE 60th Ave & NE 4th Ln
8:24 am	NE 60th Ave & NE 8th St
8:25 am	NE 60th Ave & NE 9th Way
8:26 am	NE 62nd Ave & NE 7th St
8:27 am	NE 62nd Ave & NE 4th St
8:32 am	70 E & NE 55th Trl

### 27 OMS PM

<u>TIME</u>	<u>LOCATION</u>
3:54 pm	SE 40th Ave & SE 22nd Ct
3:56 pm	SE 40th Ave & Box 1183
4:06 pm	SE 30th Pkwy & Box 5873
4:08 pm	SE 59th Blvd & Box 2985
4:16 pm	SE 57th Dr & SE 89th Ter
4:19 pm	SE 57th Dr & SE 80th Trl
4:20 pm	SE 60th Dr & SE 80th Trl
4:22 pm	SE 60th Dr & SE 85th Ter
4:25 pm	SE 57th Dr & SE 93rd Trl
4:26 pm	SE 59th Dr & SE 91st Trl
4:28 pm	SE 87th Trl & SE 68th Dr
4:29 pm	SE 67th Dr & SE 88th Trl

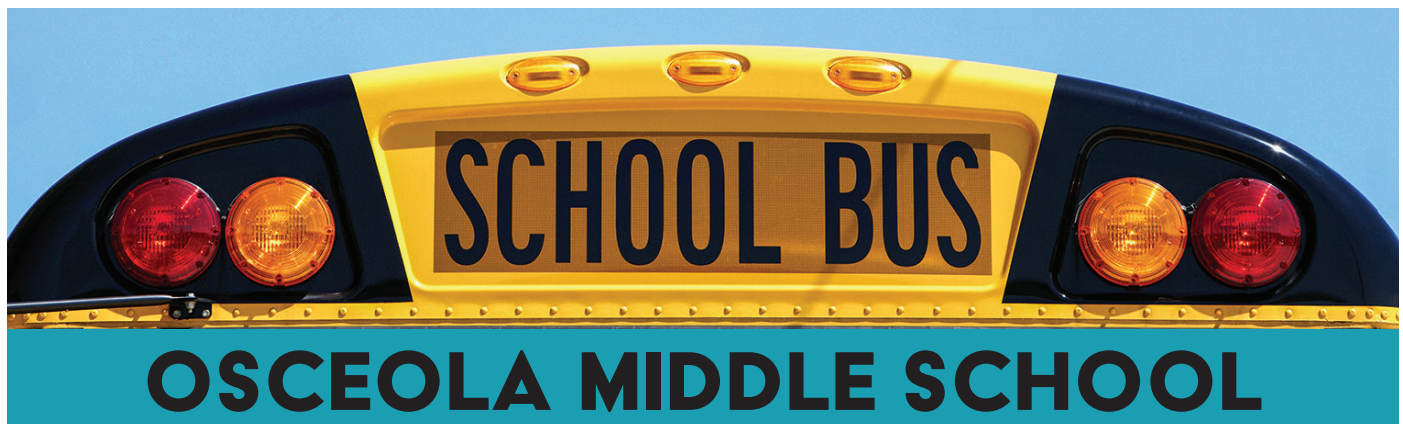
### 28 OMS PM

<u>TIME</u>	<u>LOCATION</u>
3:49 pm	SE 8th Ave & SE 3rd St
3:50 pm	SE 8th Ave & SE 8th St
3:51 pm	SE 10th St & SE 8th Ave
3:54 pm	SE 21st St & SE 9th Ave
3:56 pm	SE 15th Ct & SE 9th Ave
3:57 pm	SE 9th Ave & Se 12th St
4:00 pm	SE 13th Ave & SE 4th St
4:02 pm	SE 14th Ave & SE 8th St
4:03 pm	SE 16th Ave & SE 6th Ln

### 31 OMS PM

<u>TIME</u>	<u>LOCATION</u>
3:55 pm	NE 60th Ave & NE 9th Way
3:55 pm	NE 60th Ave & NE 8th St
3:56 pm	NE 60th Ave & NE 4th Ln
3:57 pm	NE 62nd Ave & NE 4th St
3:58 pm	NE 62nd Ave & NE 7th St
4:00 pm	SE 60TH AVE & Box 258
4:03 pm	SE 68th Ave & SE 8th St
4:06 pm	SE 80th Ave & Box 555
4:09 pm	NE 80th Ave & NE 8th Dr
4:10 pm	NE 82nd Ave & NE 12th Ln
4:12 pm	NE 80th Ave & NE 16th St





## BUS SCHEDULE

### 35 OMS AM

<u>TIME</u>	<u>LOCATION</u>
8:30 am	NW 32nd Ave & NW 2nd St
8:31 am	NW 1st St & NW 34th Ter
8:32 am	NW 38th Ter & Box 95
8:37 am	SW 11th Ave & SW 3rd St
8:38 am	SW 11th Ave & SW 6th St
8:39 am	SW 8th St & SW 13th Ave
8:40 am	SW 11th St & SW 13th Ave

### 36 OMS AM

<u>TIME</u>	<u>LOCATION</u>
8:26 am	NE 18TH TER & between NE 3rd & 4th St
8:29 am	NE 16th Ave & NE 8th St
8:30 am	NE 16th Ave & NE 12th St
8:31 am	NE 16th Ave & NE 14th St
8:32 am	NE 14th Ave & NE 10th St
8:33 am	NE 14th Ave & NE 6th St

### 42 OMS AM

<u>TIME</u>	<u>LOCATION</u>
8:16 am	70 E & NE 31st Ter
8:20 am	NE 64th Ave & NE 10th Ln
8:21 am	NE 64th Ave & NE 7th Ln
8:22 am	NE 64th Ave & NE 2nd St
8:23 am	SE 66th Ave & Center St
8:24 am	Center St E & 68th Ave
8:27 am	NE 70th Ave & NE 1st St
8:28 am	NE 70th Ave & NE 5th St
8:30 am	NE 70th Ave & NE 11th St

### 35 OMS PM

<u>TIME</u>	<u>LOCATION</u>
3:46 pm	SW 11th St & SW 13th Ave
3:48 pm	SW 8th St & SW 13th Ave
3:49 pm	SW 11th Ave & SW 6th St
3:50 pm	SW 11th Ave & SW 3rd St
3:52 pm	NW 32nd Ave & NW 2nd St
3:53 pm	NW 1st St & NW 34th Ter
3:54 pm	NW 38th Ter & Box 95

### 36 OMS PM

<u>TIME</u>	<u>LOCATION</u>
3:51 pm	NE 18TH TER & between NE 3rd & 4th St
3:52 pm	NE 16th Ave & NE 8th St
3:53 pm	NE 16th Ave & NE 12th St
3:54 pm	NE 16th Ave & NE 14th St
3:55 pm	NE 14th Ave & NE 10th St
3:56 pm	NE 14th Ave & NE 6th St

### 42 OMS PM

<u>TIME</u>	<u>LOCATION</u>
3:54 pm	70 E & NE 31st Ter
4:04 pm	NE 64th Ave & NE 10th Ln
4:05 pm	NE 64th Ave & NE 7th Ln
4:06 pm	NE 64th Ave & NE 2nd St
4:07 pm	SE 66th Ave & Center St
4:08 pm	Center St E & 68th Ave
4:10 pm	NE 70th Ave & NE 1st St
4:11 pm	NE 70th Ave & NE 5th St
4:13 pm	NE 70th Ave & NE 11th St



## Okeechobee Virtual School eager to build on last year's success

**W**elcome back, parents and students, to the 2021-2022 school year. I would like to thank you for your patience and understanding as we built and grew our virtual program in its inaugural year. Our faculty and staff are eager to build on our successes from last year and continue to refine our methods this school year. I am extremely proud of our 64 graduates who were able to navigate the challenges of the virtual setting and achieve their goals. Okeechobee Virtual School had a 96% graduation rate in its first year, and we plan to build on that success.

I am excited to announce that Okeechobee Virtual School is now operating as a Florida Virtual School

franchise. Through our partnership, we offer the rigorous and established K-12 FLVS curriculum with the personal touch of our highly qualified local instructors. Students may work from home while also enjoying aspects of the Okeechobee County school system such as sports, tutorial offerings, field trips, extracurricular activities, social gatherings, and the graduation ceremony.

As an FLVS franchise, Okeechobee Virtual School will be operating under new guidelines this school year and beyond. I strongly encourage you to attend our Open House on Wednesday, August 4th from 6:00-8:00 PM so we can share all of the requirements and benefits of being an OVS

student. Students will receive their devices and choose their elective courses, and our outstanding teachers will also enjoy the opportunity to meet their students face-to-face.

Thank you for being part of our Okeechobee Virtual School family, and I look forward to an amazing school year. Go Razorbacks!

Sincerely,  
**Bryan Van Camp**, Principal  
Okeechobee  
Virtual School



# Lake

## Okeechobee News

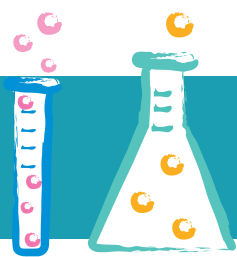
**WE'RE MOVING!**  
Our new address:  
313 NW 4th Ave  
Okeechobee, FL 34972

## SouthCentralFloridaLife.com

.....

*Weekly in Print: Lake Okeechobee News • Caloosa Belle*  
*Online Daily at SouthCentralFloridaLife.com:*  
*Okeechobee News • Clewiston News • Glades County News • Immokalee Bulletin*  
*Belle Glade & Pahokee Sun • Indiantown Independent*

**TO SUBSCRIBE, CALL 863.824.5933**



## Yearling Middle School excited for new, engaging activities

**A**s principal of Yearling Middle School, it is my pleasure to welcome you back for an exciting new school year. After the challenges of the past two years, the staff of YMS is excited to plan new engaging activities which will cause our students to think with their heads, feel with their hearts, and work with their hands. Our students' schedules will include Encore which will be a 45 minute period each day where students can practice their talents, explore new interests, and have more time to build academic skills. Encore as defined by Webster's Dictionary is a demand for repetition or reappearance made by an audience; a reappearance or additional performance demanded by an audience; a second achievement especially one that surpasses the first. It is time for our students to feel the pride, excitement and sense of accomplishment through Encore.

I hope you find our school website helpful and informative. Here you will find a calendar of events which is updated weekly, a list of our faculty and staff with their email address for

easy communication, and information on athletics, the student handbook and more. A weekly newsletter will be emailed to parents and a copy will be uploaded to the school website under the "News" tab. Additionally, you can find updates and quick announcements on our Facebook page @ YearlingMiddle.

We cannot do what we do without you. Each year we strive to strengthen our home/school partnership and I encourage you to set a goal to become more engaged in our Yearling Middle School community. You can join our school advisory council, volunteer to help with a school event, club, athletic team, band, or join a virtual Chat with Dr. Pat each month. We are so fortunate to have a wonderful parent community and your support makes all the difference. Thank you for your commitment to making Yearling Middle an amazing place for students to grow and learn.

The YMS office staff is back to work and ready to answer any questions you may have, and help with registration for new students. Please call our office at (863) 462 5056.

Open house is Thursday, August 5 from 6-8pm. Sixth grade orientation will be held in the gym. Families can choose to attend the 6:15pm or 7:15pm session. Students and parents will be able to access class schedules Thursday morning using your Skyward Student or Skyward Family Access accounts. If you don't have a Family Access account, please give our office a call for assistance.

If you do not have an email address in Skyward Family Access, there are two ways to add one. You can call our office and we will add your email to your students' registration information or you can login to your Skyward Family Access Account and make this change after August 5.

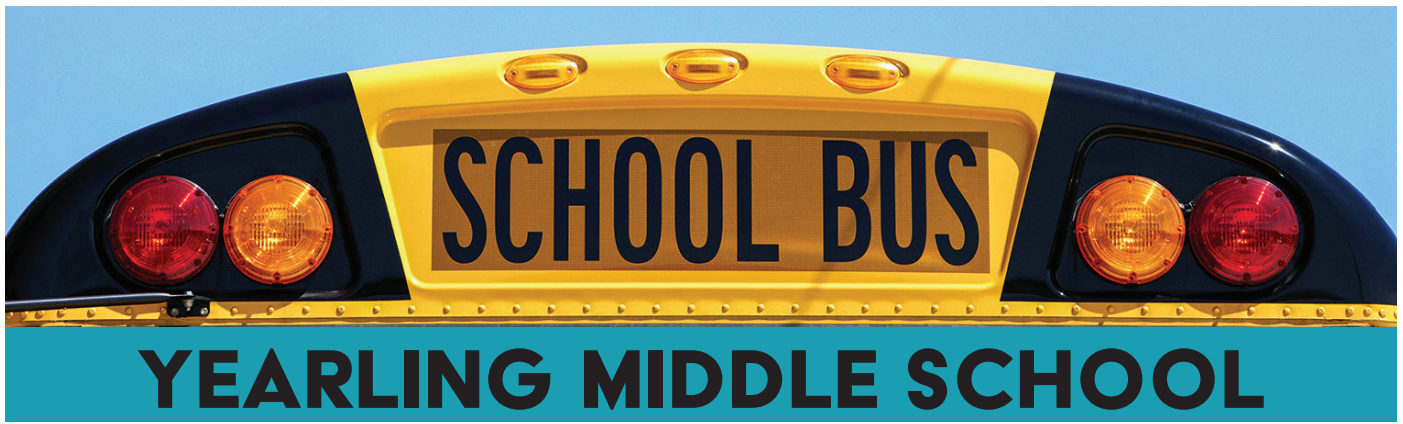
Please let me know any way I can serve your families' educational needs in the coming school year, and welcome back!

With great anticipation,

**Dr. Pat  
McCoy,**  
Principal







## BUS SCHEDULE

### 02 YMS AM

<u>TIME</u>	<u>LOCATION</u>
7:52 am	70 W & NW 141st Ave
7:57 am	Broadland Ln & Kelton Ter
7:58 am	Broadland Ln & Jordan Ter
8:04 am	SW Rucks Dairy Rd & Box 2527
8:17 am	NW 128th Ave & Box 3057
8:31 am	NW 149th Ter & NW 63rd Ln
8:46 am	NW 28th Ave & NW 4th St
8:47 am	NW 26th Ave & NW 6th St

### 02 YMS PM

<u>TIME</u>	<u>LOCATION</u>
3:46 pm	NW 26th Ave & NW 6th St
3:47 pm	NW 28th Ave & NW 4th St
3:59 pm	NW 128th Ave & Box 3057
4:07 pm	NW 149th Ter & NW 63rd Ln
4:19 pm	70 W & NW 141st Ave
4:23 pm	Broadland Ln & Kelton Ter
4:24 pm	Broadland Ln & Jordan Ter
4:28 pm	SW Rucks Dairy Rd & Box 2527

### 06 YMS AM

<u>TIME</u>	<u>LOCATION</u>
8:25 am	NW 22nd Ave & NW 4th St
8:30 am	NW 18th St & NW 36th Ter
8:31 am	NW 18th St & NW 38th Ave
8:32 am	NW 18th St & NW 42nd Ave
8:34 am	NW 18th St & NW 44th Ave
8:36 am	NW 18th St & NW 45th Ter

### 06 YMS PM

<u>TIME</u>	<u>LOCATION</u>
3:49 pm	NW 18th St & NW 45th Ter
3:50 pm	NW 18th St & NW 44th Ave
3:50 pm	NW 18th St & NW 42nd Ave
3:51 pm	NW 18th St & NW 38th Ave
3:52 pm	NW 18th St & NW 36th Ter
3:57 pm	NW 22nd Ave & NW 4th St

### 10 YMS AM

<u>TIME</u>	<u>LOCATION</u>
8:21 am	441 N & NE 96th St
8:24 am	NW 115th Dr & NW 2nd Ter
8:25 am	NE 115th Dr & NW 2nd Ave
8:28 am	NE 110th St & NE 1st Way
8:30 am	NW 110th St & NW 8th Ave
8:31 am	NW 106th St & NW 8th Ave
8:32 am	NW 102nd St & NW 8th Ave
8:33 am	NE 102nd St & Center Ave
8:34 am	NW 98th St & N Center Ave
8:42 am	NW 36th St & NW 10th Ave

### 10 YMS PM

<u>TIME</u>	<u>LOCATION</u>
3:49 pm	NW 36th St & NW 10th Ave
3:55 pm	441 N & NE 96th St
3:58 pm	NW 115th Dr & NW 2nd Ter
3:59 pm	NE 115th Dr & NW 2nd Ave
4:02 pm	NE 110th St & NE 1st Way
4:03 pm	NW 110th St & NW 8th Ave
4:04 pm	NW 106th St & NW 8th Ave
4:05 pm	NW 102nd St & NW 8th Ave
4:07 pm	NE 102nd St & Center Ave
4:08 pm	NW 98th St & N Center Ave

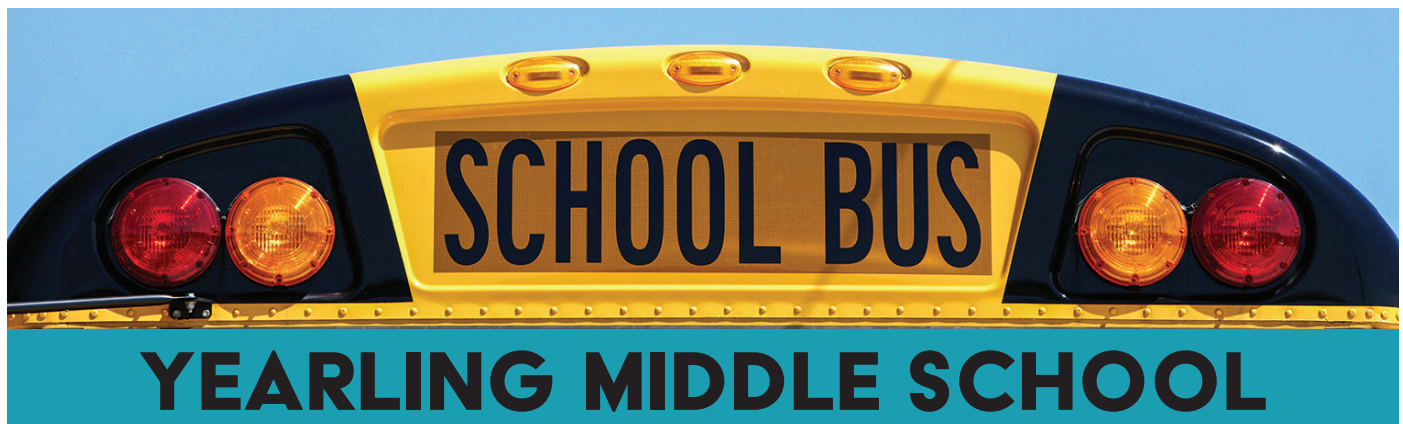
### 14 YMS AM

<u>TIME</u>	<u>LOCATION</u>
8:15 am	NW 46th Ave & Villas
8:17 am	NW 30th St & NW 47th Ave
8:19 am	NW 30th St & Box 6642
8:21 am	NW 30th St & Box 7275
8:26 am	NW 24th St & Box 5700
8:27 am	NW 24th St & NW 63rd Ter
8:31 am	NW 50th Ave & NW 27th St

### 14 YMS PM

<u>TIME</u>	<u>LOCATION</u>
3:49 pm	NW 46th Ave & Villas
3:50 pm	NW 30th St & NW 47th Ave
3:53 pm	NW 30th St & Box 6642
3:55 pm	NW 30th St & Box 7275
4:00 pm	NW 24th St & Box 5700
4:01 pm	NW 24th St & NW 63rd Ter
4:04 pm	NW 50th Ave & NW 27th St





## BUS SCHEDULE

### 15 YMS AM

<u>TIME</u>	<u>LOCATION</u>
8:01 am	NE 128th Ave & Faith Farm
8:03 am	NE 128th Ave & NE 101st St
8:07 am	NE 120th St & NE 124th Ave
8:09 am	NE 120th St & NE 115th Terr
8:11 am	NE 120th St & Box 10593
8:15 am	NE 120th St & NE 104th Ave
8:17 am	NE 120th St & Box 7480
8:19 am	NE 120th St & Box 6800
8:22 am	NE 120th St & Box 6175
8:27 am	NE 138th St & NE 18th Ave
8:29 am	NE 144th St & Box 2050
8:31 am	NE 131st Ln & NE 22nd Ave
8:41 am	NW 36th St & NW 4th Ave
8:41 am	NW 36th St & NW 8th Ave

### 15 YMS PM

<u>TIME</u>	<u>LOCATION</u>
3:44 pm	NW 36th St & NW 8th Ave
3:45 pm	NW 36th St & NW 4th Ave
3:55 pm	NE 131st Ln & NE 22nd Ave
3:58 pm	NE 138th St & NE 18th Ave
4:00 pm	NE 144th St & Box 2050
4:09 pm	NE 120th St & Box 6175
4:11 pm	NE 120th St & Box 6800
4:11 pm	NE 120th St & Box 7480
4:14 pm	NE 120th St & NE 104th Ave
4:15 pm	NE 120th St & Box 10593
4:16 pm	NE 120th St & NE 115th Terr
4:17 pm	NE 120th St & NE 124th Ave
4:20 pm	NE 128th Ave & NE 101st St
4:22 pm	NE 128th Ave & Faith Farm

### 21 YMS AM

<u>TIME</u>	<u>LOCATION</u>
8:22 am	NE 40th Ave & NE 9th Ln
8:24 am	NE 32nd Ave & NE 8th St
8:25 am	NE 11th Ln & NE 29th Ter
8:26 am	NE 28th Ave & NE 8th St
8:31 am	70 E & River Run
8:34 am	NE 6th St & NE 4th Ave
8:37 am	441 N & NE 11th St
8:39 am	NW 11th St & NW 3rd Ave
8:40 am	NW 9th St & Box 420

### 21 YMS PM

<u>TIME</u>	<u>LOCATION</u>
3:44 pm	NW 9th St & Box 420
3:45 pm	441 N & NE 11th St
3:47 pm	NW 11th St & NW 3rd Ave
3:59 pm	NE 40th Ave & NE 9th Ln
4:01 pm	NE 32nd Ave & NE 8th St
4:03 pm	NE 11th Ln & NE 29th Ter
4:04 pm	NE 28th Ave & NE 8th St
4:09 pm	70 E & River Run
4:11 pm	NE 6th St & NE 4th Ave

### 24 YMS AM

<u>TIME</u>	<u>LOCATION</u>
8:12 am	NE 168th St & Fire Station
8:17 am	NW 160th St & NW 12th Ter
8:22 am	NW 32nd Ave & NW 175th Ct
8:25 am	NW 160th St & Box 3253
8:27 am	NW 38th Ave & NW 167th Ct
8:31 am	NW 160th St & Box 5065
8:35 am	NW 144th Dr & NW 34th Ter
8:38 am	NW 144th Dr & NW 9th Ave

### 24 YMS PM

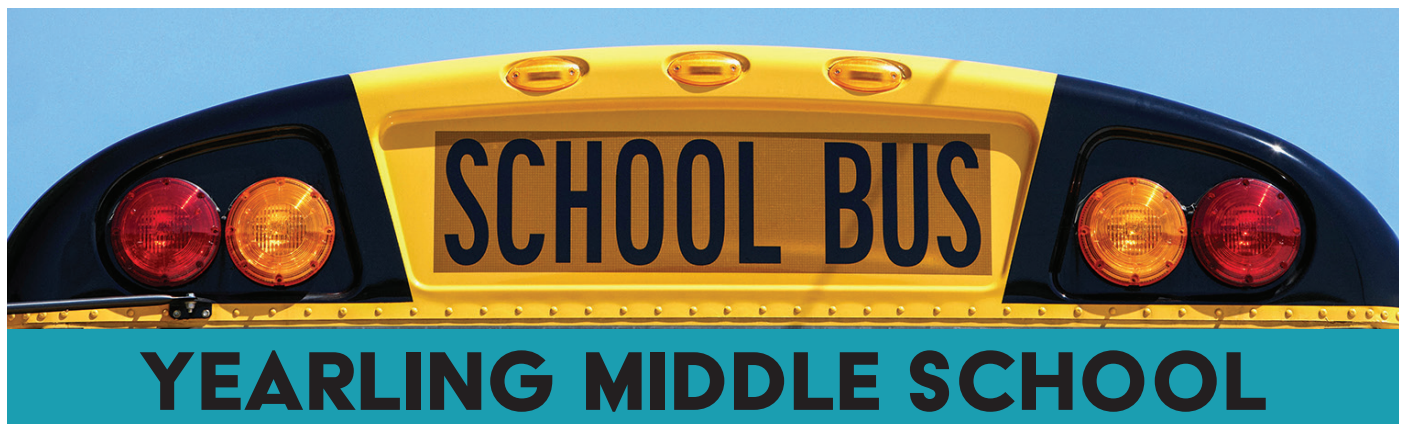
<u>TIME</u>	<u>LOCATION</u>
3:58 pm	NE 168th St & Fire Station
4:02 pm	NW 160th St & NW 12th Ter
4:09 pm	NW 32nd Ave & NW 175th Ct
4:13 pm	NW 160th St & Box 3253
4:16 pm	NW 38th Ave & NW 167th Ct
4:20 pm	NW 160th St & Box 5065
4:24 pm	NW 144th Dr & NW 34th Ter
4:29 pm	NW 144th Dr & NW 9th Ave

### 26 YMS AM

<u>TIME</u>	<u>LOCATION</u>
8:03 am	NW 144th Ave & NW 304th St
8:04 am	NW 144th Ave & NW 288th St
8:06 am	NW 144th Ave & NW 272nd St
8:07 am	NW 144th Ave & NW 256th St
8:09 am	NW 144th Ave & NW 248th St
8:17 am	NW 240th St & Box 5252
8:26 am	441 N & Mac 4 (208)
8:28 am	441 N & Mac 2 (17000)
8:33 am	441 N & Oak Leaf
8:35 am	441 N & Box 12600

### 26 YMS PM

<u>TIME</u>	<u>LOCATION</u>
3:49 pm	441 N & Box 12600
3:50 pm	441 N & Oak Leaf
3:53 pm	441 N & Mac 2 (17000)
3:54 pm	441 N & Mac 4 (208)
4:09 pm	NW 240th St & Box 5252
4:25 pm	NW 144th Ave & NW 248th St
4:27 pm	NW 144th Ave & NW 256th St
4:31 pm	NW 144th Ave & NW 272nd St
4:34 pm	NW 144th Ave & NW 288th St
4:38 pm	NW 144th Ave & NW 304th St



## BUS SCHEDULE

### 29 YMS AM

<u>TIME</u>	<u>LOCATION</u>
8:01 am	NW 192nd Ave & NW 320th St
8:03 am	NW 192nd Ave & NW 304th St
8:05 am	NW 192nd Ave & NW 288th St
8:07 am	NW 192nd Ave & NW 280th St
8:09 am	NW 192nd Ave & NW 272nd St
8:11 am	NW 192nd Ave & NW 256th St
8:13 am	NW 192nd Ave & NW 248th St
8:18 am	700 A Store & NW 176th Ave
8:20 am	NW 176th Ave & NW 208th St
8:22 am	NW 176th Ave & NW 203rd St
8:24 am	NW 176th Ave & NW 184th Dr
8:26 am	NW 176th Ave & Box 16500
8:41 am	NW 36th St & NW 40th Dr
8:43 am	NW 36th St & NW 38th Ave

### 32 YMS AM

<u>TIME</u>	<u>LOCATION</u>
8:29 am	SW 2nd Ave & County Office
8:34 am	NW 2nd Ave & NW 6th St
8:37 am	NW 11th Ave & NW 3rd St
8:40 am	70 W & Box 1659
8:43 am	NW 18th Ave & NW 6th St
8:45 am	NW 9th Ave & NW 7th St

### 33 YMS AM

<u>TIME</u>	<u>LOCATION</u>
7:51 am	441 N & NE 308th St
7:53 am	441 N & NE 312th Ln
7:55 am	441 N & NE 9th Ave
7:58 am	NE 342nd Trl & NE 4th Dr
8:00 am	NE 342nd Trl & NE 356th Ct
8:02 am	NE 342nd Trl & NE 361st Ct
8:04 am	NE 366th Trl & NE 9th Dr
8:11 am	NW 392nd St & NW 24th Dr
8:18 am	NW 344th St & NW 25th Ave
8:20 am	NW 344th St & NW 21st Ave
8:33 am	441 N & NE 207th St (McArthur 3)
8:35 am	441 N & McArthur 1 (18112)

### 29 YMS PM

<u>TIME</u>	<u>LOCATION</u>
3:48 pm	NW 36th St & NW 38th Ave
3:49 pm	NW 36th St & NW 40th Dr
4:04 pm	NW 176th Ave & Box 16500
4:08 pm	NW 176th Ave & NW 184th Dr
4:11 pm	NW 176th Ave & NW 203rd St
4:12 pm	NW 176th Ave & NW 208th St
4:14 pm	700 A Store & NW 176th Ave
4:22 pm	NW 192nd Ave & NW 248th St
4:24 pm	NW 192nd Ave & NW 256th St
4:27 pm	NW 192nd Ave & NW 272nd St
4:29 pm	NW 192nd Ave & NW 280th St
4:31 pm	NW 192nd Ave & NW 288th St
4:33 pm	NW 192nd Ave & NW 304th St
4:36 pm	NW 192nd Ave & NW 320th St

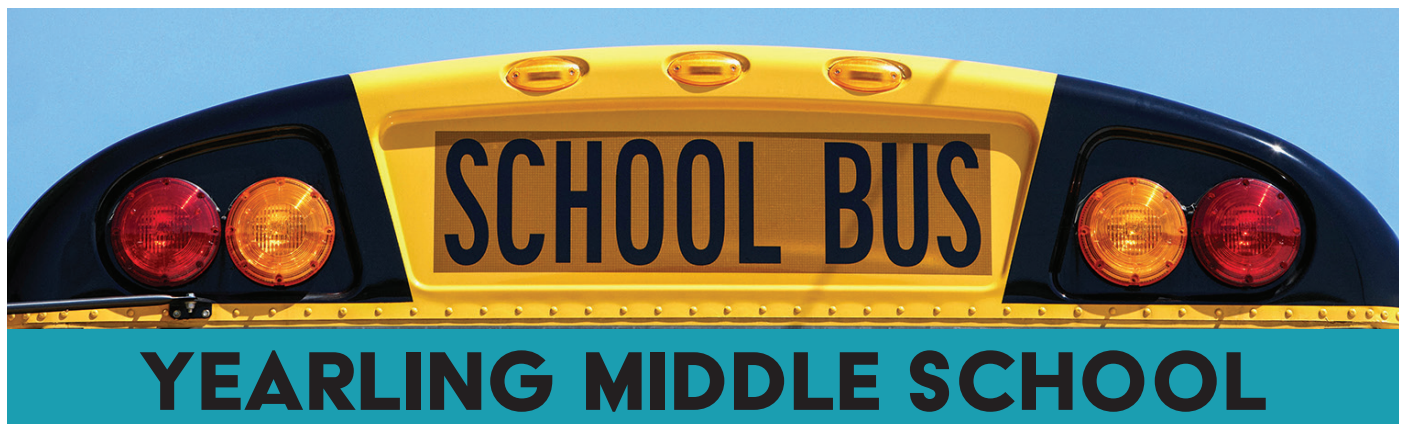
### 32 YMS PM

<u>TIME</u>	<u>LOCATION</u>
3:46 pm	NW 9th Ave & NW 7th St
3:49 pm	70 W & Box 1659
3:51 pm	NW 18th Ave & NW 6th St
3:52 pm	NW 11th Ave & NW 3rd St
3:56 pm	NW 2nd Ave & NW 6th St
3:58 pm	SW 2nd Ave & County Office (700)

### 33 YMS PM

<u>TIME</u>	<u>LOCATION</u>
3:53 pm	441 N & McArthur 1 (18112)
3:55 pm	441 N & NE 207th St (McArthur 3)
4:02 pm	441 N & NE 308th St
4:03 pm	441 N & NE 312th Ln
4:04 pm	441 N & NE 9th Ave
4:10 pm	NW 366th Trl & Box 110
4:11 pm	NE 366th Trl & NE 9th Dr
4:13 pm	NE 342nd Trl & NE 361st Ct
4:15 pm	NE 342nd Trl & NE 356th Ct
4:18 pm	NE 342nd Trl & NE 4th Dr
4:24 pm	NW 392nd St & NW 24th Dr
4:34 pm	NW 344th St & NW 25th Ave
4:35 pm	NW 344th St & NW 21st Ave





## BUS SCHEDULE

### 39 YMS AM

<u>TIME</u>	<u>LOCATION</u>
8:24 am	NE 54th Trl & NE 50th Ct
8:26 am	NE 52nd Dr & NE 54th Trl
8:28 am	NE 54th Trl & NE 56th Pkwy
8:29 am	NE 59th Ct & NE 54th Way
8:39 am	NW 32nd St & NW 34th Ave
8:41 am	NW 36th St & NW 28th Ave

### 39 YMS PM

<u>TIME</u>	<u>LOCATION</u>
3:49 pm	NW 36th St & NW 28th Ave
3:51 pm	NW 32nd St & NW 34th Ave
4:03 pm	NE 59th Ct & NE 54th Way
4:06 pm	NE 54th Trl & NE 56th Pkwy
4:07 pm	NE 52nd Dr & NE 54th Trl
4:09 pm	NE 54th Trl & NE 50th C

### 40 YMS AM

<u>TIME</u>	<u>LOCATION</u>
8:26 am	98 N & Milking R
8:28 am	98 N & NW 67th Ln
8:30 am	NW 80th Ave & NW 82nd Ct
8:31 am	NW 80th Ave & NW 86th Ct
8:33 am	NW 80th Ave & NW 92nd Ct
8:34 am	NW 80th Ave & NW 96th Ct
8:43 am	NW 36th St & NW 33rd Ave

### 40 YMS PM

<u>TIME</u>	<u>LOCATION</u>
3:47 pm	NW 36th St & NW 33rd Ave
3:52 pm	98 N & Milking R
3:53 pm	98 N & NW 67th Ln
3:55 pm	NW 80th Ave & NW 82nd Ct
3:56 pm	NW 80th Ave & NW 86th Ct
3:58 pm	NW 80th Ave & NW 92nd Ct
3:59 pm	NW 80th Ave & NW 96th Ct

### 41 YMS AM

<u>TIME</u>	<u>LOCATION</u>
8:04 am	NW 160th Dr & NW 214th Cir
8:07 am	98 N & NW 203rd Ave
8:09 am	98 N & Camp Grace
8:19 am	NW 144th Trl & Box 8650
8:20 am	NW 144th Trl & NW 96th St
8:35 am	98 N & Larson Dairy
8:38 am	NW 36th St & NW 23rd Ave
8:39 am	NW 36th St & NW 18th Ave

### 41 YMS PM

<u>TIME</u>	<u>LOCATION</u>
3:45 pm	NW 36th St & NW 18th Ave
3:46 pm	NW 36th St & NW 23rd Ave
3:50 pm	98 N & Larson Dairy
4:13 pm	NW 144th Trl & NW 96th St
4:16 pm	NW 144th Trl & Box 8650
4:37 pm	98 N & NW 203rd Ave
4:43 pm	NW 160th Dr & NW 214th Cir
4:50 pm	98 N & Camp Grace

### 50 YMS AM

<u>TIME</u>	<u>LOCATION</u>
8:02 am	NE 224th St & NE 45th Ter (Larson 3)
8:04 am	NE 224th St & NE 48th Ave
8:07 am	NE 224th St & Box 5620
8:14 am	NE 48th Ave & Box 28630
8:17 am	NE 304th St & NE 55th Ave
8:19 am	NE 304th St & NE 65th Ter
8:22 am	NE 304th St & Box 4815
8:24 am	NE 301st Blvd & Box 3255
8:25 am	NE 304th St & NE 23rd Way

### 50 YMS PM

<u>TIME</u>	<u>LOCATION</u>
3:57 pm	NE 224th St & NE 45th Ter (Larson 3)
3:58 pm	NE 224th St & NE 48th Ave
3:59 pm	NE 224th St & Box 5620
4:06 pm	NE 48th Ave & Box 28630
4:08 pm	NE 304th St & NE 55th Ave
4:10 pm	NE 304th St & NE 65th Ter
4:13 pm	NE 304th St & Box 4815
4:17 pm	NE 301st Blvd & Box 3255
4:18 pm	NE 304th St & NE 23rd Way

### 52 YMS AM

<u>TIME</u>	<u>LOCATION</u>
8:01 am	70 E & Gracewood Service Rd
8:07 am	NE 122nd Dr & Box 5107
8:13 am	NE 80th Ave & NE 37th St
8:18 am	70 E & NE 71st Ave
8:20 am	70 E & NE 64th Dr
8:22 am	70 E & NE 55th Trl

### 52 YMS PM

<u>TIME</u>	<u>LOCATION</u>
4:20 pm	70 E & Gracewood Service Rd
4:24 pm	NE 122nd Dr & Box 5107
4:32 pm	NE 80th Ave & NE 37th St
4:37 pm	70 E & NE 71st Ave
4:37 pm	70 E & NE 64th Dr
4:39 pm	70 E & NE 55th Trl

# "Caring Beyond Prescription"

## Heartland Discount Pharmacy

*Full Service Retail Pharmacy*

**WE PROMISE TO PROVIDE QUALITY  
SERVICE AT LOWEST PRICES**

*Your Neighborhood Pharmacy Where Customer Service &  
Personal Attention are Our #1 Priorities*



Get to know  
your neighbor.

**It's time to change  
your pharmacy**



### PHARMACY THE WAY IT'S SUPPOSED TO BE

- ◆ **Best cash price in town**
- ◆ FREE same day home delivery
- ◆ We help patients not to fall into Medicare coverage gap or donut hole
- ◆ We match all Competitors' Generic Prescription Drug Programs
- ◆ We Accept All Insurances including Medicaid, Medicare, Part D and Worker's Compensation
- ◆ Flu and Pneumonia shots available
- ◆ Now providing non-sterile RX Compounding



#### Heartland Discount Pharmacy

407 S Parrott Ave, Okeechobee, FL 34974 Phone: (863) 763-7633 Fax: (863) 763-7666  
[www.heartlanddiscountpharmacy.com](http://www.heartlanddiscountpharmacy.com)

**Get your Covid-19 Vaccine Today**

Scan QR code from your phone camera or  
visit our website for appointment

**Walk-Ins Welcome**

**Pfizer** (2 doses) **For 12 Years & Older** →



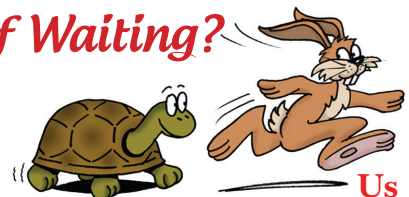
← **Moderna** (2 doses) **For 18 Years & Older**

**Janseen** (J&J) (1 dose) →



**Tired of Waiting?**

Other  
Pharmacies



**863.763.7633**  
**407 S. Parrott Ave • Okeechobee**  
**Next to Arby's on 441**

**EXTENDED HOURS:**

Monday-Friday 8am - 8pm • Sat. 9am - 5pm

